

**NEW**

**WATER FLOW CHECKERS**

# FLOW METER (WITH THERMOMETER AND PRESSURE GAUGE)



**M** Material

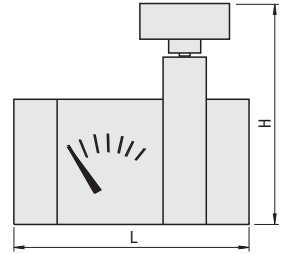
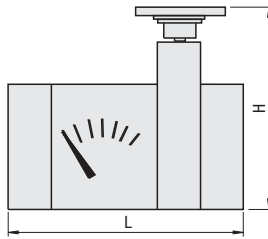
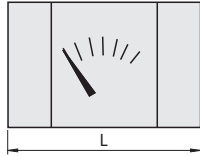
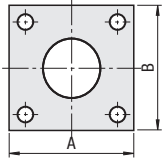
- Frame : Brass
- Housing : Polysulfone
- Blade : Glass-filled nylon
- Spring : Stainless steel
- O-ring : EPDM (ethylene/propylene/diene monomer)
- Cap bolt : Stainless steel

Operating temperature (water) (°C) 115 or less  
 Maximum pressure (MPa) 0.98  
 Tolerance (%) ±10  
 Thermometer range (°C) -10~115  
 Pressure gauge range (kgf/cm<sup>2</sup>) 15

Flow meter only  
**M-F3A□0L**  
**M-F4A□0L**

Flow meter and thermometer  
**M-F3B□0L**  
**M-F4B□0L**

Flow meter and pressure gauge  
**M-F3C□0L**  
**M-F4C□0L**



■ Flow meter only

Screw dimensions	A	B	L	Flow rate (ℓ/min)	Part Number	Unit Price 1 pc
3/8	39	39	62	10	<b>M-F3A10L</b>	<b>Quotation</b>
				30	<b>M-F3A30L</b>	
1/2				10	<b>M-F4A10L</b>	
				30	<b>M-F4A30L</b>	

■ Flow meter and thermometer

Screw dimensions	A	B	L	H	Flow rate (ℓ/min)	Part Number	Unit Price 1 pc
3/8	39	39	74.5	72	10	<b>M-F3B10L</b>	<b>Quotation</b>
					30	<b>M-F3B30L</b>	
1/2					10	<b>M-F4B10L</b>	
					30	<b>M-F4B30L</b>	

■ Flow meter and pressure gauge

Screw dimensions	A	B	L	H	Flow rate (ℓ/min)	Part Number	Unit Price 1 pc
3/8	39	39	74.5	87	10	<b>M-F3C10L</b>	<b>Quotation</b>
					30	<b>M-F3C30L</b>	
1/2					10	<b>M-F4C10L</b>	
					30	<b>M-F4C30L</b>	



Order

Part Number

**M-F3A10L**



Days to Ship

**Quotation**



Price

**Quotation**

COMPONENTS FOR MOLD COOLING AND TEMPERATURE CONTROLLING SYSTEMS