

# WAX FOR SCREW MAINTENANCE / COPPER GAUZE

■Application Improve effectiveness when removing caked resin from the screw during the screw cleaning process.

■WAX FOR SCREW MAINTENANCE  
M-HGMX



■Specifications

- Used to remove caked resin from the screw.
- Large equipment or device is not necessary.
- One piece of M-HGMX can be used to clean φ20 screw approximately 20 times.

| Size (mm) | Part Number | Unit Price  |
|-----------|-------------|-------------|
|           |             | 1~10 Pieces |
| 40×60×20  | M-HGMX      | Quotation   |

Ⓜ Please check with our WOS for the purchase order that exceeds the displayed quantity.



Order

Part Number  
M-HGMX



Days to Ship

Quotation



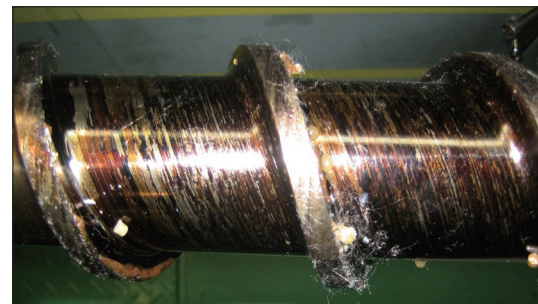
Example



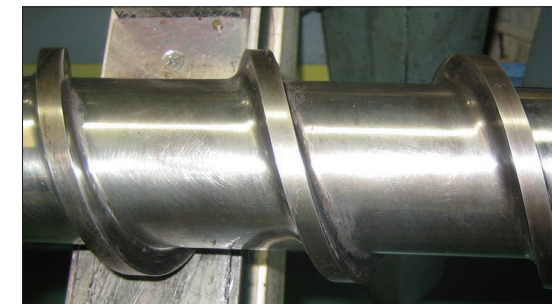
■How to use

- ① Prepare the screw which was previously removed from the molding machine.
- ② Use brush to clean resins off the screw.
- ③ Apply appropriate amount of M-HGMX on caked resin which cannot be cleaned with brush  
※ M-HGMX will melt immediately when applied to the screw with high temperature, increasing cleaning efficiency.
- ④ Remove caked resin by using polishing tool such as M-RCG Copper Gauze to rub on the area applied by M-HGMX.
- ⑤ Repeat ③~④ until the caked resin is removed.
- ⑥ After cleaning, wipe off any leftover resin on the screw with dry cloth.

■Example of Wax for Screw Maintenance Effectiveness (M-HGMX)



Before



After

After using Wax for Screw Maintenance (M-HGMX), you can notice that the caked resin was removed.

■Notes on handling

- Cannot be used with the screw that is completely cooled off.
- Since this is an operation when the screw is in high temperature, please wear equipment such as Gloves for Injection to prevent getting burned.

■Application Used to accommodate the removal of caked resin from the screw.

■Copper Gauze (for Screw Maintenance)  
M-RCG



Ⓜ Material: Copper

■Specifications

- Gauze made from copper mesh, reducing the risk of damaging the molding machine screw or cylinder to minimum.
- Available in 4 types of length.

| Width (cm) | Part Number |            | Unit Price |
|------------|-------------|------------|------------|
|            | Type        | Length (m) | 1~5 Rolls  |
| 13         | M-RCG       | 2          | Quotation  |
|            |             | 5          |            |
|            |             | 10         |            |
|            |             | 30         |            |

Ⓜ Please check with our WOS for the purchase order that exceeds the displayed quantity.



Order

Part Number  
M-RCG-5



Days to Ship

Quotation



Example



■Features

- Copper Gauze can be wrapped around the screw in a larger contact area, comparing to brush, resulting in more effectiveness. Furthermore, the Copper Gauze can be used during the polishing process, after applying Wax for Screw Maintenance (M-HGMX), to ensure that the Wax is applied thoroughly.

■How to use

- ① Wrap the gauze around the screw where resins cake up, then polish it.
- ② Used in 2 or 3 folds to increase the efficiency.