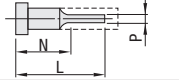


# STEPPED EJECTOR PINS WITH ENGRAVING

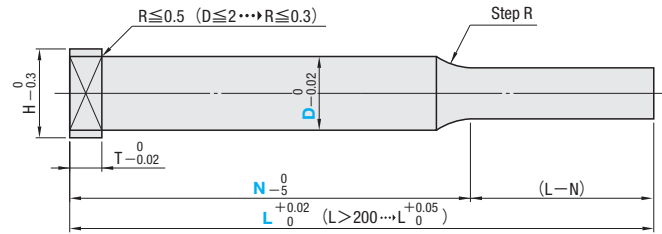
— L · P · N DIMENSION DESIGNATION TYPE —

L · N · P dimension designation type

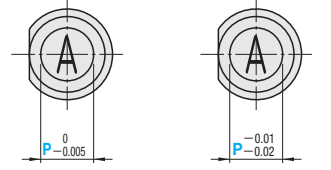


Ⓜ Non JIS material definition is listed on P.1351 - 1352

Part Number		Head	P
Type	Character	Thickness	
EHSF	□M	4mm(T4)	0 -0.005
EHSJF		6 · 8mm(JIS)	
EHSFE	□MR	4mm(T4)	-0.01 -0.02
EHSJFE		6 · 8mm(JIS)	



EHSF□M · EHSF□MR    EHSFE□M · EHSFE□MR  
EHSJF□M · EHSJF□MR    EHSJFE□M · EHSJFE□MR



※ Range of guaranteed shaft diameter precision (D) (Details P.1301)  
※ Step R (Details P.1302)

□ SKH51 equivalent  
Ⓜ 58~60HRC  
Range of guaranteed base material hardness (Details P.1303)

Ⓜ To determine the engraving position, key flat cutting is made at the standard 0°.

1M · 1MR (1 character)	2M · 2MR (2 characters)	3M (3 characters)	4M (4 characters)	5M (5 characters)
0.30 ≤ P ≤ 11.90	1.50 ≤ P ≤ 11.90	2.80 ≤ P ≤ 11.90	3.60 ≤ P ≤ 11.90	4.50 ≤ P ≤ 11.90

Ⓜ Please place order by the character order of molding products. Ⓜ Refer to P.118 for character font.

4mm head JIS head		Part Number		0.01mm increments		1mm increments		Characters for engraving (Round Gothic type)					
H	T	Type	Character	D	L	P	N						
3	4	EHSF (P - 0.005)	1M	40.00~250.00 (50.00)	40.00~100.00	0.30 ~ 0.90	N ≥ 15 and 15 ≤ (L - N) ≤ 100	0 1 2 3 4					
								5 6 7 8 9					
								A B C D E					
								F G H I J					
								P Q R S T					
								U V W X Y					
		Z											
		EHSFE (P - 0.01)	2MR					40.00~250.00 (50.00)	40.00~100.00	0.30 ~ 0.90	N ≥ 15 and 15 ≤ (L - N) ≤ 150	· N ≥ 15 (T4)  · N ≥ 30 (JIS)  and 20 ≤ (L - N) ≤ 200	Name
													Slash /
													Greater >
													Less <
													Plus +
Minus -													
Space													
Centered dot ·													
Period .													

- Ⓜ Use / for indicating (slash), # for (-minus), % for (space), @ for + (centered dot), and & for (period).
- Ⓜ The figure in ( ) for L dimension are applicable for EHSJF□M · EHSJFE□M only.
- Ⓜ For head thickness JIS less than D4 is T=4, please place the order for head thickness 4mm type of EHSF□M (P - 0.005) EHSFE□M (P - 0.01).
- Ⓜ 1MR and 2MR are sequential numbering designation. In the case of bulk order of two or more ejector pins with the same size, the sequential numbering engraving is performed.
- Ⓜ In case of 1MR, "0" is next to "9" while "A" is next to "Z".
- Ⓜ In case of 2MR, the 1st digit is sequential, and if next to "9" or "Z", it starts from "0" or "A" while the 2nd digit is increased by one.
- Ⓜ In case of 1MR and 2MR, other engraving characters cannot be used for designation.
  - When placing the order for 5 pieces of EHSF1MR2-150-P1.5-1, characters for engraving "1 2 3 4 5"
  - When placing the order for 3 pieces of EHSF1MR3-150-P2.0-Z, characters for engraving "Z A B"
  - When placing the order for 4 pieces of EHSF2MR4-100-P2.5-01, characters for engraving "01 02 03 04"
  - When placing the order for 4 pieces of EHSF2MR4-100-P2.5-A8, characters for engraving "A8 A9 B0 B1"
  - When placing the order for 6 pieces of EHSF2MR6-150-P4.5-1X, characters for engraving "1X 1Y 1Z 2A 2B 2C"

Order

Part Number: Type Character D - L - P - N - Characters for engraving (0~9, A~Z)

EHSJF 3M 5 - 250.00 - P4.50 - N130 - DEF

Days to Ship **Quotation**

Alterations Part Number: EHSJF3M 5 - 250.00 - P4.50 - N130 - Characters for engraving (0~9, A~Z, /, >, <, +, -, @, ·, .) - (AKC · AWC...etc.) DEF AWC45

Alterations	Code	Spec.	1Code
	AKC	AKC=1° increments 0 < AKC < 360 Ⓜ When combined with GCB/GCD, 90° increments only Ⓜ No need to designate AKCO	
	AWC	AWC=1° increments 0 ≤ AWC < 360 Ⓜ When combined with GCB/GCD, 90° increments only	
	KAC KBC	Varied width parallel flats cutting D/2 ≤ KAC < H/2 KBC = 0.1mm increments only KAC < KBC < H/2 Ⓜ Combination with other key flat cutting not available	
	ARC	ARC=1° increments 0 ≤ ARC < 360 Ⓜ When combined with GCB/GCD, 90° increments only	
	ADC	ADC=1° increments 0 ≤ ADC < 360 Ⓜ When combined with GCB/GCD, 90° increments only	
	KGA	KGA=1° increments 0 < KGA < 360	
	KGB	KGB=1° increments 0 < KGB < 360	

Alterations	Code	Spec.	1Code
	TC	TC=0.1mm increments T/2 ≤ TC < T, D ≥ 1.5 (Dimensions L and N remain unchanged.) T - TC ≤ Lmax. - L	
	HC	HC=0.1mm increments D + 1 ≤ HC < H, D ≥ 1.5	
	HCC	HCC=0.1mm increments D + 1 ≤ HCC < H - 0.3, D ≥ 1.5	
	NHC	Numbering on the head How to order P.128	
	NHN	Automatic sequential numbering on the head How to order P.128	
	GCB	GCB=1° increments 60 ≤ GCB < 90 Ⓜ Available when L ≤ 200, P ≥ 2, D ≥ 3 Ⓜ Combination with GCD not available.	
	GCD	GCD=1° increments 60 ≤ GCD < 90 Ⓜ Available when L ≤ 200, P ≥ 2, D ≥ 3 Ⓜ Combination with GCB not available.	
	EC	Engraving depth alteration 0.05 ~ 0.1 Ⓜ Available when P ≥ 1 Ⓜ Combination with GCB, GCD not available.	

Relationship between Shaft Diameter (P) and Character Size (Q, W)

No. of characters	P		
	Q	W	
1M 1MR (1 character)	0.30 ~ 0.39	0.2	0.1
	0.40 ~ 0.49	0.25	0.13
	0.50 ~ 0.59	0.35	0.18
	0.60 ~ 0.79	0.4	0.2
	0.80 ~ 0.90	0.6	0.3
	1.00 ~ 1.29	0.8	0.4
	1.30 ~ 1.49	1.0	0.5
	1.50 ~ 1.99	1.2	0.6
	2.00 ~ 2.49	1.5	0.8
	2.50 ~ 3.49	2.0	1.0
2M 2MR (2 characters)	3.50 ~ 4.49	3.0	1.5
	4.50 ~ 5.49	4.0	2.0
	5.50 ~ 11.90	5.0	2.5
	1.50 ~ 1.90	0.7	1.1
	2.00 ~ 2.29	0.8	1.2
	2.30 ~ 2.99	1.0	1.3
	3.00 ~ 3.99	1.5	2.0
	4.00 ~ 4.99	2.0	2.6
	5.00 ~ 5.99	2.5	3.3
	6.00 ~ 7.99	3.0	3.9
3M (3 characters)	8.00 ~ 11.90	4.0	5.2
	2.80 ~ 3.09	0.8	1.8
	3.10 ~ 4.49	1.0	2.1
	4.50 ~ 5.49	1.5	3.2
	5.50 ~ 6.99	2.0	4.2
4M (4 characters)	7.00 ~ 11.90	2.5	5.3
	3.60 ~ 3.89	0.8	2.4
	3.90 ~ 5.49	1.0	2.9
5M (5 characters)	5.50 ~ 6.99	1.5	4.4
	7.00 ~ 11.90	2.0	5.8
	4.50 ~ 4.99	0.8	3.0

Price **Quotation**

Engraving Details	Ejector pins		Finished products	
	Reversed reading (Concave character)	Right reading (Convex character)	Reversed reading (Concave character)	Right reading (Convex character)
	Width of engraving (a)	0.1 × Q ~ 0.2 × Q		
	Angle of engraving (b°)	35° ± 2°		
Depth of engraving (e)	When P ≤ 0.9		0.03 ± 0.01	
	When P ≥ 1.0		0.05 ± 0.02	
		When EC code is used		0.1 ± 0.02

Stepped Ejector Pins  
High Speed Steel SKH51 equivalent