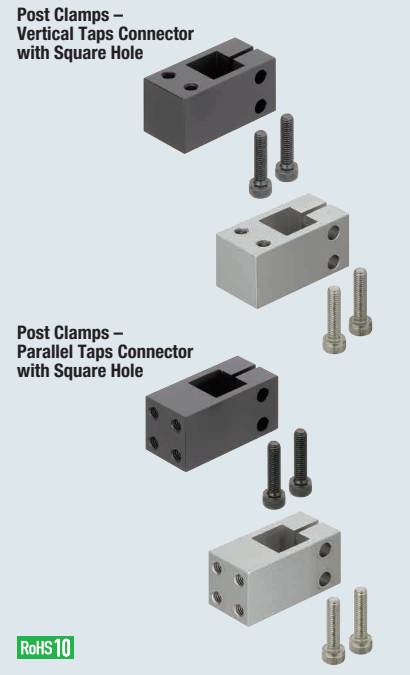


Post Clamps

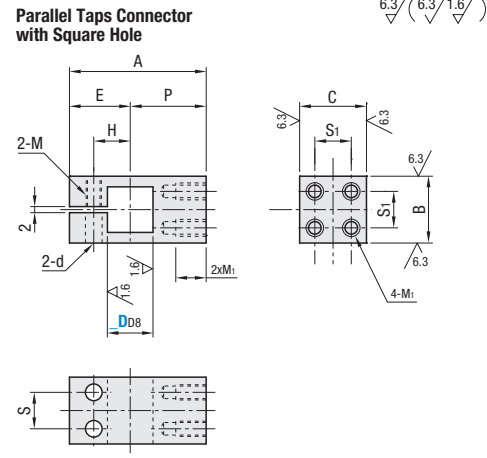
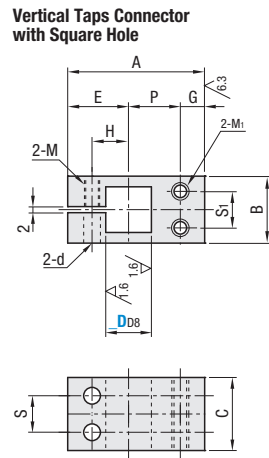
Vertical / Parallel Taps Square Hole

Features: Post clamps that height adjusts while preventing rotations by combining with Square tubes (P.2232) and Stand Brackets (P.2252). For tubes/pipes and rods to use in sets, see P.2232.



Type		Material	Surface Treatment	Accessories
Vertical Taps	Parallel Taps			
BMNQ	BQMQ	1045 Carbon Steel or Equivalent	Black Oxide	Hex Socket Head Cap Screws
NMNQ	NQMQ		Electroless Nickel Plating	
AMNQ	AQMQ	6063 Aluminum Alloy	Black Anodize	
WMNQ	WQMQ		Clear Anodize	
SMNQ	SQMQ	304 Stainless Steel	—	

Accessories: CB screws (P.2378) and SCB screws (P.2379) are included with Black Oxide / Black Anodize and the other types.



For D=10 and 12, Dimension S=0, only one screw for tightening.

Vertical Taps Connector with Square Hole

Type	Part Number	D ₀₈	P	A	B	C	E	G	H	S ₁	M ₁	S	M	d
BMNQ NMNQ AMNQ WMNQ SMNQ	10	+0.077 +0.050	11	31	16	16	15	5	9	8	M4	—	M5	5.5
	12		13	34	16	16	16	5	10	8				
	15	+0.098 +0.065	17	45	22	22	20	8	12	12	M5	12	M6	6.6
	20		20	52	28	28	22	10	15	16	M6	14		
	25		23	58	32	32	25	10	18	20				

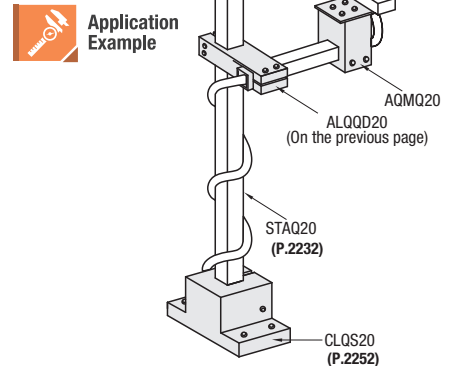
Tolerance of D₀₈ is the tolerance before slitting.
 Recommended D₀₈ tolerance of mating shafts is 0- -0.12. Tightening with a long wrench is recommended.

Parallel Taps Connector with Square Hole

Type	Part Number	D ₀₈	P	A	B	C	E	H	S ₁	M ₁	S	M	d
BQMQ NQMQ AQMQ WQMQ SQMQ	10	+0.077 +0.050	16	31	16	16	15	9	8	M4	—	M5	5.5
	12		18	34	16	16	16	10	8				
	15	+0.098 +0.065	25	45	22	22	20	12	12	M5	12	M6	6.6
	20		30	52	28	28	22	15	16	M6	16		
	25		33	58	32	32	25	18	20				

Tolerance of D₀₈ is the tolerance before slitting.
 Recommended D₀₈ tolerance of mating shafts is 0- -0.12. Tightening with a long wrench is recommended.

	Part Number Example	Part Number
		AMNQ15 SQMQ20



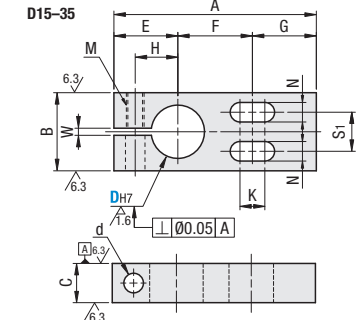
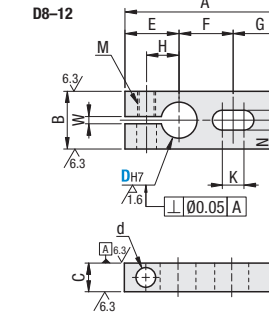
Post Clamps

Slotted Hole / L-Shaped

Post Clamps – Slotted Hole



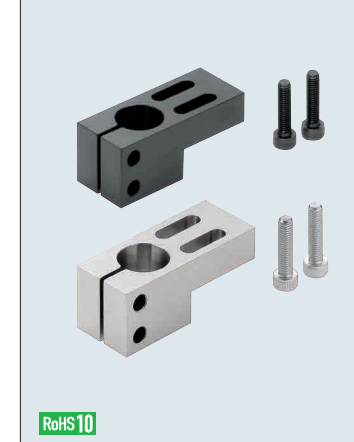
Type	Material	Surface Treatment	Accessories
KMCU	1018 Carbon Steel or Equivalent	Black Oxide	Hex Socket Head Cap Screws
MMCU	1018 Carbon Steel or Equivalent	Electroless Nickel Plating	
AMCU	Aluminum Alloy	Black Anodize	
HMCU		Clear Anodize	
SMCU	304 Stainless Steel	—	



Type	Part Number	D _{H7}	A	B	C	E	F	G	H	K	M	N	S ₁	d	W	Included Screws	Included Screws		
KMCU MMCU AMCU HMCU SMCU	8	+0.015 0	42	12	8	14	14	14	8	8.5	M5	5.5	—	5.5	2	CB5-10, 1pc.	SCB5-10, 1pc.		
	10	45	16	9	15	15	9	9.5	11										
	12	49	16	9	16	17	16	10		10.5									
	15	0	57	22	12	18	21	18	12	12.5	M6	6.5	14	16				CB5-20, 1pc.	SCB5-20, 1pc.
	20	69	28	16	22	25	22	15	15.5										
	25	+0.021 0	83	32	19	25	33	25	18	18.5	M8	9	20	9				CB6-25, 1pc.	SCB6-25, 1pc.
30	95	40	19	29	37	29	21	20											
35	+0.025 0	104	45	22	32	40	32	24	23	22	20	9	CB8-35, 1pc.	SCB8-35, 1pc.					
																CB8-40, 1pc.	SCB8-40, 1pc.		

D_{H7} tolerance is measured before slit machining. Recommended tolerances of mating shafts are g6, f8. Use of a long wrench is recommended for tightening.

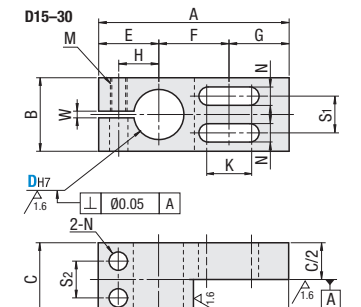
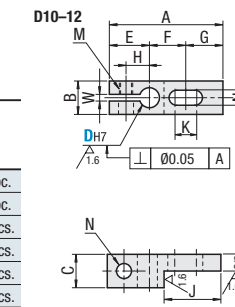
Post Clamps – L-Shaped



Type	Material	Surface Treatment	Accessories
KLQK	1018 Carbon Steel or Equivalent	Black Oxide	Hex Socket Head Cap Screws
MLQM		Electroless Nickel Plating	
ALQA	Aluminum Alloy	Black Anodize	
HLQA		Clear Anodize	
SLQS	304 Stainless Steel	—	

Included Screws

D	KLQK ALQA	MLQM HLQA SLQS
10	CB5-25, 1 pc.	SCB5-25, 1 pc.
12	CB5-30, 1 pc.	SCB5-30, 1 pc.
15	CB5-35, 2 pcs.	SCB5-35, 2 pcs.
20	CB6-35, 2 pcs.	SCB6-35, 2 pcs.
25	CB6-35, 2 pcs.	SCB6-35, 2 pcs.
30	CB8-40, 2 pcs.	SCB8-40, 2 pcs.



Type	Part Number	D _{H7}	A	B	C	E	F	G	H	J	K	M	N	S ₁	S ₂	W
KLQK MLQM ALQA HLQA SLQS	10	+0.015 0	45	16	16	15	15	15	9	22.5	9.5	M5	5.5	—	—	2
	12	+0.018 0	49			16	17	16	10	24.5	10.5					
	15	57	22	22	18	21	18	28.5	12.5							
	20	+0.021 0	69	28	28	22	25	22	15	34.5	15.5	M6	6.5	14	14	
	25	83	32	32	25	33	25	18	41.5	18.5						
	30	+0.021 0	95	40	40	29	37	29	21	47.5	20	M8	9	20	20	

The tolerance and perpendicularity of D_{H7} is before slitting.
 Recommended tolerances of mating shafts are g6, f8. Use of a long wrench is recommended for fastening.

	Part Number Example	Part Number
		MMCU15 KLQK15

