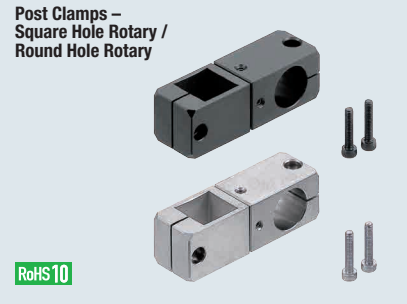




Post Clamps

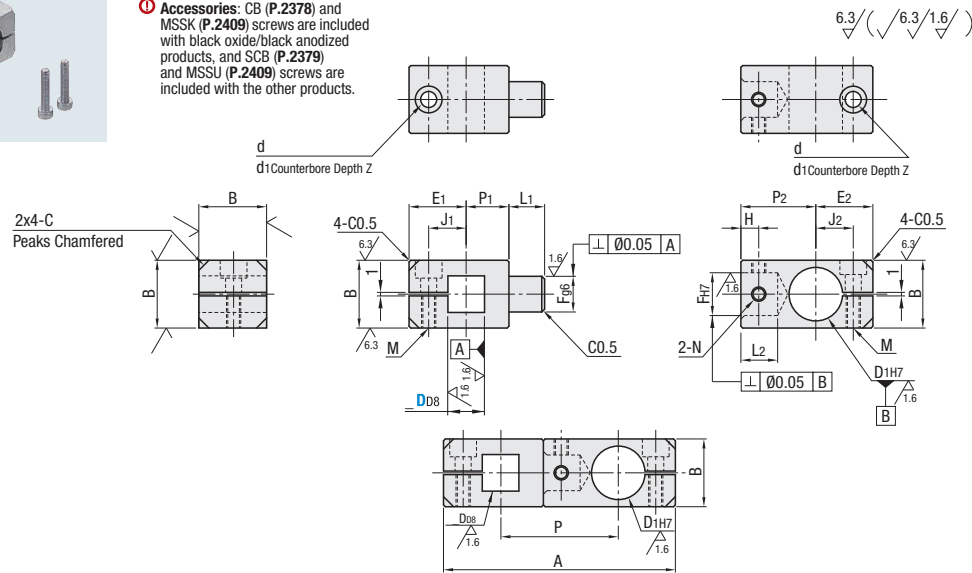
Square / Round Hole Rotary

Features: Combined with Square Tubes and Brackets for Stands, Post Clamps can prevent rotation while adjusting height.



Type	Material	Surface Treatment	Accessories
KHKR	1018 Carbon Steel or Equivalent	Black Oxide	Hex Socket Head Set Screws
MHKR		Electroless Nickel Plating	
AHKR	6063 Aluminum Alloy	Black Anodize	
HKHR		Clear Anodize	
SHKR	304 Stainless Steel	—	

Accessories: CB (P.2378) and MSSK (P.2409) screws are included with black oxide/black anodized products, and SCB (P.2379) and MSSU (P.2409) screws are included with the other products.

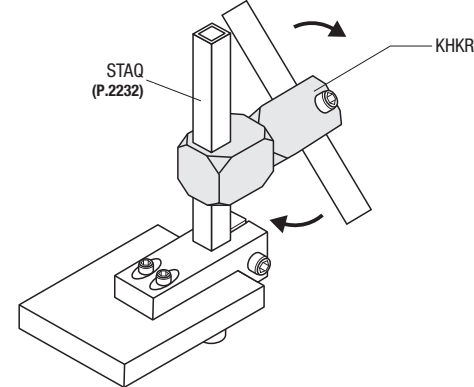


Part Number		D_{H7}^*		F	g_6	H_7	A	B	P	P_1	P_2	L_1	L_2	E_1	E_2	H	J_1	J_2	M (Coarse)	N (Coarse)	d	d_1	Z	C						
Type	D_{H7}^*	D_{H7}^*	D_{H7}^*																											
KHKR MHKR AHKR HKHR SHKR	8	+0.062	8	+0.015	5	-0.004	+0.012	43	12	19	7	12	6	6.3	12.5	11.5	3	8	7	M3	M3	3.5	6	3	2					
	10	+0.040	10	+0.015				52	13	23	9	14			15	15		14	10							9				
	12	+0.077	12	+0.018				58	15	26	11	15			16	15.5		11	10							M4	M4	4.5	7.5	5
	15	+0.050	15	+0.018				67	19	33	12	21			18	16		12.5	10.5											
	20	+0.098	20	+0.021				78	25	39	15	24			15	13		15	13							M5	M5	5.5	9	5.5
25	+0.065	25	+0.021	90	30	44	18	26	18	16	18	16																		

* The tolerance and perpendicularity of D_{H7} and D_{H7} is the tolerances before slitting.
 Recommended tolerances of D_1 mating shafts: g_6 , f_6 . Use of a long wrench is recommended for tightening.

Part Number Example: **KHKR20**

Application Example



Included Screws

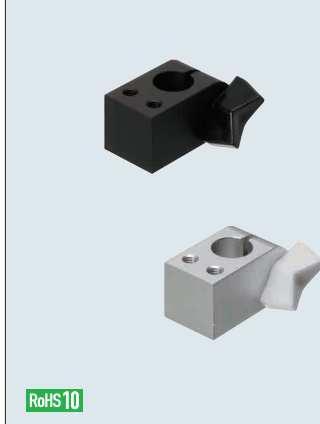
D	Included Screws
8	M3-8, 2 pcs.
10	M4-8, 2 pcs.
12	M4-10, 2 pcs.
15	M4-12, 2 pcs.
20	M4-20, 2 pcs.
25	M5-20, 2 pcs.

Super Compact Post Clamps

Vertical & Parallel Tapped with a Wing Knob / Vertical & Parallel Tapped

Features: Affordable and compact tapped post clamps. Wing Knob helps easy setup changes.

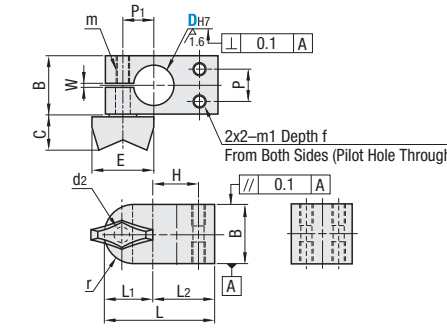
Super Compact Post Clamps – Vertical & Parallel Taps with Wing Knob



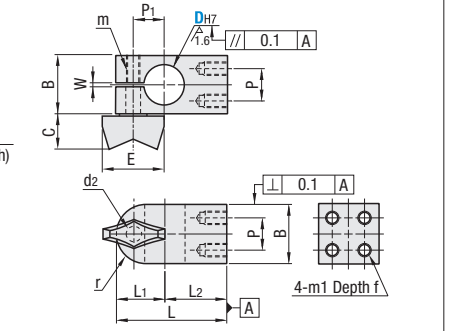
Type		Material	Surface Treatment	Accessories
Vertical Taps	Parallel Taps			
AMNCC	AQMCC	Aluminum Alloy	Black Anodize	Wing Knob (Black)
—	AQMWC		Clear Anodize	Wing Knob (White)

* Head of Wing Knob: Nylon 66
 Thread: SWRM Low Carbon Steel-10 (Trivalent Chromate)

Vertical Taps with Wing Knob



Parallel Taps with Wing Knob



Part Number		B	L	L_1	L_2	r	H	m_1	f	P	P_1	W	d_2	m	Wing Knob		
Type	D_{H7}														E	C	
Vertical Taps AMNCC Parallel Taps AQMCC AQMWC	6	+0.012	10	21.5	10.5	11	5	8	M2.6	4	5	6.5	1	3.5	M3	18	10.5
	8	+0.015	12	25	11	14	6	10	M3	5	6	7					
	10	0	16	29.5	13.5	16	8	11	M4	6	8	8.5	1.5	4.5	M4	28	15
	12	+0.018	18	32	14	18	9	13									
	15	0	22	41	18	23	11	17	M5	8	12	12	5.5	M5			

The tolerance and perpendicularity of D_{H7} is before slitting.
 Recommended tolerances of mating shafts are g_6 and f_6 . Except for wing knobs, use of a long wrench is recommended for fastening.

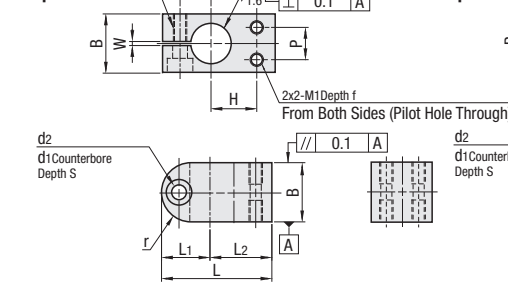
Part Number Example: **AQMWC10**

Super Compact Post Clamps – Vertical Taps and Parallel Taps

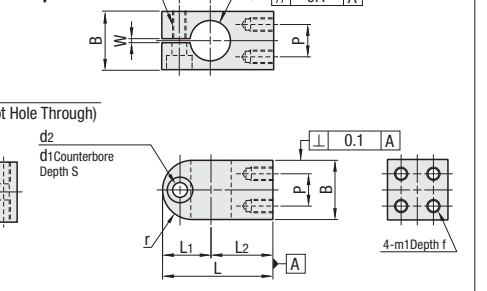


Type		Material	Surface Treatment	Accessories
Vertical Taps	Parallel Taps			
AMNC	AQMC	Aluminum Alloy	Black Anodize	Hex Socket Head Cap Screws
AMNW	AQMW		Clear Anodize	

Vertical Taps



Parallel Taps



Part Number		B	L	L_1	L_2	r	H	m_1	f	P	P_1	W	m	d_1	d_2	S	
Type	D_{H7}																
Vertical Taps AMNC Parallel Taps AQMC AQMW	6	+0.012	10	21.5	10.5	11	5	8	M2.6	4	5	6.5	1	M3	6.5	3.5	3.5
	8	+0.015	12	25	11	14	6	10	M3	5	6	7					
	10	0	16	29.5	13.5	16	8	11	M4	6	8	8.5	1.5	M4	8	4.5	4.5
	12	+0.018	18	32	14	18	9	13									
	15	0	22	41	18	23	11	17	M5	8	12	12	M5	9.5	5.5	5.5	

The tolerance and perpendicularity of D_{H7} is before slitting.
 Recommended tolerances of mating shafts are g_6 and f_6 . Except for wing knobs, use of a long wrench is recommended for fastening.

Part Number Example: **AMNC8**

D	Included Screws
6	M3-6
8	M3-8
10	M4-10
12	M4-12
15	M5-15