

Stainless Steel Pipe Frames / Casters / Adjustment Bolt Set / Insert Nuts

Stainless Steel Pipe Frames

PFSUS
L Configurable

Seam (Butt Weld*)

*The height of welding bead is shorter than 0.1 mm.

Material: 430 Stainless Steel

RoHS 10

L Dimension Configurable

Part Number		L 1mm Increment	Mass kg/m
Type	No.		
PFSUS	28	60-2400	0.62



Part Number Example
PFSUS - **L**
 - 1250

Accessories Parts for Stainless Steel Pipe Frame

The size of the Stainless Pipe Frame is different from that of the conventional frames (i.e. Resin Coating Pipe Frame and Aluminum Extruded Pipe Frame). Therefore, some conventional accessory parts cannot be used; if they were intended to be set inside of the pipe frames:

Casters

FFS301 **FFS301S With Stopper**

Wrench Flat

*Tighten with a Wrench for Pipe Inserts (PFSP21). (P.3018)

⚠ When mounted to the Stainless Pipe Frame, please use it combined with the Insert Nut (SPFINS12).

Type	Main Body		Wheel Material	Bearing Body
	Material	Surface Treatment		
FFS301	Low Carbon Steel	Trivalent Chromate	Synthetic Rubber	Provided
FFS301S	Low Carbon Steel	Trivalent Chromate	Synthetic Rubber	Provided

Part Number	Wheel Material		M	B	F	H	J	E	Wrench Width mm	Mass kg	Allowable Load N
	Type	Component									
FFS301	50	R	12	20	17.5	68	35	22	19	165	300
	75										
FFS301S with Stopper	50	Synthetic Rubber	12	20	30.9	68	35	22	19	190	300
	75										

Adjustment Bolt Set

JBS410S

SPFINS12
NFJN12-100

⚠ Insert Nut SPFINS12 and an Adjustment Pad NFJN12-100 are included as a set.

Part Number	Adjusting Bolts		Insert Nut
	Material	Surface Treatment	
JBS410S	1018 Carbon Steel or Equivalent	Trivalent Chromate	Stainless Steel

Insert Nuts

SPFINS12

Material: Stainless Steel

Tapered part from tip to head (1.2°) allows insertion into inner diameters of pipe frames.

Part Number	Mass (g)
JBS410S	269

Type	Part Number	Mass (g)
SPFINS	12	85

Part Number Example
FFS301-75 - **R**
FFS301S-50 - **R**
JBS410S
SPFINS12

Joints for Stainless Steel Pipes / Inner Cap

Joints for Stainless Steel Pipes / Inner Cap

Part Number	Material	Plate Thickness	Surface Treatment
PBLSS	SAPH	2.6 mm	Trivalent Chromate

RoHS 10

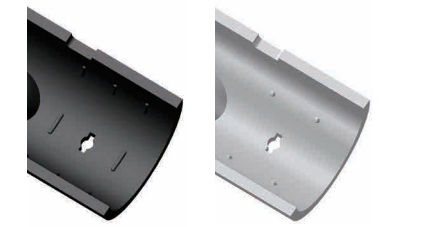
PBLSS1 **PBLSS2** **PBLSS3** **PBLSS4** **PBLSS5** **PBLSS6** **PBLSS7**

Type	Part Number	No.	Mass (g)	Included Screws	
				Size	Qty.
PBLSS	1	1	160	M6-25	1
	2	2	250		2
	3	3	325		3
	4	2	250		2
	5	4	400		4
	6	1	150		1
	7	2	260		2

Part Number Example
PBLSS1

Features of Joints for Stainless Pipe

The spurs that contact the pipes have been revised with improved geometry, and the retention force has been improved for use with stainless steel pipes. (For details, refer to P.3004).



⚠ Please note that the spurs may be crushed by repeated assembly / disassembly and may reduce the gripping force.

Inner Cap

JBS402S

Material: Polyethylene

Part Number	Mass (g)
JBS402S	3

⚠ Contains 4 pcs./pkg. Check the order quantity before ordering.

Part Number Example
JBS402S