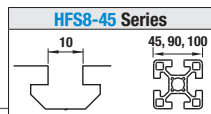
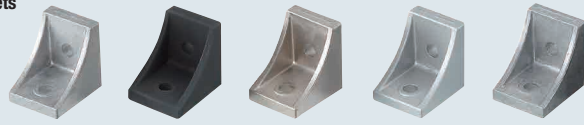


# Tabbed Brackets

Slot Type: HFS8-45 Series (Aluminum Extrusions 45, 90, 100 mm Square)

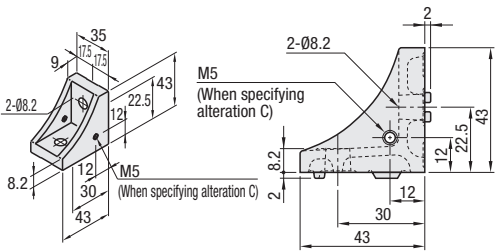


## Reversal Tabbed Brackets

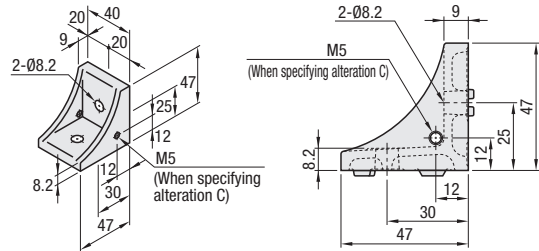


| Type               | Material                     | Surface Treatment          |
|--------------------|------------------------------|----------------------------|
| <b>HLFNSN8-45</b>  | Aluminum Casting Alloy ADC12 | —                          |
| <b>HLFNSNB8-45</b> |                              | Black Anodize              |
| <b>HLFNSNM8-45</b> |                              | Electroless Nickel Plating |
| <b>CHLFSN8-45</b>  |                              | Baked-On Finish (Silver)   |
| <b>HLFNSN8-50</b>  |                              | —                          |

Reversal Tabbed Brackets  
**HLFNSN8-45**  
**HLFNSNB8-45**  
 Black Anodize  
**HLFNSNM8-45**  
 Electroless Nickel Plating  
**CHLFSN8-45**  
 Baked-On Finish / Silver



For 50 Sq.  
 Reversal Tabbed Brackets  
**HLFNSN8-50**



| Part Number                                   | Mass (g) | Applicable Screw / T Nut |          |         |          | Allowable Load (N) |
|---|----------|--------------------------|----------|---------|----------|--------------------|
|   |          | Screw                    | Quantity | T Nut   | Quantity |                    |
| <b>HLFNSN8-45</b>                             | 55       | CBM8-20                  | 2        | HNNT8-8 | 2        | 2058               |
| <b>HLFNSNB8-45</b> Black Anodize              |          |                          |          |         |          |                    |
| <b>HLFNSNM8-45</b> Electroless Nickel Plating |          |                          |          |         |          |                    |
| <b>CHLFSN8-45</b> Baked-On Finish / Silver    |          |                          |          |         |          |                    |
| <b>HLFNSN8-50</b>                             | 78       |                          |          |         |          |                    |

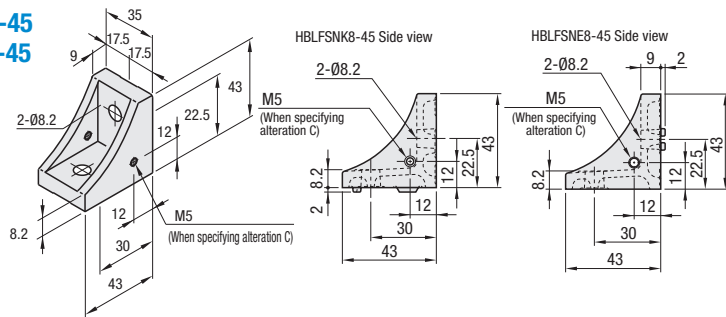
\* For repairing black anodizing, refer to P.2965.

## Brackets with Single Side Tab



Material: Aluminum Casting Alloy ADC12

**HLFNSNK8-45**  
**HLFNSNE8-45**

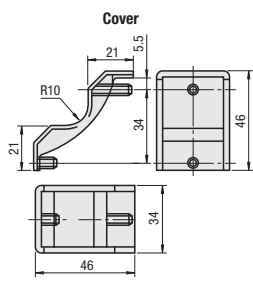
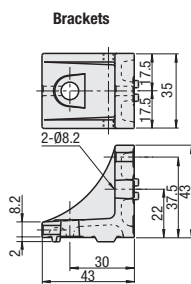
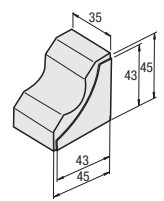
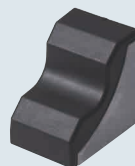


| Part Number        | Mass (g) | Applicable Screw / T Nut |          |         |          | Allowable Load (N) |
|--------------------|----------|--------------------------|----------|---------|----------|--------------------|
|                    |          | Screw                    | Quantity | T Nut   | Quantity |                    |
| <b>HLFNSNK8-45</b> | 55       | CBM8-20                  | 2        | HNNT8-8 | 2        | 2058               |
| <b>HLFNSNE8-45</b> |          |                          |          |         |          |                    |

Features: Brackets with tabs to fit in slots of extrusions and stop rotating when tightening.

## Brackets with Caps

**HLFNSNT8-45**

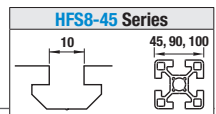


| Type               | Material  | Surface Treatment |
|--------------------|---|-------------------|
| <b>HLFNSNT8-45</b> | Cover for Brackets: Polyamide (black)<br>Bracket: ADC12 Aluminum Alloy Cast | —                 |

| Part Number        | Mass (g) | Accessory Components |          |                    | Applicable Screw / T Nut |         |          |         | Allowable Load (N) |          |
|--------------------|----------|----------------------|----------|--------------------|--------------------------|---------|----------|---------|--------------------|----------|
|                    |          | (1)                  | Quantity | (2)                | Quantity                 | Screw   | Quantity | T Nut   |                    | Quantity |
| <b>HLFNSNT8-45</b> | 62       | Bracket              | 1        | Cover for Brackets | 1                        | CBM8-20 | 2        | HNNT8-8 | 2                  | 2058     |

# Tabbed Brackets

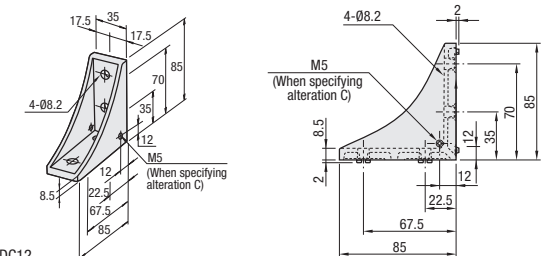
Slot Type: HFS8-45 Series (Aluminum Extrusions 45, 90, 100 mm Square)



## Reversal Tabbed Brackets

**HLFSSW8-45**

Material: Aluminum Casting Alloy ADC12



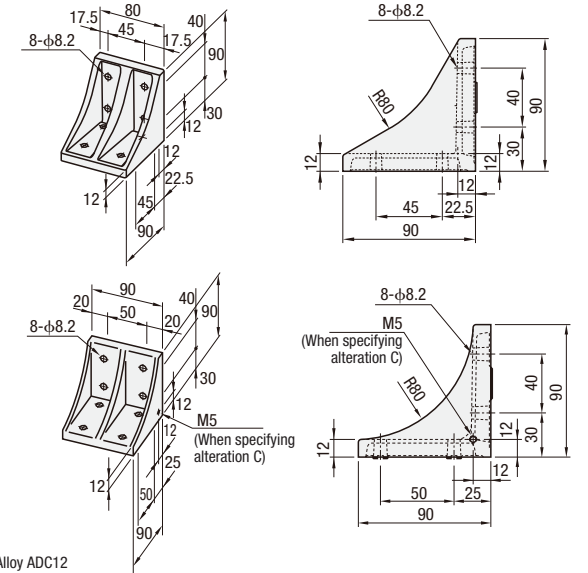
| Part Number       | Mass (g) | Applicable Screw / T Nut |          |         |          | Allowable Load (N) |
|-------------------|----------|--------------------------|----------|---------|----------|--------------------|
|                   |          | Screw                    | Quantity | T Nut   | Quantity |                    |
| <b>HLFSSW8-45</b> | 136      | CBM8-20                  | 4        | HNNT8-8 | 4        | 3087               |

## Reversal Tabbed Brackets

**HLFSDW8-90**

**HLFSDW8-100**

Material: Aluminum Casting Alloy ADC12



| Part Number        | Mass (g) | Applicable Screw / T Nut |          |         |          | Allowable Load (N) |
|--------------------|----------|--------------------------|----------|---------|----------|--------------------|
|                    |          | Screw                    | Quantity | T Nut   | Quantity |                    |
| <b>HLFSDW8-90</b>  | 360      | SCB8-22                  | 8        | HNNT8-8 | 8        | 4986               |
| <b>HLFSDW8-100</b> | 450      |                          |          |         |          | 5586               |

Part Number Example: **HLFNSNK8-45**

Part Number Alterations: **HLFNSNK8-45 - (C / SET / SST / SEU / SSU / SEP / SSP / SEC) SET**

| Alterations                        | Code | Specification  | Applicable Bracket                      |
|------------------------------------|------|--|---|
| Mounting Hole Alteration for Cover | C    | Adds a tap for a bracket for cover mounting. (M5 on Both Sides) (Mounting screw P.2861 HCBM) | <b>HLFNSN8-45</b>                       |
|                                    |      |  | <b>HLFNSNB8-45</b>                      |
|                                    |      |  | <b>HLFNSNM8-45</b>                      |
|                                    |      |  | <b>CHLFSN8-45</b>                       |
|                                    |      |  | <b>HLFNSN8-50</b>                       |
|                                    |      |  | <b>HLFNSNE8-45</b>                      |
|                                    |      |  | <b>HLFNSNT8-45</b>                      |
|                                    |      |  | <b>HLFSSW8-45</b><br><b>HLFSDW8-100</b> |

| Alterations  | Code                            | Specification  | Applicable Brackets |           |      |     |         |         |     |         |           |     |         |         |     |         |          |     |         |         |     |         |          |     |          |         |                   |
|--|---------------------------------|--|---------------------|-----------|------|-----|---------|---------|-----|---------|-----------|-----|---------|---------|-----|---------|----------|-----|---------|---------|-----|---------|----------|-----|----------|---------|-------------------|
| Applicable Screws & Nuts Set                                     | <b>SET</b><br>(Stainless Steel) | Supplies a set of applicable screws and nuts for fixing the bracket to an extrusion. (Adds to the bracket price)<br><br>(Ex.) When HLFNSN8-45 is specified,<br><table border="1"> <thead> <tr> <th>Code</th> <th>Screws</th> <th>Nuts</th> </tr> </thead> <tbody> <tr> <td>SET</td> <td>CBM8-20</td> <td>HNNT8-8</td> </tr> <tr> <td>SST</td> <td>SCB8-20</td> <td>HNNTSN8-8</td> </tr> <tr> <td>SEU</td> <td>CBM8-20</td> <td>HNTU8-8</td> </tr> <tr> <td>SSU</td> <td>SCB8-20</td> <td>SHNTU8-8</td> </tr> <tr> <td>SEP</td> <td>CBM8-20</td> <td>HNTP8-8</td> </tr> <tr> <td>SSP</td> <td>SCB8-20</td> <td>SHNTP8-8</td> </tr> <tr> <td>SEC</td> <td>HCBS8-24</td> <td>HNNT8-8</td> </tr> </tbody> </table> | Code                | Screws    | Nuts | SET | CBM8-20 | HNNT8-8 | SST | SCB8-20 | HNNTSN8-8 | SEU | CBM8-20 | HNTU8-8 | SSU | SCB8-20 | SHNTU8-8 | SEP | CBM8-20 | HNTP8-8 | SSP | SCB8-20 | SHNTP8-8 | SEC | HCBS8-24 | HNNT8-8 | <b>HLFNSN8-45</b> |
|  | Code                            |  | Screws              | Nuts      |      |     |         |         |     |         |           |     |         |         |     |         |          |     |         |         |     |         |          |     |          |         |                   |
|  | SET                             |  | CBM8-20             | HNNT8-8   |      |     |         |         |     |         |           |     |         |         |     |         |          |     |         |         |     |         |          |     |          |         |                   |
|  | SST                             |  | SCB8-20             | HNNTSN8-8 |      |     |         |         |     |         |           |     |         |         |     |         |          |     |         |         |     |         |          |     |          |         |                   |
|  | SEU                             |  | CBM8-20             | HNTU8-8   |      |     |         |         |     |         |           |     |         |         |     |         |          |     |         |         |     |         |          |     |          |         |                   |
|  | SSU                             |  | SCB8-20             | SHNTU8-8  |      |     |         |         |     |         |           |     |         |         |     |         |          |     |         |         |     |         |          |     |          |         |                   |
|  | SEP                             |  | CBM8-20             | HNTP8-8   |      |     |         |         |     |         |           |     |         |         |     |         |          |     |         |         |     |         |          |     |          |         |                   |
|  | SSP                             |  | SCB8-20             | SHNTP8-8  |      |     |         |         |     |         |           |     |         |         |     |         |          |     |         |         |     |         |          |     |          |         |                   |
|  | SEC                             |  | HCBS8-24            | HNNT8-8   |      |     |         |         |     |         |           |     |         |         |     |         |          |     |         |         |     |         |          |     |          |         |                   |
|  | <b>SST</b>                      |  | <b>HLFNSNB8-45</b>  |           |      |     |         |         |     |         |           |     |         |         |     |         |          |     |         |         |     |         |          |     |          |         |                   |
| <b>SEU</b><br>(Pre-Assy. Insertion Spring Nuts)                  | <b>HLFNSNM8-45</b>              |  |                     |           |      |     |         |         |     |         |           |     |         |         |     |         |          |     |         |         |     |         |          |     |          |         |                   |
| <b>SSU</b><br>(Pre-Assy. Insertion Spring Nuts Stainless Steel)  | <b>CHLFSN8-45</b>               |  |                     |           |      |     |         |         |     |         |           |     |         |         |     |         |          |     |         |         |     |         |          |     |          |         |                   |
| <b>SEP</b><br>(Post-Assy. Insertion Spring Nuts)                 | <b>HLFNSN8-50</b>               |  |                     |           |      |     |         |         |     |         |           |     |         |         |     |         |          |     |         |         |     |         |          |     |          |         |                   |
| <b>SSP</b><br>(Post-Assy. Insertion Spring Nuts Stainless Steel) | <b>HLFNSNE8-45</b>              |  |                     |           |      |     |         |         |     |         |           |     |         |         |     |         |          |     |         |         |     |         |          |     |          |         |                   |
| <b>SEC</b><br>(Washer Integrated Screws / Nuts)                  | <b>HLFNSNT8-45</b>              |  |                     |           |      |     |         |         |     |         |           |     |         |         |     |         |          |     |         |         |     |         |          |     |          |         |                   |
|  |                                 | <b>HLFSSW8-45</b>  |                     |           |      |     |         |         |     |         |           |     |         |         |     |         |          |     |         |         |     |         |          |     |          |         |                   |
|  |                                 | <b>HLFSDW8-100</b>   |                     |           |      |     |         |         |     |         |           |     |         |         |     |         |          |     |         |         |     |         |          |     |          |         |                   |

Ⓢ Screws for black anodized parts are HCBMTB (Trivalent Chromate Black). P.2858  
 Ⓢ Not RoHS compliant when -SET, -SEU or -SEP other than black anodized parts is specified.