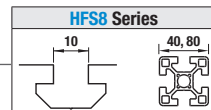


Pre-Assembly Insertion Nuts / Stoppers for Aluminum Extrusions

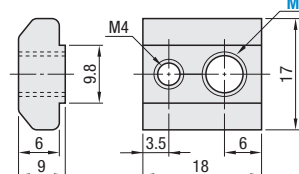
For HFS8 Series Aluminum Extrusions 40, 80mm Square



Pre-Assembly Insertion Lock Nuts

HNTC8

Reference Tightening Torque (N·m)	
M	1010 Carbon Steel
8	23.5



Material: 1010 Carbon Steel Equivalent
Surface Treatment: Trivalent Chromate

RoHS 10

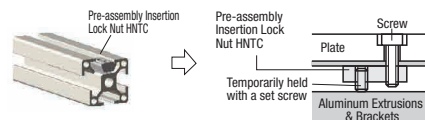
Part Number	M	Accessories
HNTC8	8	M4x8 Set Screw for Locking 1 pc.

Overall length is shorter than Pre-Assembly Insertion Nuts HNTT. Suitable for installing sensors or other components closely together. Stopper is not included.



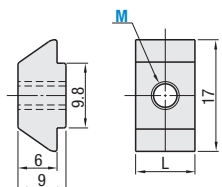
Application Example

Pre-Assembly Insertion Lock Nuts
The position of post-assembly insertion lock nuts can be fixed temporarily with the set screw.



Pre-Assembly Insertion Short Nuts

HNTJ8 PACK-HNTJ8



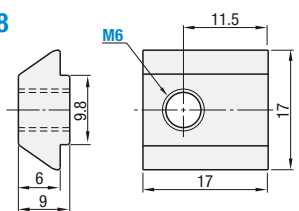
Material: 1010 Carbon Steel
Surface Treatment: Trivalent Chromate

RoHS 10

Part Number	M	L
HNTJ8	3	8
PACK-HNTJ8	4	12
	8	12

Pre-Assembly Insertion Offset Nuts

HNTHSN8



Material: 316 Stainless Steel Equivalent (Sintering)

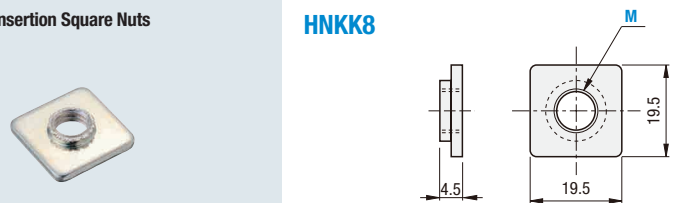
RoHS 10

*Electrically conductive

The pre-assembly insertion offset nut, used in combination with a post-assy. insertion double joint, can be fixed in such a way that the nut, even if connected at the corner of the extrusion, does not protrude from the extrusion (frame).

Pre-Assembly Insertion Square Nuts

HNKK8



Material: Low Carbon Steel
Surface Treatment: Trivalent Chromate

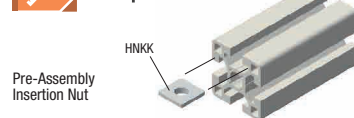
RoHS 10

100 pcs. per package

Part Number	M
HNKK8	4 5 6 8

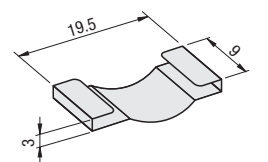


Application Example



Metal Stoppers for Pre-Assembly Insertion Square Nuts

HNKKST8



Material: 301 Stainless Steel

RoHS 10

100 pcs. per package

Part Number	Applicable Pre-Assembly Insertion Nuts
HNKKST8	HNKK8



Application Example



Part Number Example	Part Number	M
	HNTC8	8
	HNTJ8	8
	HNTHSN8	8
	HNKK8	8
	HNKKST8	8

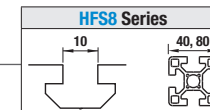
Applicable Extrusions and Brackets

Applicable to extrusions and brackets with the same part number.

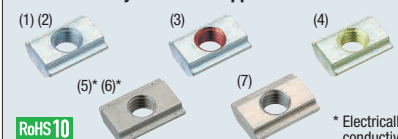
(Ex.)	Part Number
Pre-Assembly Insertion Stoppers	HNTT8 -
Extrusion	HNST8
Extrusion	HFS8 -
Brackets	HBLFSN8

Post-Assembly Insertion Nuts / Stoppers for Aluminum Extrusions

For HFS8 Series Aluminum Extrusions 40, 80 mm Square



Post-Assembly Insertion Stopper Nuts



RoHS 10

* Electrically conductive

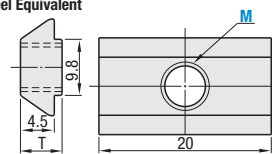
Type	Material	Surface Treatment
(1) HNTA8	1010 Carbon Steel	Trivalent Chromate
(2) PACK-HNTA8		
(3) HNTAV8		
(4) HNTAZ8		
(5) HNTASN8*	316 Stainless Steel (Sintering)	—
(6) PACK-HNTASN8*		
(7) HNTASS8		

HNTA8 1010 Carbon Steel

PACK-HNTA8 1010 Carbon Steel, 100/pkg.
HNTAV8 Thread Locking Adhesive Type, 1010 Carbon Steel
HNTAZ8 Thread Locking Resin Coating Type, 1010 Carbon Steel
HNTASN8 316 Stainless Steel, Sintering
PACK-HNTASN8 316 Stainless Steel, Sintering, 100/pkg.
HNTASS8 303 Stainless Steel Equivalent

Reference Tightening Torque (N·m)

M	1010 Carbon Steel / 316 Stainless Steel (Sintering) / 303 Stainless Steel or Equivalent
8	23.5



Details of Thread Locking Type P.2800.

Bulk Packages

Part Number	M
PACK-HNTA8	4 5 6 8
PACK-HNTASN8	4 5 6 8
PACK-HNTASS8	4 5 6 8



Part Number Example

Part Number	M
HNTA8	8

Post-Assembly Insertion Nuts



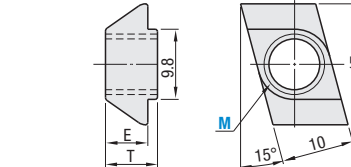
RoHS 10

* Electrically conductive

Type	Material	Surface Treatment
(1) HNTF8	1010 Carbon Steel	Trivalent Chromate
(2) HNTFV8		
(3) HNTFZ8		
(4) HNTFSN8*	316 Stainless Steel (Sintering)	—

HNTF8 1010 Carbon Steel

HNTFV8 Thread Locking Adhesive, 1010 Carbon Steel
HNTFZ8 Thread Locking Resin Coating Type, 1010 Carbon Steel
HNTFSN8 316 Stainless Steel, Sintering



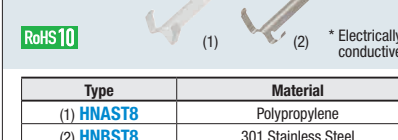
Reference Tightening Torque (N·m)

M	1010 Carbon Steel / 316 Stainless Steel (Sintering)
8	23.5

Details of Thread Locking Type P.2800.

Part Number	M	E	T
HNTF8 1010 Carbon Steel	4 5 6 8	6.0	9.0
HNTFV8 Thread Locking / 1010 Carbon Steel	8		
HNTFZ8 Thread Locking / 1010 Carbon Steel	8		
HNTFSN8 316 Stainless Steel, Sintering	4 5 6 8	6.4	8.9

Post-Assembly Insertion Stoppers

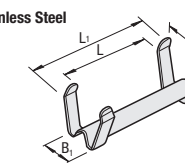


RoHS 10

* Electrically conductive

Type	Material
(1) HNAST8	Polypropylene
(2) HNBST8	301 Stainless Steel

HNAST8 Polypropylene HNBST8 301 Stainless Steel



Part Number	Applicable Stopper Nut	Color	L	B	L ₁	B ₁
HNAST8	HNTA8 HNTAV8 HNTAZ8	White	22	12	28	8
HNBST8	HNTASN8 HNTASS8	—	23	14	28	8

Post-Assembly Insertion Nut and Stopper Set



RoHS 10

HNTAT8 1010 Carbon Steel Set HNTATS8 316 Stainless Steel Set

Type	(B) Stopper Nut	(A) Stopper
HNTAT8	HNTA8	HNAST8
HNTATS8*	HNTASN8	

* Electrically conductive

Post-Assembly Insertion Nut and Metal Stopper Set



RoHS 10

HNTBT8 1010 Carbon Steel Set HNTBTS8 316 Stainless Steel Set

Type	(B) Stopper Nut	(A) Stopper
HNTBT8	HNTA8	HNBST8
HNTBTS8*	HNTASN8	

* Electrically conductive

Part Number	M
HNTAT8	4 5 6 8
HNTATS8	4 5 6 8

Part Number	M
HNTBT8	4 5 6 8
HNTBTS8*	4 5 6 8



Part Number Example

Part Number	M
HNAST8	8
HNTAT8	8