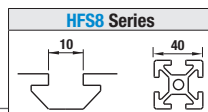
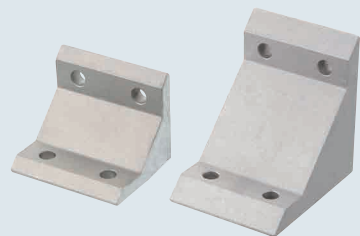


Tabbed Brackets

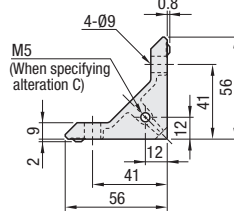
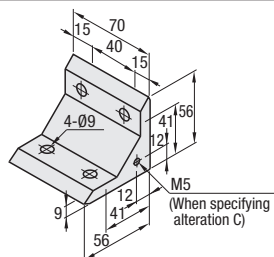
Slot Type: HFS8 Series (Aluminum Extrusions 40, 80 Square)



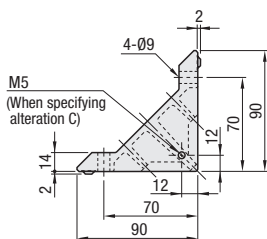
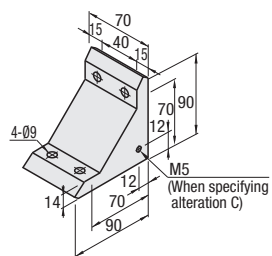
Tabbed Brackets



HBLFTD8



HBLFUD8



Material: Aluminum Casting Alloy ADC12

Part Number	Mass (g)	Applicable Screw / T Nut				Allowable Load (N)
		Screw	Quantity	T Nut	Quantity	
HBLFTD8	140	CBM8-20	4	HNTT8-8	4	3087
HBLFUD8	370	CBM8-25	4	HNTT8-8	4	3920



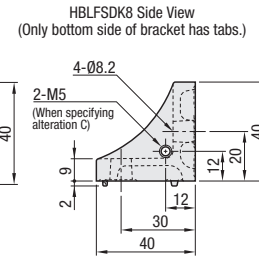
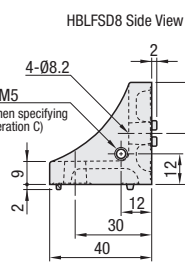
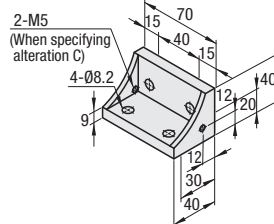
Can be connected in parallel and perpendicular directions to the extrusion slot.



Reversal Tabbed Brackets



HBLFSD8
HBLFSDK8
(with Single Side Tab)



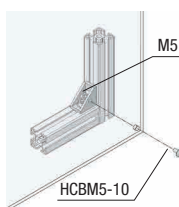
Material: Aluminum Casting Alloy ADC12

Part Number	Mass (g)	Applicable Screw / T Nut				Allowable Load (N)
		Screw	Quantity	T Nut	Quantity	
HBLFSD8	89	CBM8-20	4	HNTT8-8	4	3087
HBLFSDK8						



Adds tabs on a bracket for cover mounting. (M5 on Both Sides) (Mounting Screw P.2861 HCBM)

Example of Cover Mounting Specify alteration code C.



Part Number Example **HBLFSD8**

Part Number Alterations **HBLFSD8** - **SET**
HBLFSD8 - **C-SET**

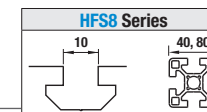
Alterations	Code	Spec.	Applicable Brackets
Mounting Hole Alteration for Cover	C	Adds tabs on a bracket for cover mounting. (M5 on Both Sides) (Mounting screw P.2861 HCBM)	HBLFSD8 HBLFSDK8 HBLFTD8 HBLFUD8

Alterations	Code	Spec.	Applicable Brackets																								
Applicable Screws and Nuts Set	SET SST (Stainless Steel)	Applicable screws and nuts for fixing the brackets on extrusions come in a set. (Ex.) When HBLFSSW8 is specified: <table border="1"> <thead> <tr> <th>Code</th> <th>Screw</th> <th>Nut</th> </tr> </thead> <tbody> <tr> <td>SET</td> <td>CBM8-20</td> <td>HNTT8-8</td> </tr> <tr> <td>SST</td> <td>SCB8-20</td> <td>HNTT8-8</td> </tr> <tr> <td>SEU</td> <td>CBM8-20</td> <td>HNTU8-8</td> </tr> <tr> <td>SSU</td> <td>SCB8-20</td> <td>SHNTU8-8</td> </tr> <tr> <td>SEP</td> <td>CBM8-20</td> <td>HNTP8-8</td> </tr> <tr> <td>SSP</td> <td>SCB8-20</td> <td>SHNTP8-8</td> </tr> <tr> <td>SEC</td> <td>HCBST8-24</td> <td>HNTT8-8</td> </tr> </tbody> </table>	Code	Screw	Nut	SET	CBM8-20	HNTT8-8	SST	SCB8-20	HNTT8-8	SEU	CBM8-20	HNTU8-8	SSU	SCB8-20	SHNTU8-8	SEP	CBM8-20	HNTP8-8	SSP	SCB8-20	SHNTP8-8	SEC	HCBST8-24	HNTT8-8	HBLFSSW8
	Code		Screw	Nut																							
	SET		CBM8-20	HNTT8-8																							
	SST		SCB8-20	HNTT8-8																							
	SEU		CBM8-20	HNTU8-8																							
	SSU		SCB8-20	SHNTU8-8																							
	SEP		CBM8-20	HNTP8-8																							
	SSP		SCB8-20	SHNTP8-8																							
	SEC		HCBST8-24	HNTT8-8																							
	SEU (Pre-assy. Insertion Spring Nuts)			HBLFSD8																							
SSU (Pre-assy. Insertion Spring Nuts Stainless Steel)		HBLFTD8																									
SEP (Post-assy. Insertion Spring Nuts)		HBLFUD8																									
SSP (Post-assy. Insertion Spring Nuts Stainless Steel)																											
SEC (Washer Integrated Screws, Nut)																											

Ⓢ Screws for black anodized parts are HCBMTB (Trivalent Chromate Black). P.2858
Ⓢ Not RoHS compliant when -SET, -SEU or -SEP are specified.

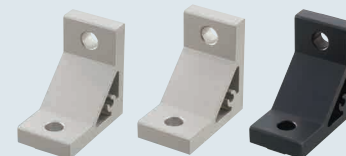
Extruded Brackets (For 1 Slot)

Slot type: HFS8 Series (Aluminum Extrusions 40, 80 Square)



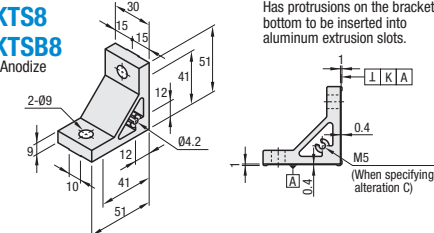
Feature: Extruded Brackets with tabs to fit extrusions. Excels in work efficiency since the tabs stop rotating the brackets when tightening.

Thick Brackets (With Tab Type)



Part Number	Perpendicularity K	
	Screw	Quantity
HBKTST8	0.03	
HBKTS8 HBKTSB8 (Black Anodize)	0.06	

HBKTST8
Perpendicularly Machined
HBKTS8
HBKTSB8
Black Anodize



Has protrusions on the bracket bottom to be inserted into aluminum extrusion slots.

RoHS 10

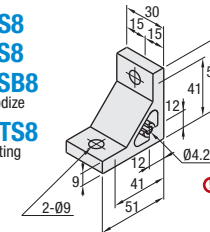
Part Number	Mass (g)	Applicable Screw / T Nut				Allowable Load (N)
		Screw	Quantity	T Nut	Quantity	
HBKTST8	65.8	CBM8-20	2	HNTT8-8	2	2058
HBKTS8						
HBKTSB8* (Black Anodize)						

*For repairing black anodizing, refer to P.2965.

Thick Brackets



NBLTS8
HBLTS8
HBLTSB8
Black Anodize
CHBLTS8
Clear Coating



Ⓢ Both sides and screw holes of NBLTS8 is not anodized.

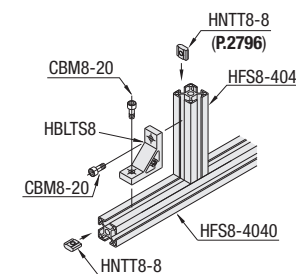
Type	Material	Surface Treatment
NBLTS8	6063-T5 Aluminum Alloy	Anodize Ⓢ
HBLTS8 HBLTSB8	A6N01SS-T5 Aluminum Alloy	Black Anodize
CHBLTS8		Clear Coating (Anodize + Clear Paint)

Part Number	Mass (g)	Applicable Screw / T Nut				Allowable Load (N)
		Screw	Quantity	T Nut	Quantity	
NBLTS8	65.8	CBM8-20	2	HNTT8-8	2	2058
HBLTS8						
HBLTSB8* (Black Anodize)						
CHBLTS8 (Clear Coating)						

* For repairing black anodizing, refer to P.2865.



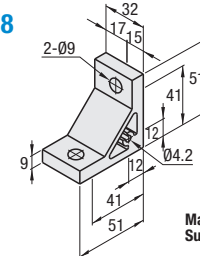
Example of Frame Connection Connection with Thick Bracket



Eccentric Brackets



HBLTH8



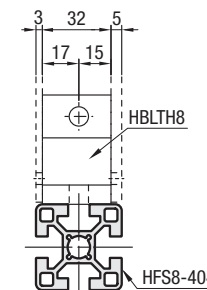
Material: A6N01SS-T5 Aluminum Alloy
Surface Treatment: Anodize

Part Number	Mass (g)	Applicable Screw / T Nut				Allowable Load (N)
		Screw	Qty.	T Nut	Qty.	
HBLTH8	68	CBM8-20	2	HNTT8-8	2	2058

Alterations	Code	Spec.	Applicable Brackets
Mounting Holes Alteration for Cover	C	Adds tabs on a bracket for cover mounting. (M5 on Both Sides) (Mounting screw P.2861 HCBM)	HBKTS8
			NBLTS8
			HBLTS8
			CHBLTS8
			HBLTH8



Ⓢ They can be combined with cover plates of thickness 3 mm and 5 mm.



Alterations	Code	Spec.	Applicable Brackets																								
Applicable Screws and Nuts Set	SET SST (Stainless Steel)	Applicable screws and nuts for fixing the brackets on extrusions come in set. (Ex.) When HBLTS8 is specified, <table border="1"> <thead> <tr> <th>Code</th> <th>Screws</th> <th>Nuts</th> </tr> </thead> <tbody> <tr> <td>SET</td> <td>CBM8-20</td> <td>HNTT8-8</td> </tr> <tr> <td>SST</td> <td>SCB8-20</td> <td>HNTT8-8</td> </tr> <tr> <td>SEU</td> <td>CBM8-20</td> <td>HNTU8-8</td> </tr> <tr> <td>SSU</td> <td>SCB8-20</td> <td>SHNTU8-8</td> </tr> <tr> <td>SEP</td> <td>CBM8-20</td> <td>HNTP8-8</td> </tr> <tr> <td>SSP</td> <td>SCB8-20</td> <td>SHNTP8-8</td> </tr> <tr> <td>SEC</td> <td>HCBST8-24</td> <td>HNTT8-8</td> </tr> </tbody> </table>	Code	Screws	Nuts	SET	CBM8-20	HNTT8-8	SST	SCB8-20	HNTT8-8	SEU	CBM8-20	HNTU8-8	SSU	SCB8-20	SHNTU8-8	SEP	CBM8-20	HNTP8-8	SSP	SCB8-20	SHNTP8-8	SEC	HCBST8-24	HNTT8-8	HBKTST8
	Code		Screws	Nuts																							
	SET		CBM8-20	HNTT8-8																							
	SST		SCB8-20	HNTT8-8																							
	SEU		CBM8-20	HNTU8-8																							
	SSU		SCB8-20	SHNTU8-8																							
	SEP		CBM8-20	HNTP8-8																							
	SSP		SCB8-20	SHNTP8-8																							
	SEC		HCBST8-24	HNTT8-8																							
	SEU (Pre-assy. Insertion Spring Nuts)			HBKTS8																							
SSU (Pre-assy. Insertion Spring Nuts Stainless Steel)		HBKTSB8																									
SEP (Post-assy. Insertion Spring Nuts)		NBLTS8																									
SSP (Post-assy. Insertion Spring Nuts Stainless Steel)		HBLTS8																									
SEC (Washer Integrated Screws Nuts)		HBLTSB8																									
		CHBLTS8																									
		HBLTH8																									

Ⓢ Screws for black anodized parts are HCBMTB (Trivalent Chromate Black). P.2858
Ⓢ Not RoHS compliant when -SET, -SEU or -SEP are specified.