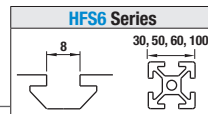


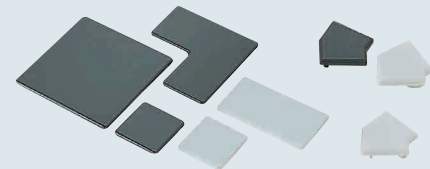
# Extrusion End Caps

For HFS6 Series Aluminum Extrusions 30, 50, 60, 100 Square



**Features:** Standard caps for protecting frame end faces. Alterations are not required. When the cap is hard to insert, tap with a wooden or plastic hammer.

## Extrusion End Caps



Type	Material
HFC GFC	Polyamide
HFCL	Low Density Polyethylene

- Depending on the product, there are items that can be ordered even if there is no color specification. In those cases, the color will be black.
- Changing the shape and number of securing tabs on the frame's cap will make it difficult to remove.
- HFCL does not apply to frames with fixed position wrench holes (P.2866), D-holes (P.2871), and L-holes (P.2874).
- Due to the nature of the material, HFCL may cause dimensional differences when mounting on aluminum frame.

### HFC6-3030

### HFCL6-3030

### HFC6-3060

### HFCL6-3060

### HFC6-3090

### HFC6-606030

### HFC6-6060

### HFC6-6090

### HFC6-60120

### HFC30A6

### HFC45A6

### HFC60A6

### HFCR6-3030

### HFC6-5050

### HFC6-50100

### HFC6-100100

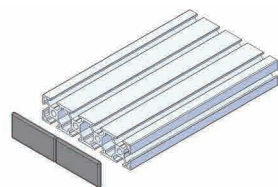
### GFC6-3030

Part Number Type	No.	Color	Applicable Extrusion
HFC6	3030	B (Black)	HFS6-3030
	3060		HFS6-3060
	3090		HFS6-3090
	606030		HFS6-606030
	6060		HFS6-6060
HFCL6	6090	S (Light Gray)	HFS6-6090
	60120		HFS6-60120
	3030		HFS6-3030
HFC30A6			HFS30A6-30
			HFS45A6-30
			HFS60A6-30
HFCR6-3030			HFSR6-3030
			HFS6-5050
HFC6	50100	B (Black)	HFS6-50100
	100100		HFS6-100100
	GFC6		3030

**Part Number Example**  
Part Number - Color  
HFC30A6 - B

## Application Example

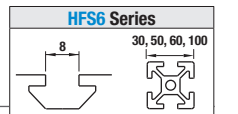
When using Aluminum Extrusion HFS6-30120, please use two pieces of HFC6-3060.



It can be used for all frames of the same shape including the GFS series.

# Three-Sided Caps for Corners / Screw Mounted / End Plates / Plates for High Rigidity

For HFS6 Series Aluminum Extrusions 30, 50, 60, 100 Square



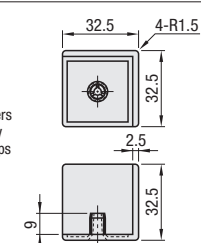
## Three-Sided Caps for Corners



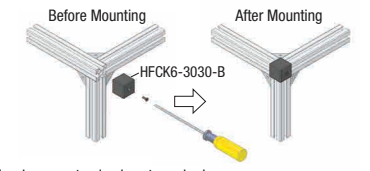
### HFC6K-3030

- The pin shape and numbers of extrusions on caps may be changed to prevent caps from easily falling off.

Material: Polyamide



## Application Example

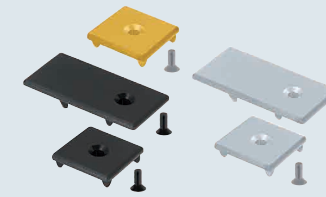


Tapping on extrusion is not required.

Part Number	Color	Accessories	Applicable Extrusion*
HFC6K-3030	B (Black)	HFBMB4-12	HFS6-3030

**Part Number Example**  
Part Number - Color  
HFC6K-3030 - B

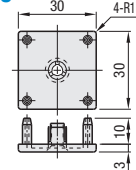
## Screw Mounted



RoHS 10

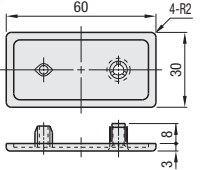
### HFCB6-3030

(Screw Fixing Type)



### HFCB6-3060

(Screw Fixing Type)

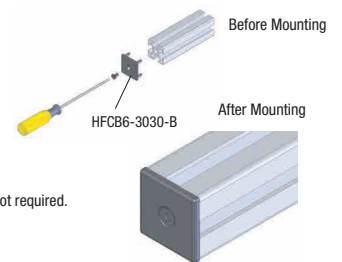


Material: Polyamide (Black, Light Gray, Yellow)

Part Number Type	No.	Color	Applicable Extrusions*
	3060		HFS6-3060

- Flathead countersink screw is included for Screw Mount Type. (Black: HFBMB4-12, Light Gray: SHFBS4-12)
- Yellow Type is only available for 3030.

## Application Example



Tapping on extrusion is not required.

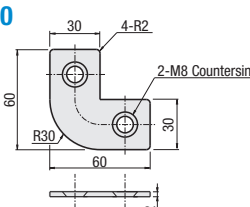
**Part Number Example**  
Part Number - Color  
HFCB6-3030 - B

## End Plates

### HFCR6-606030

RoHS 10

Material: 304 Stainless Steel



Part Number Type	Applicable Screw (Not included)	Applicable Extrusions
HFCR6-606030	SHFBS8-12	HFSR6-606030

- For HFCR6-606030, alteration on the extrusion section and applicable screws are required for mounting. (Screws are not attached.)

## End Plates Mounting for HFSR6-606030

Alterations Code	Hole Machining for End Plate Mounting		
	LTS	RTS	TSW
Spec.	The standard extrusion position is shown below. LTS: Machined on the left end RTS: Machined on the right end TSW: Machined on both ends Ex. LTS		
Applicable Extrusions	HFSR6-606030		
Applicable Screw	SHFBS8-12		

**Part Number Example**  
Part Number  
HFCR6-606030

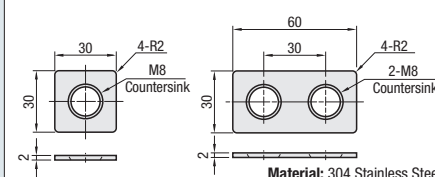
## Plates for High Rigidity Type

### HFCD6-3030

### HFCD6-3060

RoHS 10

Material: 304 Stainless Steel



Part Number Type	No.	Applicable Screw (Not included)	Applicable Extrusion
	3060		GFS6-3060

- Special alteration is required on cross sections of extrusions to mount extrusion end caps. (Refer to P.2875)

**Part Number Example**  
Part Number  
HFCD6-3030