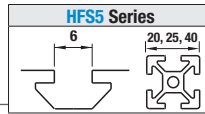


Stopper Integrated Nuts / Pre-Assembly Insertion Spring Nuts

HFS5 Series (Aluminum Extrusions 20, 25, 40 mm Square)

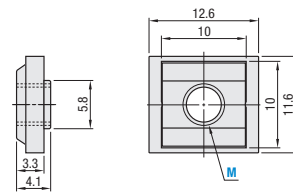


Stopper Integrated Nuts



RoHS 10

HNTE5 SHNTE5

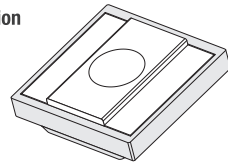


Type	Material			Reference Tightening Torque (N.m)
	Main Body	Stopper	Surface Treatment	
(1) HNTE5	1010 Carbon Steel	Polypropylene	Trivalent Chromate	M 1010 Carbon Steel / 304 Stainless Steel 5 6.8
(2) SHNTE5	304 Stainless Steel	—	—	

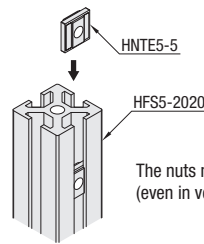
Part Number	M
HNTE5 SHNTE5	3 4 5



Application Example



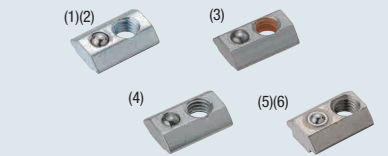
Integrated Pre-Assembly Insertion Nuts and Stoppers.



The nuts maintain their position (even in vertical extrusions).

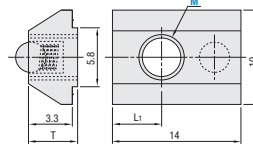
Part Number Example: HNTE5 - M 5

Pre-Assembly Insertion Spring Nuts



RoHS 10

- HNTE5 (1010 Carbon Steel)
- PACK-HNTU5 (1010 Carbon Steel, 100/pkg.)
- HNTUV5 (Thread Locking Adhesive Type, 1010 Carbon Steel)
- HNTUZ5 (Thread Locking Resin Coating Type, 1010 Carbon Steel)
- SHNTU5 (304 Stainless Steel, sintering)
- PACK-SHNTU5 (304 Stainless Steel, 100/pkg.)



Type	Material				Reference Tightening Torque (N.m)
	Body	Ball	Spring	S	
(1) HNTE5 (2) PACK-HNTU5 (3) HNTUV5 (4) HNTUZ5	1010 Carbon Steel	304 Stainless Steel	Spring Steel (ASTM A 228)	Trivalent Chromate	M 1010 Carbon Steel, 304 Stainless Steel (Sintering) 5 6.8
(5) SHNTU5 (6) PACK-SHNTU5	304 Stainless Steel (Sintering)	304 Stainless Steel	304 Stainless Steel	—	

Bulk Packages

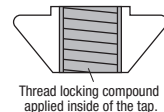
Part Number	M	T	L ₁
PACK-HNTU5 (1010 Carbon Steel)	3 4 5	4.1	4.5
PACK-SHNTU5 (304 Stainless Steel, Sintering)	3 4 5	4.7	3.5

Part Number Example: HNTE5 - M 5

Maintains its position (even in vertical extrusions).
Built-in spring maintains its position. Moves easily in the slot when pressed slightly by hand.



Thread Locking Type



Nuts with thread locker applied on the inside of tap. Reduce loosening caused by vibration at transportation or operation of equipment.

Thread Locking Adhesive: A microencapsulated anaerobic adhesive prevents thread loosening. Note that it requires a hardening time (72 hours at room temperature 25°C). The adhesive property is lost once loosened.

Resin Coating: Resin is coated along the threads. Although the thread locking effect may be less than adhesive type, it can be used repeatedly without hardening time required.

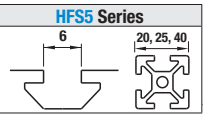
Effect of Thread Locker (Reference)

Loosening torque values are for reference. Difference may occur depending on the clearances between bolts and nuts

Without Thread Locker	Features	Loosening Torque After Tightening (1st time)	Remarks
Without Thread Locker	—	5.2 N.m	—
Thread Locking Adhesive Type	<ul style="list-style-type: none"> Prevents loosening effectively. Thread locking properties are lost once loosened. Requires a hardening time for adhesives (72 hours at room temperature 25°C) after tightening. 	7.6 N.m	Test Conditions: Measured Value (HNTU5-5) when a bolt is loosened after drying for 72 hours at room temperature (25°C), after tightened at 6.8 N.m.
Thread Locking Resin Coating Type	<ul style="list-style-type: none"> Can be used repeatedly. (Thread locking effect decreases after repeated use.) Thread locking effect is immediately seen right after tightening. 	6.5 N.m	Thread locking effect decreases after repeated use. 5th loosening torque: 6.2 N.m Measurement at HNTU5-5

Pre-Assembly Insertion Nuts / Stoppers for Aluminum Insertion

HFS5 Series (Aluminum Extrusions 20, 25, 40 mm Square)



Pre-Assembly Insertion Lock Nuts

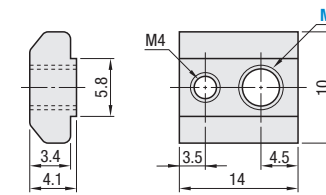


Material: 1010 Carbon Steel
Surface Treatment: Trivalent Chromate

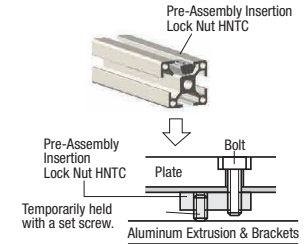
Part Number	M	Accessories
HNTC5	5	M4 Set Screw for Locking 1 pc

HNTC5

Reference Tightening Torque (N.m)	
M	1010 Carbon Steel
5	6.8



Application Example
The position of post-assembly insertion lock nuts can be fixed temporarily with the set screw.



Part Number Example: HNTC5 - M 5

Pre-Assembly Insertion Short Nuts

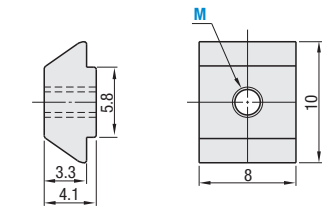


Material: 1010 Carbon Steel Equivalent
Surface Treatment: Trivalent Chromate Plating

RoHS 10

HNTJ5 PACK-HNTJ5

Reference Tightening Torque (N.m)	
M	1010 Carbon Steel Equivalent
5	6.8



Overall length is shorter than the Pre-Assembly Insertion Nuts HNTT. Convenient for installing sensors or other components closely in combination.
Stopper is not included.

Part Number	M
HNTJ5 PACK-HNTJ5	3 4 5

Part Number Example: HNTJ5 - M 5

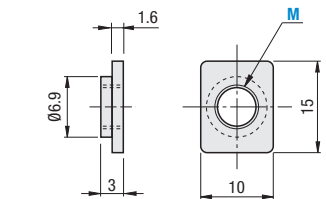
Pre-Assembly Insertion Square Nuts



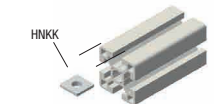
Material: Low Carbon Steel
Surface Treatment: Trivalent Chromate

Part Number	M
HNKK5	3 4 5

HNKK5



Application Example
Pre-Assembly Insertion Nut



Part Number Example: HNKK5 - M 5

Metal Stoppers for Pre-Assembly Insertion Square Nuts

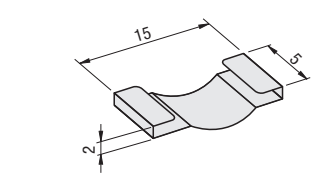


Material: 301 Stainless Steel

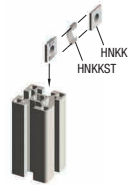
Part Number	Applicable Pre-Assembly Insertion Nut
HNKKST5	HNKK5

100 pcs. per package

HNKKST5



Application Example



Part Number Example: HNKKST5