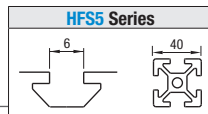


Extruded Brackets for 2 Slots

Slot Type: HFS5 Series (Aluminum Extrusions 20, 25, 40 mm Square)



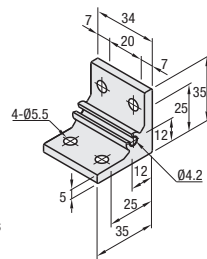
Features: Extrusions with 2-slots (HFS5-4040, etc.) can be connected with one bracket.

Thick Brackets



Type	Material	Surface Treatment
NBLTD5	6063-T5 Aluminum Alloy	Clear Anodize
HBLTD5	A6N01SS-T5 Aluminum Alloy	Black Anodize
HBLTDB5		Black Anodize
CHBLTD5		Clear Paint (Anodize + Clear Paint)

NBLTD5
HBLTD5
HBLTDB5
(Black Anodize)
CHBLTD5
(Clear Coating)



Both sides and screw holes of NBLTD5 is not anodized.

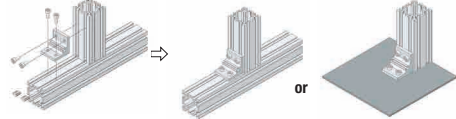
Part Number	Mass (g)	Applicable Screw / T Nut			Allowable Load (N)
		Screw	Qty.	T Nut	
NBLTD5	36	CBM5-10	4	HNNT5-5	1470
HBLTD5					
HBLTDB5 (Black Anodize)					
CHBLTD5 (Clear Coating)					



Application Example

Example of HBLTD Connection

Can be used for extrusion connection or plate mounting.



*For repairing black anodizing, refer to P.2965

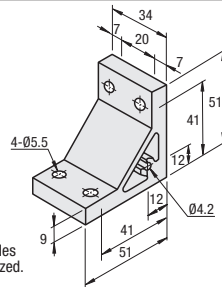
Features: Increased strength Thick Brackets. Recommended for enhancing the strength without increasing procedural steps.

Ultra Thick Brackets



Type	Material	Surface Treatment
NBLUD5	A6N01SS-T5 Aluminum Alloy	Clear Anodize
HBLUD5		Black Anodize
HBLUDB5		Black Anodize

NBLUD5
HBLUD5
HBLUDB5
(Black Anodize)



Both sides and screw holes of NBLUD5 are not anodized.

Part Number	Mass (g)	Applicable Screw / T Nut			Allowable Load (N)
		Screw	Qty.	T Nut	
NBLUD5	75	CBM5-14	4	HNNT5-5	1470
HBLUD5					
HBLUDB5 (Black Anodize)					

Inner Diameter Selectable Steel Pipes

*For repairing black anodizing, refer to P.2965

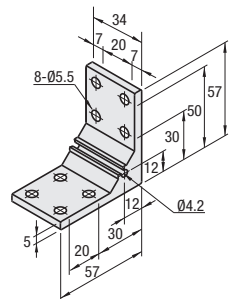
Features: Brackets for 2-slots with twice as many screws as HBLTD5. Extrusions can be connected more securely.

Thick Brackets



Type	Material	Surface Treatment
HBLTDW5	A6N01SS-T5 Aluminum Alloy	Clear Anodize

HBLTDW5



Part Number	Mass (g)	Applicable Screw / T Nut			Allowable Load (N)
		Screw	Qty.	T Nut	
HBLTDW5	59	CBM5-10	8	HNNT5-5	2156

Part Number Example: Part Number HBLTD5

Part Number Alterations: Part Number HBLTD5 - (C / SET / SST / SEU / SSU / SEP / SSP / SEC) SET

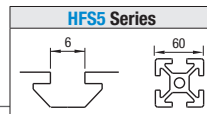
Alterations	Code	Spec.	Applicable Brackets
Mounting Holes for Cover	C	Adds taps on a bracket for cover mounting. (M5 on Both Sides, Depth 15 mm) (Mounting screw HCBM)	NBLTD5
			HBLTD5
			CHBLTD5
			HBLTDW5
			NBLUD5
			HBLUD5

Alterations	Code	Spec.	Applicable Brackets	Available Types								
				SET	SST	SEU	SSU	SEP	SSP	SEC		
Applicable Screws and Nuts Set	SET SST (Stainless Steel) SEU (Pre-Assy. Insertion Spring Nuts) SSU (Pre-Assy. Insertion Spring Nuts Stainless Steel) SEP (Post-Assy. Insertion Spring Nuts) SSP (Post-Assy. Insertion Spring Nuts Stainless Steel) SEC (Captured Washer Screws Nuts)	Supplies a set of applicable screws and nuts for fixing the bracket to an extrusion. (Ex.) When HBLTD5 is specified, Code Screws Nuts SET CBM5-10 HNNT5-5 SST SCB5-10 HNNTBS5-5 SEU CBM5-10 HNTU5-5 SSU SCB5-10 SHNTU5-5 SEP CBM5-10 HNTP5-5 SSP SCB5-10 SHNTP5-5 SEC HCBST5-12 HNNT5-5	NBLTD5	•	•	•	•	•	•	•	•	
			HBLTD5	•	•	•	•	•	•	•	•	
			HBLTDB5	•	•	•	•	•	•	•	•	•
			CHBLTD5	•	•	•	•	•	•	•	•	•
			HBLTDW5	•	•	•	•	•	•	•	•	•
			HBLUD5	•	•	•	•	•	•	•	•	•
			HBLUDB5	•	•	•	•	•	•	•	•	•

Ⓢ Screws for black anodized parts are HCBMTB (Trivalent Chromate Black). P.2965
Ⓢ Not RoHS compliant when -SET, -SEU or -SEP other than black anodized parts is specified.

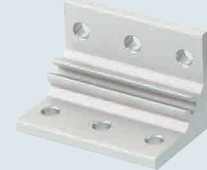
Extruded Brackets for 3 Slots

Slot Type: HFS5 Series (Aluminum Extrusions 20, 25, 40 mm Square)



Features: Extrusions with 3-slots (HFS5-2060, etc.) can be connected with one bracket.

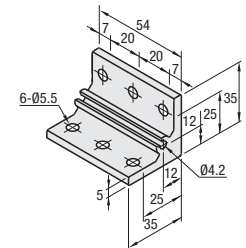
Thick Brackets



Type	Material	Surface Treatment
NBLTT5	6063-T5 Aluminum Alloy	Clear Anodize
HBLTT5	A6N01SS-T5 Aluminum Alloy	

NBLTT5
HBLTT5

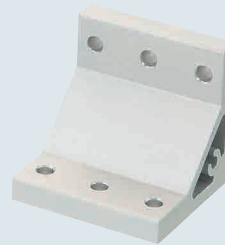
Both sides and screw holes of NBLTT5 are not anodized.



Part Number	Mass (g)	Applicable Screw / T Nut			Allowable Load (N)
		Screw	Qty.	T Nut	
NBLTT5	60	CBM5-10	6	HNNT5-5	1960
HBLTT5					

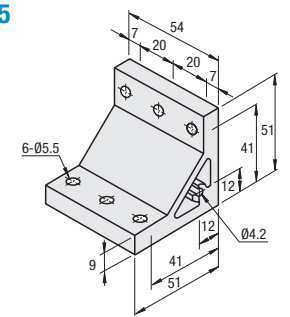
Features: Numbers of screws are the same as HBLTT5. Extrusions can be connected more securely.

Ultra Thick Brackets



Type	Material	Surface Treatment
HBLUT5	A6N01SS-T5 Aluminum Alloy	Anodize

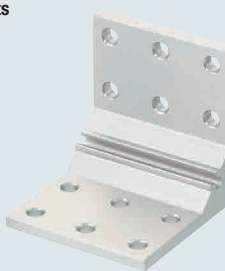
HBLUT5



Part Number	Mass (g)	Applicable Screw / T Nut			Allowable Load (N)
		Screw	Qty.	T Nut	
HBLUT5	119	CBM5-14	6	HNNT5-5	1960

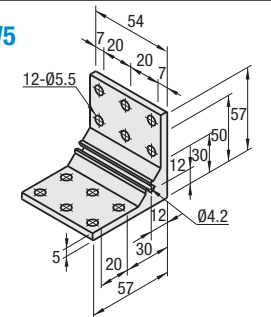
Features: Brackets for 3-slots with twice as many screws as HBLUT5. Extrusions can be connected more securely.

Thick Brackets



Type	Material	Surface Treatment
HBLTTW5	A6N01SS-T5 Aluminum Alloy	Clear Anodize

HBLTTW5



Part Number	Mass (g)	Applicable Screw / T Nut			Allowable Load (N)
		Screw	Qty.	T Nut	
HBLTTW5	96	CBM5-10	12	HNNT5-5	2940

Part Number Example: Part Number HBLTT5

Part Number Alterations: Part Number HBLTT5 - (C / SET / SST / SEU / SSU / SEP / SSP / SEC) SET

Alterations	Code	Spec.	Applicable Brackets
Mounting Holes for Cover	C	Adds taps on a bracket for cover mounting. (M5 on Both Sides, Depth 15 mm) (Mounting screw P.2861 HCBM)	HBLTT5
			HBLUT5
			HBLTTW5

Alterations	Code	Spec.	Applicable Screws and Nuts Set	
			Screws	Nuts
Applicable Screws and Nuts Set	SET SST (Stainless Steel) SEU (Pre-Assy. Insertion Spring Nuts) SSU (Pre-Assy. Insertion Spring Nuts Stainless Steel) SEP (Post-Assy. Insertion Spring Nuts) SSP (Post-Assy. Insertion Spring Nuts Stainless Steel) SEC (Captured Washer Screws Nuts)	Supplies a set of applicable screws and nuts for fixing the bracket to an extrusion. (Ex.) When HBLTT5 is specified, Code Screws Nuts SET CBM5-10 HNNT5-5 SST SCB5-10 HNNTBS5-5 SEU CBM5-10 HNTU5-5 SSU SCB5-10 SHNTU5-5 SEP CBM5-10 HNTP5-5 SSP SCB5-10 SHNTP5-5 SEC HCBST5-12 HNNT5-5	SET	HNNT5-5
			SST	HNNTBS5-5
			SEU	HNTU5-5
			SSU	SHNTU5-5
			SEP	HNTP5-5
			SSP	SHNTP5-5
			SEC	HNNT5-5

Ⓢ Screws for black anodized parts are HCBMTB (Trivalent Chromate Black). P.2965
Ⓢ Not RoHS compliant when -SET, -SEU or -SEP other than black anodized parts is specified.