

# Rubber Bumpers

Configurable / With Counterbore Hole / L Selectable

## Rubber Bumpers - Configurable



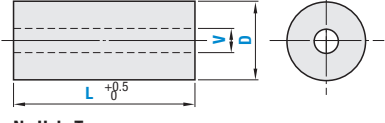
RoHS 10

Through Hole Type	No Hole Type	Material	Hardness	Color
<b>RBXN</b>	<b>RBCXN</b>	Nitrile Rubber (NBR Nitrile Rubber)	Shore A70	Black
<b>RBXC</b>	<b>RBCXC</b>	Chloroprene Rubber (CR)	Shore A65	Black
<b>RBXU</b>	<b>RBCXU</b>	Low Elasticity Rubber (HANENITE®GP-35LE)	Shore A35	Black
<b>RBXS</b>	<b>RBCXS</b>	Silicon Rubber (SI)	Shore A70	Light Gray
<b>RBXA</b>	<b>RBCXA</b>	Silicon Rubber (SI)	Shore A50	Milky White
<b>RBXF</b>	<b>RBCXF</b>	Fluoro Rubber (FPM)	Shore A80	Black

HANENITE® is a registered trademark of Naigai Rubber Industry Co., Ltd.  
 The milky white color of silicone rubber shore A50 is translucent.

D Tolerance		V Tolerance		Thickness Condition	
D	Tolerance	V	Tolerance	L	V
6-40	±0.5	30 or Less	±0.5	L ≤ 30	V ≤ D-6
41-60	±0.6	31-50	±0.7	L > 30	V ≤ D-10

## Through Hole Type



## No Hole Type



The tolerances are verified at 23°C ± 2 and 40-80% humidity.



**Part Number Example**  
**RBXS - D28 - L30 - V12**

The thickness of Through Hole Type (D-V)/2 is restricted by L. Refer to the table (thickness condition) in the figure. If V=2, L ≤ 30.  
 \* L ≤ 30 for RBXU, RBCXU, RBXS, RBCXS, RBCXA, RBXF, RBCXF

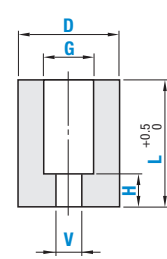
## Rubber Bumpers - With Counterbore Hole



RoHS 10

Type	Material	Hardness	Color
<b>RBZN</b>	Nitrile Rubber (NBR Nitrile Rubber)	Shore A70	Black
<b>RBZC</b>	Chloroprene Rubber (CR)	Shore A65	Black
<b>RBZU</b>	Low Elasticity Rubber (HANENITE®GP-35LE)	Shore A35	Black
<b>RBZS</b>	Silicon Rubber (SI)	Shore A70	Light Gray
<b>RBZA</b>	Silicon Rubber (SI)	Shore A50	Milky White
<b>RBZF</b>	Fluoro Rubber (FPM)	Shore A80	Black
<b>RBZAM</b>	Amber Color Rubber	Shore A45	Amber Color

The milky white color of silicone rubber shore A50 is translucent.



D Tolerance		V / H / G Tolerance		
D	Tolerance	V	H	G
40 or Less	±0.5	±0.5	±0.5	±0.5
40-60	±0.7	±0.7	±0.7	±0.6

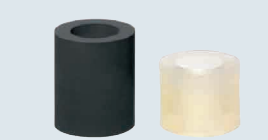
When L ≤ 30, V ≤ G-4  
 When L > 30, V ≤ G-6

Part Number	1 mm Increment					Available Types				
	D	V	H	G	L	RBZN RBZC	RBZU	RBZS RBZA	RBZF	RBZAM
<b>RBZN</b> Nitrile Rubber	11-15	3-10	3 ≤ H < L	7-53	G ≤ D-4	6-30	.	.	.	.
<b>RBZC</b> Chloroprene Rubber	16-30	5-16	5 ≤ H < L	7-54	G ≤ D-6	31-50	.	.	.	.
<b>RBZU</b> Low Elasticity Rubber						6-30	.	.	.	.
<b>RBZS</b> Silicon Rubber (SI Shore A70)						31-50	.	.	.	.
<b>RBZA</b> Silicon Rubber (SI Shore A50)						10-30	.	.	.	.
<b>RBZF</b> Fluoro Rubber (FPM)						31-50	.	.	.	.
<b>RBZAM</b> Amber Color Rubber						25-30	.	.	.	.
						31-50	.	.	.	.

Amber Color Rubber Type is available up to L20.

**Part Number Example**  
**RBZAM - D22 - V5 - H10 - G12 - L38**

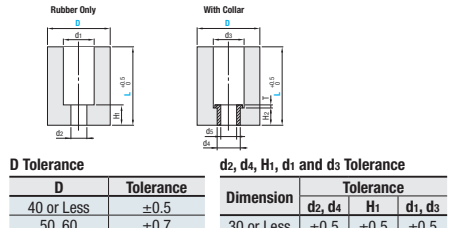
## Rubber Bumpers - L-Selectable



RoHS 10

Rubber Only	With Collar			Material	Hardness	Color
	Black Oxide	Electroless Nickel Plating	304 Stainless Steel			
<b>RBZNC</b>	<b>RBZNC-C</b>	<b>RBZNC-M</b>	<b>RBZNC-S</b>	Nitrile Rubber (NBR Nitrile Rubber)	Shore A70	Black
<b>RBZCK</b>	<b>RBZCK-C</b>	<b>RBZCK-M</b>	<b>RBZCK-S</b>	Chloroprene Rubber (CR)	Shore A65	Black
<b>RBZUK</b>	<b>RBZUK-C</b>	<b>RBZUK-M</b>	<b>RBZUK-S</b>	Low Elasticity Rubber (HANENITE®GP-35LE)	Shore A35	Black
<b>RBZSK</b>	<b>RBZSK-C</b>	<b>RBZSK-M</b>	<b>RBZSK-S</b>	Silicon Rubber (SI)	Shore A70	Light Gray
<b>RBZAK</b>	<b>RBZAK-C</b>	<b>RBZAK-M</b>	<b>RBZAK-S</b>	Silicon Rubber (SI)	Shore A50	Milky White
<b>RBZFK</b>	<b>RBZFK-C</b>	<b>RBZFK-M</b>	<b>RBZFK-S</b>	Fluoro Rubber (FPM)	Shore A80	Black

The milky white color of silicone rubber shore A50 is translucent.



D Tolerance		d2, d4, H1, d1 and d3 Tolerance		
D	Tolerance	Dimension	d2, d4	H1, d1, d3
40 or Less	±0.5	30 or Less	±0.5	±0.5
50, 60	±0.7		±0.5	±0.5



**Part Number Example**  
**RBZCK25 - 20 - M6**

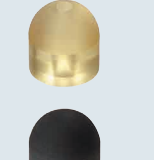
Part Number	Type	D	L	(M) Applicable Screw	Rubber Only H1	With Collar					Collar Type Available Types		
						H2	Applicable Collar No.	RBZNC	RBZUK	RBZSK	RBZAK	Black Oxide RBZ_K-C	Electroless Nickel Plating RBZ_K-M
12	12	12	M3	5	3	.	.	.	.	.	.	.	
15	12 15	15	M4	7	4	.	.	.	.	.	.	.	
20	20 25	20	M5	8	5	.	.	.	.	.	.	.	
25	20 25	25	M6	10	6	.	.	.	.	.	.	.	
30	20 25 30	30	M8	12	8	.	.	.	.	.	.	.	
40	30 40 50	40	M10	15	10	.	.	.	.	.	.	.	
50	30 40 50	50	M12		12	.	.	.	.	.	.	.	
60	30 40 50	60	M12		12	.	.	.	.	.	.	.	

# Urethane / Rubbers

Spherical / Tapered Tip

Bumpers with spherical and tapered tip are available in a short delivery time. Hole length is configurable for Through Hole Type. Amber color rubber which provides an excellent mechanical strength and abrasion resistance, highly elastic and tensile is added.

## Urethane / Rubbers - Spherical Tip



RoHS 10

Through Hole Type	No Hole Type	Material	Hardness	Color
<b>UTRS</b>	<b>CXTRS</b>	Ether Polyurethane	Shore A95	Natural Color
<b>UTRH</b>	<b>CXTRH</b>		Shore A90	
<b>UTRM</b>	<b>CXTRM</b>		Shore A70	
<b>UTRL</b>	<b>CXTRL</b>		Shore A50	
<b>UBFN</b>	<b>CXBFN</b>	Nitrile Rubber (NBR Nitrile Rubber)	Shore A70	Black
<b>UBFS</b>	<b>CXBFS</b>		Silicon Rubber	Shore A70
<b>UBFU</b>	<b>CXBFU</b>	Low Elasticity Rubber (HANENITE®GP-35LE)	Shore A35	Black
<b>UBFF</b>	<b>CXBFF</b>	Fluoro Rubber	Shore A80	Black

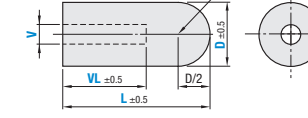
V Tolerance	
V	Tolerance
30 or Less	±0.2
31-86	±0.5

Thickness Condition	
L	V
L ≤ 30	V ≤ D-4
L > 30	V ≤ D-6

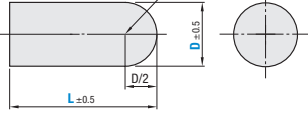
Conditions of L ≥ D/2

HANENITE® is a registered trademark of Naigai Rubber Industry Co., Ltd.  
 Amber Color Rubber is now available online.

## Through Hole Type



## No Hole Type



For Through Hole Type, through hole will be machined when VL dimension is not specified.  
 Specification of VL dimension is required. Through hole can be provided, but the bore cannot be stopped at SR.

## Urethane Configurable Type

Part Number (x Material Multiplier)	1 mm Increment			
	D	L	Through Hole Type V	Through Hole Type VL
Shore A95	6-15	10-50 L ≥ D/2	2-11	5-50 VL=L or VL ≤ L-D/2
Shore A90	16-20		4-16	
Shore A70	21-30		6-26	
Shore A50	31-40		6-36	
	41-50		6-46	

The thickness of Through Hole Type (D-V)/2 is restricted by L. Refer to the table (Thickness Condition) in the figure.

## Rubber Configurable Type

Part Number	1 mm Increment			
	D	L	Through Hole Type V	Through Hole Type VL
Nitrile Rubber	6-15	10-30 L ≥ D/2	2-11	5-30 VL=L or VL ≤ L-D/2
Silicon Rubber	16-25		7-21	
Low Elasticity Rubber	6-15		2-11	
Fluoro Rubber	6-15		2-11	

Bumpers with spherical and tapered tip are available in a short delivery time. Hole length is configurable for Through Hole Type.

## Urethane / Rubbers - Tapered Tip



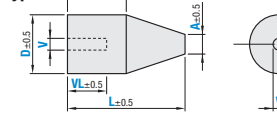
RoHS 10

Through Hole Type	No Hole Type	Material	Hardness	Color
<b>UTTS</b>	<b>CXTTS</b>	Ether Polyurethane	Shore A95	Natural Color
<b>UTTH</b>	<b>CXTTH</b>		Shore A90	
<b>UTTM</b>	<b>CXTTM</b>		Shore A70	
<b>UTTL</b>	<b>CXTTL</b>	Nitrile Rubber (NBR Nitrile Rubber)	Shore A50	Black
<b>UTBFN</b>	<b>CXTBFN</b>		Shore A70	

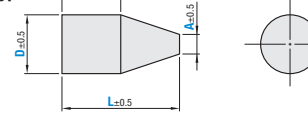
V Tolerance	
V	Tolerance
30 or Less	±0.2
31-52	±0.5

For hole type, through hole will be machined when VL dimension is not specified.

## Through Hole Type



## No Hole Type



Highly Abrasion Resistant Urethane and Amber Color Rubber are now available online.

Part Number (x Material Rate)	1 mm Increment			
	D	A (A ≤ D-2)	L	Through Hole Type C
Shore A95	6-15	2-13	10-30	1-29 C < L
Shore A90	16-30	2-28		
Shore A70	31-45	2-43		
Shore A50	46-60	2-58		
Shore A70				



**Part Number Example**  
**UTRS - D20 - L40 - V10 - VL30**  
**CXBFU - D10 - L15**

**Part Number Example**  
**UTTS - D15 - A13 - L15 - C10 - V5 - VL10**  
**CXTTH - D20 - A14 - L30 - C15**