

Brackets for Stands

Side Mounting Casting Type / Side Mounting Casting Dowel Hole Type / Side Mounting Slotted Hole Type

Feature: Up to 67% price reduction by cast-producing compared to the standard products (left-hand page).

Brackets for Stands – Side Mounting Casting Type



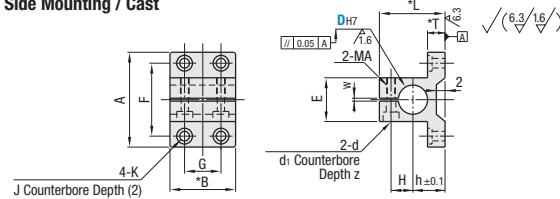
Brackets for Stands – Side Mounting Casting Dowel Hole



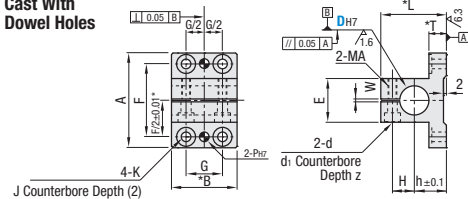
RoHS 10

Side Mounting / Cast	Type	Material	Surface Treatment	Accessories	
				Side Mounting / Cast	Side Mounting Casting Dowel Hole
CLTBD	CLPBD	65-45-12 S.G. Cast Iron	Black Oxide or Phosphate Conversion Coating	Hex Socket Head Cap Screws	Hex Socket Head Cap Screws Dowel Pins
CLTMD	CLPMD		Electroless Nickel Plating	Hex Socket Head Cap Screws (Stainless)	Hex Socket Head Cap Screws (Stainless Steel) Dowel Pins

Side Mounting / Cast



Side Mounting / Cast With Dowel Holes



ⓘ Accessories: For black oxide and phosphate conversion coated products, CB P.2378, for electroless nickel plated products, SCB P.2379 screws are included. For dowel pin hole type, P.2449 are included.

Tolerance of Casting Products
A, B, L, E and T dimensions are for casting tolerance.

Casting Tolerance Class CT12 for JISB0403

Over	or Less	Tolerance
10	16	±2.2
17	25	±2.3
26	40	±2.5
41	63	±2.8
64	100	±3.0
101	160	±3.5

Accessories: Dowel Pins

D _{H7}	Included Dowel Pins
20	MSTM6-20
25	MSTM8-20
30	
35	
40	MSTM10-30
50	

* ±0.01 of F / 2 part is only applicable to hole pitch tolerance of dowel holes and not applicable to pitch of through holes.
* B ends are milled for aesthetics.
* L and T have 2° of draft for cast-mold extraction.
ⓘ Antirust oil is included with black oxide products, phosphate conversion coating and electroless nickel plated products.

Part Number	Type	D _{H7}	A	B	L	T	F	G	K	J	h	H	E	d	d ₁	Z	MA	W	With Dowel Holes		Included Screw	
																			P _{H7}	Tolerance		
CLTBD	20	+0.021	65	45	45	12	50	25	6.6	13	22	15	30	6.6	11	6.5	M6	2	6	+0.012	M6-20, 2 pcs.	
CLTMD	25	0	80	60	53		60	36	9	18	27	18	35						8	+0.015	M6-25, 2 pcs.	
CLPBD	30	+0.025	90	60	60		70	36	9	18	30	21	45	9	14	9	M8	3	10	0	M8-35, 2 pcs.	
CLPMD	35	0	105	80	68	15	80	40	11	20	35	24	50									M8-40, 2 pcs.
	40		115	80	76		90	40	11	20	38	27	60	11	17.5	11	M10	3				M10-45, 2 pcs.
	50		135	100	87	18	105	50	14	24	43	33	70									M10-50, 2 pcs.

ⓘ The tolerance and perpendicularity of DH7 is before slitting. ⓘ Recommended tolerances of fitting shafts: g6, f8. For stand posts, see P.2230-2231. Tightening with a long wrench is recommended.
ⓘ D=30 or less are applicable to CLPBD and CLPMD.

Part Number Example	Part Number
	CLTBD20
	CLPMD30

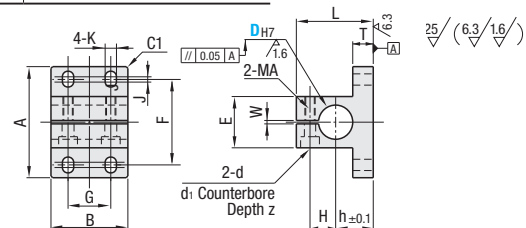
Brackets for Stands – Side Mounting Slotted Hole Type



RoHS 10

Type	Material	Surface Treatment	Accessories
CLNB	1018 Carbon Steel or Equivalent	Black Oxide	Hex Socket Head Cap Screws
CLNM		Electroless Nickel Plating	Hex Socket Head Cap Screws (Stainless Steel Equivalent)
CLNA	Aluminum Alloy	Clear Anodize	Hex Socket Head Cap Screws (Stainless Steel Equivalent)
CLNS	304 Stainless Steel	—	—

ⓘ Accessories: For CLNB P.2378, for others P.2379



Part Number	Type	D _{H7}	A	B	L	T	G	F	J	K	h	H	E	d	d ₁	Z	MA	W	Included Screw		
																			P _{H7}	Tolerance	
CLNB (D20-30, 40)	20	+0.021	65	45	45	12	25	47.5	5.5	6.6	22	15	30	6.6	11	6.5	M6	2		M6-20, 2 pcs.	
CLNM (D20-50)	25	0	80	60	53		36	57.5	7.5	9	27	18	35							M6-25, 2 pcs.	
CLNA (D20, 25, 50)	30	+0.025	90	60	60		67.5	36	9	18	30	21	45	9	14	9	M8	3		M8-35, 2 pcs.	
CLNS (D20, 25)	35	0	105	80	68	15	40	77.5	9.5	11	35	24	50							M8-40, 2 pcs.	
	40		115	80	76		87.5	40	11	20	38	27	60	11	17.5	11	M10	3			M10-45, 2 pcs.
	50		135	100	87	18	102.5	50	12.5	14	43	33	70								M10-50, 2 pcs.

ⓘ The tolerance and perpendicularity of DH7 is before slitting. ⓘ Recommended tolerances of fitting shafts: g6, f8. For stand posts, see P.2230-2231. Tightening with a long wrench is recommended.

Part Number Example	Part Number
	CLNB25
	CLNA20

Bracket for Stands

Side Mounting Compact Type / Non-Flanged Side Mounting Type

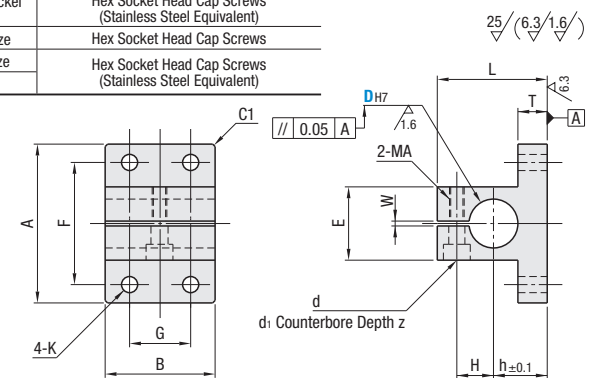
Features: Compact Brackets for Stands 25-30% shorter in height, and approximately 10% narrower in width compared to Standard Side Mounting Type (P.2271).

Brackets for Stands – Side Mounting Compact Type



Type	Material	Surface Treatment	Accessories
CLCB	1018 Carbon Steel or Equivalent	Black Oxide	Hex Socket Head Cap Screws
CLCNM		Electroless Nickel Plating	Hex Socket Head Cap Screws (Stainless Steel Equivalent)
CLCBM	Aluminum Alloy	Black Anodize	Hex Socket Head Cap Screws
CLCAM		Clear Anodize	Hex Socket Head Cap Screws (Stainless Steel Equivalent)
CLCS	304 Stainless Steel	—	—

ⓘ Accessories: CB screws (P.2378) and SCB screws (P.2379) are included with Black Oxide / Black Anodize and the other types, respectively.



Part Number	Type	D _{H7}	A	B	L	T	F	G	K	h	H	E	d	d ₁	Z	MA	W	Included Screws	
																		P _{H7}	Tolerance
CLCB	20	+0.021	60	30	45	12	45	18	6.6	22	15	30	6.6	11	6.5	M6	2		M6-12, 1 pc.
CLCNM	25	0	73	45	53		54	30	9	27	18	35							M6-25, 1 pc.
CLCBM	30	+0.025	83	45	60		64	30	9	30	21	45	9	14	9	M8	2		M8-35, 1 pc.
CLCAM	35	0	94	60	68	15	72	35	11	35	24	50							M8-40, 1 pc.
CLCS	40		104	60	76		82	35	11	38	27	60	11	17.5	11	M10	3		M10-45, 1 pc.
	50		118	75	87	18	94	45	14	43	33	70							M10-50, 1 pc.

ⓘ The tolerance and perpendicularity of DH7 is before slitting. ⓘ Recommended tolerances of fitting shafts: g6, f8. For Posts, refer to P.2230-2231. Use of a long wrench is recommended for fastening.

Part Number Example	Part Number
	CLCB35

Features: Installation footprint reduced by an average 52% compared to the conventional products on P.2249.

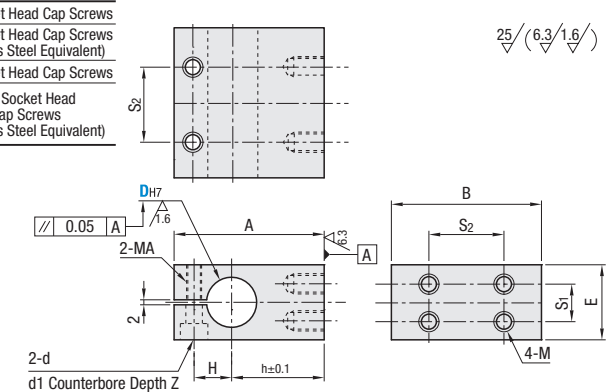
Brackets for Stands – Non-flanged Side Mounting Type



RoHS 10

Type	Material	Surface Treatment	Accessories
CLHB	1018 Carbon Steel or Equivalent	Black Oxide	Hex Socket Head Cap Screws
CLHNM		Electroless Nickel Plating	Hex Socket Head Cap Screws (Stainless Steel Equivalent)
CLHBM	Aluminum Alloy	Black Anodize	Hex Socket Head Cap Screws
CLHAM		Clear Anodize	Hex Socket Head Cap Screws (Stainless Steel Equivalent)
CLHS	304 Stainless Steel	—	—

ⓘ Accessories: CB screws (P.2378) are included with black oxide/black anodized products, and SCB screws (P.2379) are included with the other products, respectively.

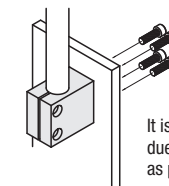


Part Number	Type	D _{H7}	A	B	M	S ₁	S ₂	h	H	E	d	d ₁	Z	MA	Included Screws	
															P _{H7}	Tolerance
CLHB	10	+0.015	35	35	M4	10	18	18	10.5	16	5	8	4.5	M4		M6-20, 2 pcs.
CLHNM	12	+0.018	38	35	M5	12	18	20	11.5	19	5.5	9.5	5.5	M5		M6-25, 2 pcs.
CLHBM	15	0	45	40	M6	13	20	25	12.5	23						M8-35, 2 pcs.
CLHAM	20	+0.021	53	45		18	25	30	15	30	30	6.6	11	6.5	M6	
CLHS	25		59	60	M8	17	36	33	18	35						M10-45, 2 pcs.
	30		67	60		29	37	21	45	21	45	9	14	9	M8	

ⓘ The tolerance and perpendicularity of DH7 is before slitting. ⓘ Recommended tolerances of fitting shafts: g6, f8. For stand posts, see P.2230-2231. Tightening with a long wrench is recommended.
ⓘ D=20-30 are only for CLHBM, CLHAM and CLHS.

Part Number Example	Part Number
	CLHB20
	CLHBM30

Application Example



It is useful when tapping is difficult due to weak attachment plates, such as plastic plates or thin plates.