

Device Stands

Side Mounting

Feature: Affordable Stands best for side mounting on transfer lines.

Device Stands – Side Mounting

Set (Posts + Brackets)



Bracket – Single item



Set (Bracket + Post)

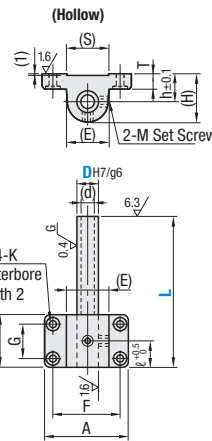
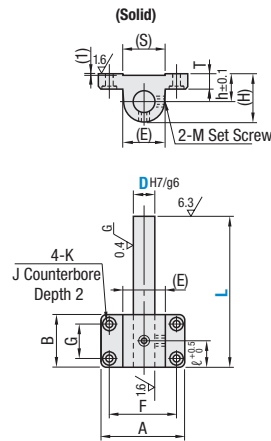
Type		Posts		Brackets		Accessories		
Solid	Hollow	Material	Hardness	Surface Treatment	Material	Surface Treatment	Solid	Hollow
SSTN	SSTA	1045 Carbon Steel or Equivalent	Induction Hardened	—	Cast Iron Class No.35	Black Oxide or Phosphate Conversion Coat	Set Screw	Hex Socket Head Screw
MSSTN	MSSTA	1045 Carbon Steel or Equivalent	—	Electroless Nickel Plating	Cast Iron Class No.35	Black Oxide or Phosphate Conversion Coat	Set Screw	Hex Socket Head Screw
SSTNM	SSTAM	1045 Carbon Steel or Equivalent	Induction Hardened	Electroless Nickel Plating	Cast Iron Class No.35	Electroless Nickel Plating	Set Screw	Hex Socket Head Screw Cap (P2230)
MSSTNM	MSSTAM	1045 Carbon Steel or Equivalent	—	Electroless Nickel Plating	Cast Iron Class No.35	Electroless Nickel Plating	Set Screw	Hex Socket Head Screw Cap (P2230)
SSSTNM	—	304 Stainless Steel	—	—	—	—	—	—

* Case Induction Hardened (Post): 58 HRC min., Depth 1.0–1.5

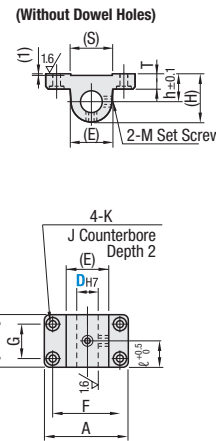
* No Electroless Nickel Plating at ends and grooves of posts.

* For Hex Socket Head Cap Screws, a black oxide bracket matches a black oxide screw, and an electroless nickel plating bracket matches a trivalent chromate screw.

Set (Posts + Brackets)



Bracket Only



$\sqrt{(6.3/1.6/0.4/0.6)}$

Part Number		L 1 mm Increment	A	B	(E)	(S)	F	G	(H)	T	ℓ	h	K	(J)	M	(d)	Accessories Hex Socket Head Cap Screws (Available as Set Only)				
Type	D ₉₆																				
Set	Bracket Only	10	50–250	58	35	26	26	42	19	28	12	18	15	4.5	11	M4	6.0	M4-20 x 4 pcs.			
		12	50–300	64	35	28	28	47	18	30		16	5.5	13				M5-20 x 4 pcs.			
		15	75–350	72	40	31	31	52	20	33.5		20	6.6	15	M5	10.0		M6-25 x 4 pcs.			
		(Solid) SSTN MSSTN SSTNM MSSTNM SSSTNM	(Hollow) SSTA MSSTA SSTAM MSSTAM	SSTF SSTFM	20	75–400	82	45	40	40	62	25	42	12	25	22	6.6	15	M5	11.7	M6-25 x 4 pcs.
					25	75–450	100	60	49	49	75	36	51.5		27	9	18	M6	15.2		M8-25 x 4 pcs.
					30	100–450	106	80	54	54	80	40	57	30	9	18	M6	16.0		M8-25 x 4 pcs.	
					35	125–500	118	80	65	65	90	40	67.5	35	11	20	M8	20.1		M10-35 x 4 pcs.	
					40	150–500	125	100	70	70	95	40	73	40	11	20	M8	22.7		M10-35 x 4 pcs.	
		50	200–600	140	100	80	80	106	50	83	50	14	24	M10	30.8		M12-35 x 4 pcs.				

Part Number Example: MSSTN30 - 300, SSTF20

Brackets for Stands

Flanged Economy / Standard Type

Feature: Affordable Precision Casting Brackets for Stands

Brackets for Stands – Flanged Economy

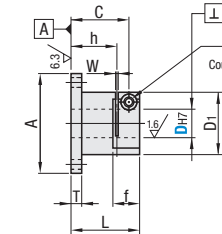


RoHS 10

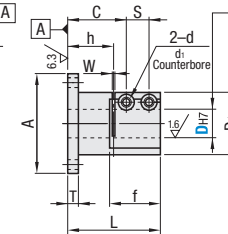
Type		Material	Surface Treatment	Accessories
Compact Flanged	Square Flanged			
TLSB	KLSB	1045 Carbon Steel or Equivalent	Black Oxide	Hex Socket Head Cap Screw
TLSM	KLSM		Electroless Nickel Plating	Hex Socket Head Cap Screw (Stainless Steel)
TLSS	KLSS	304 Stainless Steel	—	—

* Hex socket head cap screws are included with D10-15 (1 pc.) and D20-50 (2 pcs.).

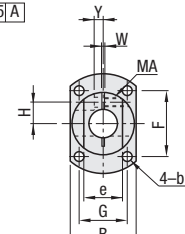
D Dimension 10–15



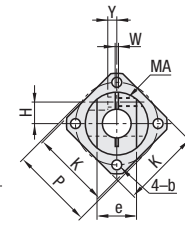
D Dimension 20–50



Compact Flanged



Square Flanged



Part Number		A	B	L	T	D ₁	F	G	b	C	S	H	Y	d	d ₁	MA	h	f	e	W	K	P
Type	D ₉₇																					
Compact Flanged	10	45	28	35	10	26	30	18	4.5	29	—	9.5	3	4.5	8	M4	22	15	14	2	35	36
	12	50	32	—	—	30	34	22	—	—	10.5	3.5	—	—	—	—	—	—	16		38	40
	15	58	38	39	12	35	38	26	5.5	32	—	12.5	4	5.5	9.5	M5	24	17	19	44	46	
	20	64	42	50	12	40	42	30	6.6	33.8	10.5	14	6.5	5.5	9.5	M5	27	25	24	50	52	
	25	80	50	60	12	48	54	35	g	41.5	12	17	8	6.6	11	M6	34	28	29	62	64	
	30	90	60	70	15	58	58	45	—	47	15	21	8	9	14	M8	38	34	34	68	74	
	35	100	66	80	15	64	66	48	—	55	16	23	—	11.5	9	14	M8	44	39	41	76	82
	40	106	72	90	15	70	70	54	—	64	17	26	—	—	—	—	—	53	40	46	80	88
	50	125	88	110	18	85	80	68	14	77.5	21.0	32	12	11	17.5	M10	65	48	58	94	105	

The tolerance and perpendicularity of D₉₇ is before slitting. Recommended tolerances of fitting shafts: g6, f8. For stand posts, see P2230–2231. Tightening with a long wrench is recommended.

D	Available Types					
	TLSB	TLSM	TLSS	KLSB	KLSM	KLSS
10	•	•	•	•	•	•
12	•	•	•	•	•	•
15	•	•	•	•	•	•
20	•	•	•	•	•	•
25	•	•	•	•	•	•
30	•	•	•	•	•	•
35	•	•	•	•	•	•
40	•	•	•	•	•	•
50	•	•	•	•	•	•

Part Number Example: TLSB20

Brackets for Stands – Standard Type



RoHS 10

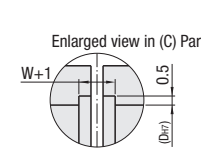
Type	Material	Surface Treatment	Accessories
CLSB	1018 Carbon Steel or Equivalent	Black Oxide	Hex Socket Head Cap Screw
CLSM	—	Electroless Nickel Plating	—
CLSAM	6061 Aluminum Alloy	Clear Anodize	Hex Socket Head Cap Screw (Stainless Steel)
CLSS	304 Stainless Steel	—	—

* Hex socket head cap screws are included with D10-15 (1 pc.) and D20-50 (2 pcs.).

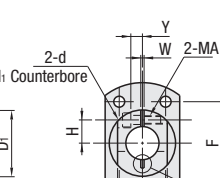
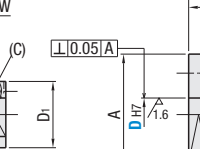
(C) There are deburring marks on.

(B) Some models may have slit grooves in.

D Dimension 10–16



D Dimension 20–50



Part Number		A	B	L	T	D ₁	F	G	b	C	S	H	Y	d	d ₁	MA	h	f	e	W	Included Screws
Type	D ₉₇																				
CLSB CLSM CLSAM CLSS (D10–30)	10	50	33	35	10	30	35	18	4.5	29	—	10	5	4.5	8	M4	22	15	20	2	M4-15, 1 pc.
	12	52	35	—	—	32	37	20	—	—	11	—	—	—	—	—	—	—	22		
	15	58	40	39	12	35	40	24	5.5	32	—	12.5	6	5.5	10	M5	24	17	25		M5-20, 2 pcs.
	20	73	45	50	12	40	50	28	6.6	33.8	10.5	14	7	5.5	9.5	M5	27	25	30	2	M5-20, 2 pcs.
	25	93	55	60	12	50	62	36	9	41.5	12	18	10	6.6	11	M6	34	28	35		
	30	103	65	70	15	60	72	42	—	47	15	21	—	9	14	M8	38	34	45		M8-25, 2 pcs.
	35	108	70	80	15	65	75	45	11	55	16	24	10	9	14	M8	44	39	50		M8-25, 2 pcs.
	40	118	75	90	15	70	78	55	—	64	17	26	13	9	14	M8	53	40	60		M8-30, 2 pcs.
	50	138	90	110	18	85	95	60	14	77.5	21	32	16	11	17.5	M10	65	48	70		M10-35, 2 pcs.

The tolerance and perpendicularity of DH7 is before slitting. D=16 is for CLSB and CLSM only.

Recommended tolerances of fitting shafts: g6, f8. For stand posts, see P2230–2231. Tightening with a long wrench is recommended.

Part Number Example: CLSB20