



# Circular Posts

## One End Tapped / One End Threaded

### Circular Posts – One End Tapped / One End Threaded

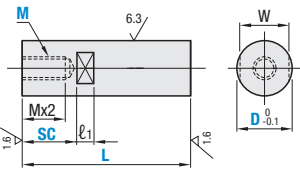


RoHS10

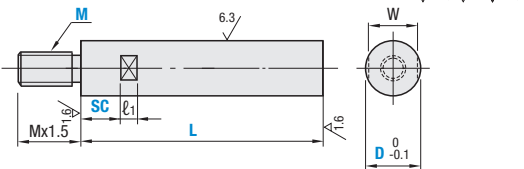
Type		Material	Surface Treatment
One End Tapped	One End Threaded		
NETMN	NETN	1018 Carbon Steel or Equivalent	—
ETKMN	ETKN		Black Oxide
PETMN	PETN		Electroless Nickel Plating
SETMN	SETN	304 Stainless Steel	—

L dim. tolerance is normally:  
 L 15–300 ±0.2  
 L301–600 ±0.3  
 L601–1000 ±0.4

#### One End Tapped



#### One End Threaded, One End Tapped



- The area around the wrench flats may become glossy due to polishing. SC=L-l<sub>1</sub>
- Rust preventative Oil is applied on 1018 Carbon Steel or Equivalent products.

Part Number	Type	D	L		SC	M (Coarse)						W	l <sub>1</sub>
			0.1 mm Increment	0.5 mm Increment									
One End Tapped 1018 Carbon Steel or Equivalent NETMN ETKMN PETMN	One End Threaded 1018 Carbon Steel or Equivalent NETN ETKN PETN	5	15.0–100.0	0–92.0	2.6	3						4	8
		6	15.0–300.0(290.0)	0–292.0(282.0)	3	4						5	
		8	20.0–400.0(390.0)	0–392.0(382.0)	3	4	5					7	
		10	20.0–600.0(590.0)	0–592.0(582.0)	3	4	5	6				8	10
		12	25.0–700.0(680.0)	0–690.0(670.0)	4	5	6	8				10	
		15	35.0–800.0(780.0)	0–790.0(770.0)	5	6	8	10				13	
20	40.0–800.0(780.0)	0–790.0(770.0)	5	6	8	10	12			17			
25	55.0–900.0(870.0)	0–890.0(860.0)	5	6	8	10	12	16		22			
304 Stainless Steel SETMN	304 Stainless Steel SETN	30	65.0–1000.0(970.0)	0–985.0(955.0)	5	6	8	10	12	16	20	27	15
		*35	80.0–900.0	0–885.0	6	8	10	12	16	20	30	15	
		*40	80.0–1000.0	0–980.0	8	10	12	16	20	24	36	20	
		*50	80.0–1000.0	0–980.0	10	12	16	20	24	41	20		

- When SC=Mx3 for One End Tapped Type, W=Mx2 is required. L( ) and SC( ) dimensions are applicable for One End Threaded types.
- \*D≥35 is applicable only to NETMN, ETKMN and PETMN.

Part Number Example

Part Number	L	SC	M
NETMN10	300	SC250	M5
SETN20	350	SC100	M10

Part Number Alterations

Part Number	L	F	G	(LKC / MLC)
NETN10	300	SC250	M5	MLC6

Alterations	Code	Spec.
Threaded Length 	MLC	Changes the Threaded length. Not applicable to D=5. MLC=0.1 mm Increment Mx1 ≤ MLC < Mx1.5 Ordering Code: MLC10 Applicable to One End Threaded only.

Alterations	Code	Spec.
Full Length (L Dimension) Precision 	LVC	When ordering multiple, each L dimension variation will be within ±0.02mm Ordering Code: LVC Applicable only for L≤200 and less than 20 orders for 1 itemized line.

For LKC, P.2219

# Resin Circular Posts

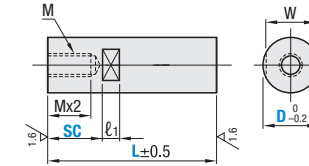
## One End Tapped / One End Threaded / One End Threaded Inserts / Both Ends Threaded Inserts

Thread inserts added to the body (resin) to strengthen the tapped holes.

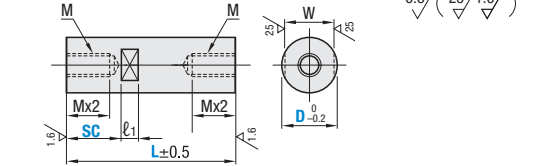
### Resin Circular Posts – One End Tapped / One End Threaded / One End Threaded Inserts / Both Ends Threaded Inserts

Type				Material	Color	Threaded Inserts Material
One End Tapped	Both Ends Tapped	One End Threaded Inserts	Both Ends Threaded Inserts			
PHRF	PLRF	PHNRF	PLNRF	Polyacetal	White	304 Stainless Steel

#### One End Tapped / One End Threaded Inserts



#### Both Ends Tapped / Both Ends Threaded Inserts



- SC=L-l<sub>1</sub>
- Characteristic Values P.3068

RoHS10

Part Number				L 1 mm Increment	SC 1 mm Increment	M (Coarse)	W	l <sub>1</sub>					
Type									D				
One End Tapped PHRF	Both Ends Tapped PLRF	One End Threaded Inserts PHNRF	Both Ends Threaded Inserts PLNRF	6	20–50	0–42	M3	5	8				
				8	25–150	0–142	M4	7					
				10	30–350	0–342	M5	8					
				PHRF	PLRF	PHNRF	PLNRF	12	40–400	0–390	M6	10	10
								15	50–500	0–490	M8	13	
								20	60–500	0–490	M10	17	
25	80–600	0–590	M12					22					
30	100–700	0–685	M16					27	15				

Part Number Example

Part Number	L	SC
PHRF10	300	SC200
PLNRF20	400	SC310