

Guides

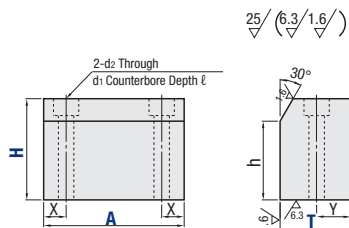
Straight / L-Shaped Type

Guides – Straight Type



RoHS 10

Part Number		Material	Hardness	Surface Treatment
Compact	Standard			
WGHBC	WGHM	1045 Carbon Steel or Equivalent	40 HRC~	Black Oxide
WGHMC	WGHM			Electroless Nickel Plating
—	WGHHB			Black Oxide
—	WGHHM			Electroless Nickel Plating
—	WGHA	2017 Aluminum Alloy	—	—
WGHSC	WGHJ	304 Stainless Steel		
WGHJC	WGHJ	Polyacetal		
WGHNC	WGHN	MC Nylon		
—	WGHNE	Conductive MC Nylon R2	—	—
—	WGHPT	PTFE		



Part Number	A	H 1 mm Increment	T	h	X	Y	d ₁	d ₂	ℓ	
Compact Type										
WGHBC	17	20	10	H-3	4.5	4.5	6.5	3.5	3.5	
WGHMC	20	30			6-10	4.5	4.5	6.5	3.5	3.5
WGHNC	20	30				12	5	5	6.5	3.5
Standard Type										
WGHB	20	30	40	50	H-5	5	5	6.5	3.5	
WGHM	20	30	40	50		5	6	8	4.5	4.5
WGHHB	30	40	50	60		7	9	9.5	5.5	5.5
WGHHM	30	40	50	60		8	11	11	6.5	6.5
WGHA	40	50	60	15-30	11	14	14	9	9	

T	Available Types													
	Compact					Standard								
	WGHBC	WGHMC	WGHSC	WGHJC	WGHNC	WGHB	WGHM	WGHHB	WGHHM	WGHA	WGHJ	WGHN	WGHNE	WGHPT
10	•	•	•	•	•	•	•	•	•	•	•	•	•	•
12	•	•	•	•	•	•	•	•	•	•	•	•	•	•
15	—	—	—	—	—	•	•	•	•	•	•	•	•	•
20	—	—	—	—	—	•	•	•	•	•	•	•	•	•
25	—	—	—	—	—	•	•	•	•	•	•	•	•	•
30	—	—	—	—	—	•	•	•	•	•	•	•	•	•

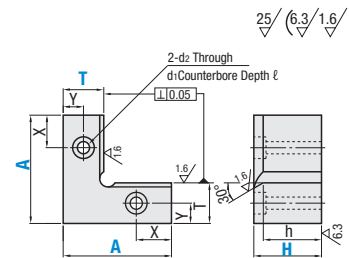
Part Number Example: WGHJ - 40 - 10 - 20

Guides – L-Shaped Type



RoHS 10

Part Number		Material	Hardness	Surface Treatment
Compact	Standard			
WGLBC	WGLM	1045 Carbon Steel or Equivalent	40 HRC~	Black Oxide
WGLMC	WGLM			Electroless Nickel Plating
—	WGLHB			Black Oxide
—	WGLHM			Electroless Nickel Plating
—	WGLA	2017 Aluminum Alloy	—	—
WGLSC	WGLS	304 Stainless Steel		
WGLJC	WGLJ	Polyacetal		
WGLNC	WGLN	MC Nylon		
—	WGLNE	Conductive MC Nylon R2	—	—
—	WGLPT	PTFE		



Part Number	A	H 1 mm Increment	T	h	X	Y	d ₁	d ₂	ℓ	
Compact Type										
WGLBC	17	20	10	H-3	4.5	4.5	6.5	3.5	3.5	
WGLMC	20	30			6-10	4.5	4.5	6.5	3.5	3.5
WGLNC	20	30				12	5	5	6.5	3.5
Standard Type										
WGLB	20	30	40	50	H-5	5	5	6.5	3.5	
WGLM	20	30	40	50		5	6	8	4.5	4.5
WGLHB	30	40	50	60		7	9	9.5	5.5	5.5
WGLHM	30	40	50	60		8	11	11	6.5	6.5
WGLA	40	50	60	15-30	11	14	14	9	9	

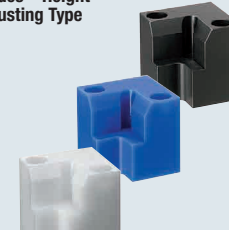
T	Available Types														
	Compact					Standard									
	WGLBC	WGLMC	WGLSC	WGLJC	WGLNC	WGLB	WGLM	WGLHB	WGLHM	WGLA	WGLS	WGLJ	WGLN	WGLNE	WGLPT
10	•	•	•	•	•	•	•	•	•	•	•	•	•	•	•
12	•	•	•	•	•	•	•	•	•	•	•	•	•	•	•
15	—	—	—	—	—	•	•	•	•	•	•	•	•	•	•
20	—	—	—	—	—	•	•	•	•	•	•	•	•	•	•
25	—	—	—	—	—	•	•	•	•	•	•	•	•	•	•
30	—	—	—	—	—	•	•	•	•	•	•	•	•	•	•

Part Number Example: WGLMC - 15 - 8 - 10

Guides

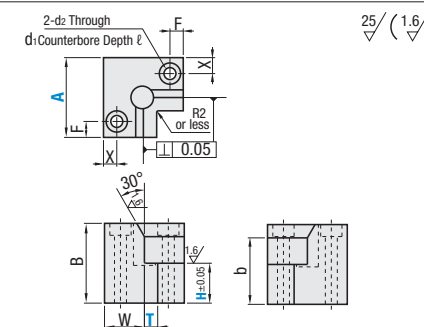
Height Adjusting / Pedestal / Angle Type

Guides – Height Adjusting Type



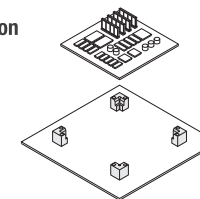
RoHS 10

Part Number	Material
WGDLJ	Polyacetal
WGDLN	MC Nylon
WGDLNE	Conductive MC Nylon R2



Part Number	A	H 1 mm Increment	T 1 mm Inc.	B	W	F	X	d ₁	d ₂	ℓ	b
WGDLJ	15	3-5	2-5	10	10	4	4	4.8	2.4	2.4	7
WGDLN	20	3-12	3-10	20	10	5	3.5	6.5	3.5	3.5	15
WGDLNE	30	3-22	3-15	30	15	5	6	8	4.5	4.5	25
—	40	3-32		40	20	7	9	9.5	5.5	5.5	35
—	50	3-42		50	20	7	9	9.5	5.5	5.5	45

Application Example



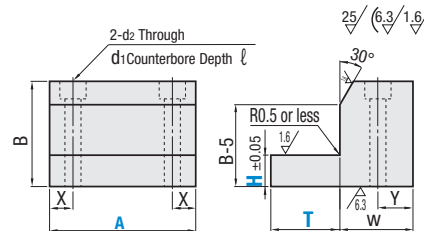
Part Number Example: WGDLJ - 20 - 10 - 3

Guides – Pedestal Type



RoHS 10

Part Number	Material	Hardness	Surface Treatment
WGDB	1045 Carbon Steel or Equivalent	40 HRC~	Black Oxide
WGDM			Electroless Nickel Plating
WGDHB			Black Oxide
WGDHM			Electroless Nickel Plating
WGDS	304 Stainless Steel	—	—
WGDJ	Polyacetal		
WGDN	MC Nylon		
WGDNE	Conductive MC Nylon R2		



Part Number	A	H 1 mm Increment	T 1 mm Increment	B	W	X	Y	d ₁	d ₂	ℓ
WGDB	20	3-12	2-15	20	15	5	6	8	4.5	4.5
WGDM	30									
WGDHB	40									
WGDHM	50									
WGDS	60	10-25	60	25	8	11	11	6.5	6.5	

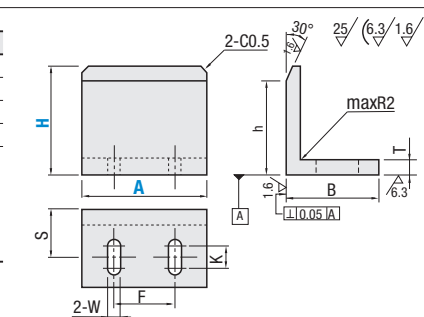
Part Number Example: WGDM - 30 - 10 - 10

Guides – Angle Type



RoHS 10

Part Number	Material	Hardness	Surface Treatment
WGNB	1045 Carbon Steel or Equivalent	40 HRC~	Black Oxide
WGNM			Electroless Nickel Plating
WGNHB			Black Oxide
WGNHM			Electroless Nickel Plating
WGNA	2017 Aluminum Alloy	—	—
WGNS	304 Stainless Steel		
WGNJ	Polyacetal		
WGNN	MC Nylon		
WGNNE	Conductive MC Nylon R2	—	—



Part Number	A	H 10 mm Increment	T	h	B	F	S	W	K
WGNB	20	20-60	8	H-5	30	11	19	3.5	8
WGNM	30		10		40	16	25	4.5	10
WGNHB	40		10		40	26	25	4.5	10
WGNHM	50		12		50	32	31	5.5	15
WGNA	60		12		50	42	31	5.5	15

Part Number Example: WGNJ - 20 - 40

Application Example

