

# Bushings for Locating Pins

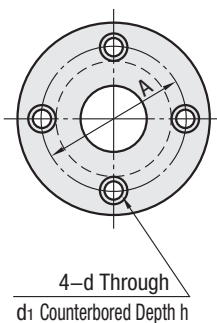
## Round Flanged



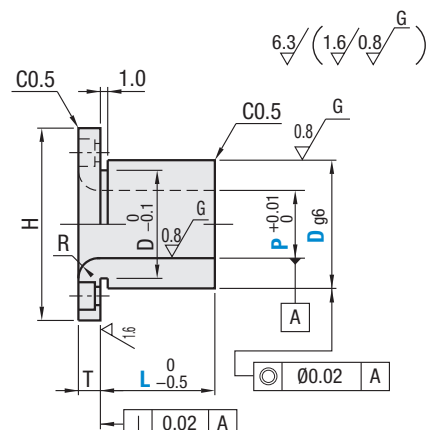
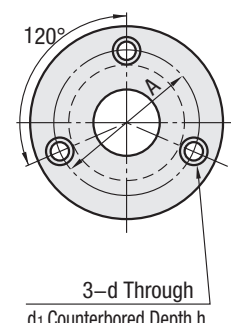
Type				Material		Surface Treatment	Hardness
P Fixed & L Selectable		P, L Configurable		P Configurable	P Standard		
4-Point Stopper	3-Point Stopper	4-Point Stopper	3-Point Stopper				
JBY	JBT	JBYF	JBTf	01 Tool Steel or Equivalent	01 Tool Steel or Equivalent	—	*Treated Hardness: 56-60 HRC min.
—	—	JBYFB	—	—	—	Black Oxide	
JBYM	—	JBYFM	JBTfM	01 Tool Steel	—	Electroless Nickel Plating	—
—	—	JBYFS	—	—	304 Stainless Steel	—	—
—	—	JBYFC	—	—	440C or 420 Stainless Steel	—	50-55 HRC min.

\* P Fixed Type is 60 to 63 HRC min.

4-Point Stopper



3-Point Stopper



### P Fixed & L Selectable

Part Number		L Selection						R	H	T	D <sub>96</sub>	d	d <sub>1</sub>	h	
Type	P	5	8	10	12	**16									
JBY JBYM JBT	5	8	10	12	**16		1	25	5	10	-0.005 -0.014	3.3	6.5	3.5	
	6	8	10	12	16		2	28	6	12	-0.006 -0.017	4.5	8	4.5	
	8	10	12	16	20					15					
	10	12	16	20	25	30				18					
	12	16	20	25	30					22					
	13	12	16	**20	25	**30		3	44	8	25	-0.007 -0.020	6.6	11	6.5
	15	12	16	20	25	30	26								
	16	16	20	25	30	35	30								
	20	20	25	30	**35	40	35				-0.009 -0.025				

⊖ L values 25, 30, 35, 40 not available for JBT25. ⊖ P values 5, 13, 16, 25 not available for JBT part type. ⊗ L dimensions marked with \*\* are not available for JBYM.

### P & L Configurable

Part Number		P		L		R	H	T	d	d <sub>1</sub>	h
Type	D <sub>96</sub>	0.01 mm Increment	0.1 mm Increment	0.01 mm Increment	0.1 mm Increment						
Round Flanges 4-Point Stopper JBYF JBYFB JBYFM JBYFS JBYFC	10	-0.005 -0.014	4.00-6.50	5.0-15.0		1	25	5	3.3	6.5	3.5
	12	-0.006 -0.017	6.00-8.50	10.0-35.0	2	28	36	6	4.5	8	4.5
	15	8.00-10.50									
	18	10.00-12.50									
	20	12.00-13.50									
	Round Flanges 3-Point Stopper JBTf JBTfM	22	-0.007 -0.020	12.00-13.50	12.0-50.0	3	44	56	8	6.6	11
25		13.00-15.50									
26		15.00-16.50									
30		16.00-20.50									
35		20.00-25.00									

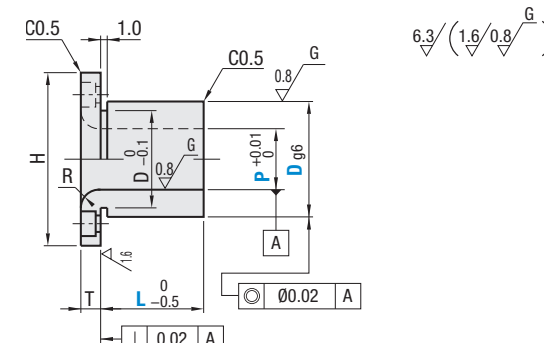
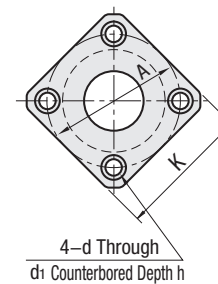
# Bushings for Locating Pins

## Square Flanged



Type		Material		Surface Treatment	Hardness
P Fixed & L Selectable	P, L Configurable	P Selectable	P Configurable		
JBS	JBSF	01 Tool Steel or Equivalent	01 Tool Steel or Equivalent	—	*Treated Hardness: 56-60 HRC min.
—	JBSFB	—	—	Black Oxide	
JBSM	JBSFM	01 Tool Steel or Equivalent	—	Electroless Nickel Plating	—
—	JBSFS	—	304 Stainless Steel	—	—
—	JBSFC	—	440C or 420 Stainless Steel	—	50-55 HRC min.

\* P Fixed Type is 60 to 63 HRC min.



### P Fixed & L Selectable

Part Number		L Selection					R	H	K	T	D <sub>96</sub>	d	d <sub>1</sub>	h	
Type	P	8	10	12	16	20									
JBS JBSM	8	10	*12	16	20		2	28	22	5	12	3.3	6.5	3.5	
	10	12	16	20	25	30					15				-0.006 -0.017
	12	16	20	25	30	*35					18				
	15	16	20	25	30	*35	40	3	44	34	6	25	4.5	8	4.5
	16	20	25	30	*35	40	26					-0.007 -0.020			
	20	25	30	*35	40		30								
	25	30	*35	40			35					-0.009 -0.025			

⊗ L dimensions marked with \* are not available for JBSM.

### P & L Configurable

Part Number		P		L		R	H	K	T	A	d	d <sub>1</sub>	h
Type	D <sub>96</sub>	0.01 mm Increment	0.1 mm Increment	0.01 mm Increment	0.1 mm Increment								
JBSF JBSFB JBSFM JBSFS JBSFC	10	-0.005 -0.014	4.00-6.50	5.0-15.0		1	25	20	5	17	3.3	6.5	3.5
	12	-0.006 -0.017	6.00-8.50	10.0-35.0	2	28	36	28	6	20			
	15	8.00-10.50											
	18	10.00-12.50											
	20	12.00-13.50											
	22	-0.007 -0.020	12.00-13.50	12.0-50.0	3	44	56	44	8	30	4.5	8	4.5
	25	13.00-15.50											
	26	15.00-16.50											
30	-0.009 -0.025	16.00-20.50			42	6.6	11	6.5					
35	20.00-25.00			46									

⊖ L+T≤Px3.0

