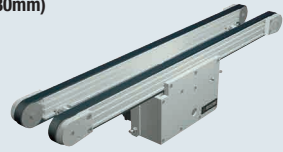


Timing Belt Conveyors

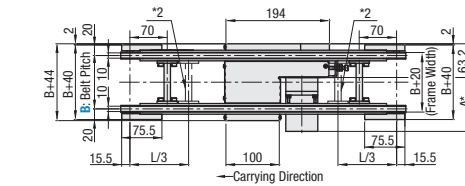
Dual Track, Center Drive, 2-Groove Frame (Pulley Dia. 30mm)

Features: Since there are two rows of conveyor surfaces, sensors and stoppers can be mounted between the belts. The Center Drive configuration allows drive section position adjustments. With the addition of tapped holes for pulley holders, mounting of optional parts becomes easier, compared to CVSTN.

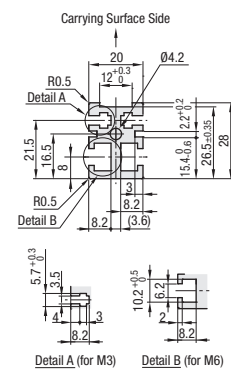
Timing Belt Conveyors – Dual Track, Center Drive, 2-Groove Frame (Pulley Dia. 30mm)



CVGTN 6W Motor Type



Frame Cross Section and Enlarged View (Symmetrical)



	Frame	Motor Cover (1)	Motor Cover (2)	Pulley Holder
Material	Aluminum	5052 Aluminum Alloy	5052 Aluminum Alloy	Aluminum
Surface Treatment	Clear Anodize	Clear Anodize	Clear Anodize	Paint

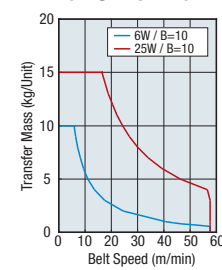
Gearhead Reduction Ratio

*May decrease depending on load condition.

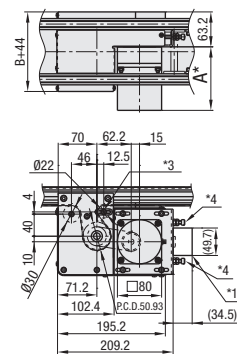
Gearhead Reduction Ratio	Belt Speed (m/min)	
	50Hz	60Hz
5	48.0	57.6
7.5	32.0	38.4
9	26.7	32.0
12.5	19.2	23.0
15	16.0	19.2
18	13.3	16.0
25	9.6	11.5
30	8.0	9.6
36	6.7	8.0
50	4.8	5.8
60	4.0	4.8
75	3.2	3.8
90	2.7	3.2
100	2.4	2.9
120	2.0	2.4
150	1.6	1.9
180	1.3	1.6

Conveying Capacity

* Reference Value



25W Motor Type



- Note
- *1 Capacitor: Installed on Single-Phase Constant Speed Motor Only
 - *2 When 2005 ≤ L ≤ 3000, Joints mounted at these locations (2 places)
 - *3 M5 Screw for Tension
 - *4 M6 Tensioning Screw
- * Timing Belts used are T5 Type

Ⓢ Compatible with JIS standard hex nuts.

* The drive section can be moved to a desired position within the aluminum extrusion slots.

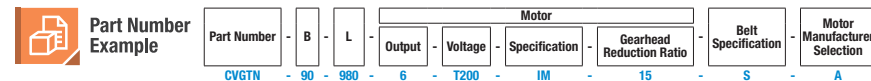
* When L ≤ 365, each slot has 4 pre-inserted nuts provided. When counterbores for inserting nuts are required, please specify in alterations.

Motor Specifications

Output (W)	Motor Specification	Manufacturer	Reduction Ratio	Motor Length (A)
6W	Constant Speed Motor	Panasonic	12.5-25	101.0
		Oriental	12.5-25	105.0
		Taiwanese	12.5-25	115.0
	Variable Speed Motor	Oriental	12.5-75	114.7
		Taiwanese	90-180	120.7
		Panasonic	12.5-25	115.0
25W	Constant Speed Motor	Oriental	12.5-75	126.9
		Taiwanese	90-180	132.9
		Panasonic	5-180	115.0
	Variable Speed Motor	Oriental	5-18	117.0
		Taiwanese	25-180	127.5
		Panasonic	5-75	129.0

Part Number	Width B 1mm Increment	Length L 5mm Increment	Motor				Belt Specification	Motor Manufacturer Selection Ⓢ The prices vary by manufacturer.
			Output (W)	Voltage (V)	Specification	Gearhead Reduction Ratio		
CVGTN	80-300	265-3000	6 25	(Single-Phase) TA100 TA110 TA115 TA200 TA220 TA230	IM (Constant Speed Motor) SCM *Oriental Motor only (Variable Speed Motor)	5 7.5 9 12.5 15 18 25 30 36 50 60 75 90 100 120 150 180	S (For Sliding, Green) J (No Belt)	A (Panasonic Motor) B (Oriental Motor) C (Taiwanese Motor)
			25	(Three-Phase) SA200 SA220 SA230	IM (Constant Speed Motor)	⊗ 5-9 not applicable for 6W Motor		
			6 25	NV (No Motor)	NM (No Motor)	NH (No Gearhead)		

- Ⓢ Connect the motor so that the belt rotates in the direction of conveyance.
- Ⓢ When "No motor, gearhead" is selected, the motor mounting hole pitch will vary depending on the motor's power rating. Please see Technical Information in our Conveyor Selection web site for the dimension details.
- Ⓢ When "No motor, gearhead" is selected, this unit will be delivered unassembled. The customer is to assemble the unit according to the included assembly instructions. See our Conveyor Selection site for assembly procedures and packaging details.



Specify Drive Section Position
Additional Counterbores
Brackets for Speed Controller Included
Post-Assembly Insertion Nuts Included
Motors with Electromagnetic Brake
Motor with Terminal Box
Stands (Legs)

For details of alterations, see P.1276.

Timing Belt Conveyors

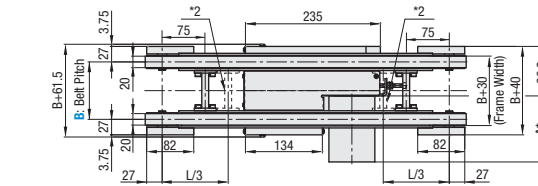
Dual Track, Center Drive, 3-Groove Frame (Pulley Dia. 50mm)

Features: Since there are two rows of conveyor surfaces, sensors and stoppers can be mounted between the belts. The Center Drive configuration allows drive section position adjustments. With the addition of tapped holes for pulley holders, mounting of optional parts becomes easier, compared to CVSTP.

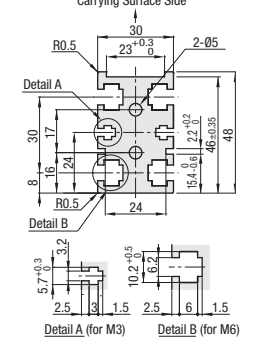
Timing Belt Conveyors – Dual Track, Center Drive, 3-Groove Frame (Pulley Dia. 50mm)



CVGTP 25W Motor Type



Frame Cross Section and Enlarged View (Symmetrical)



	Frame	Motor Cover (1)	Motor Cover (2)	Pulley Holder
Material	Aluminum	5052 Aluminum Alloy	5052 Aluminum Alloy	Aluminum
Surface Treatment	Clear Anodize	Clear Anodize	Clear Anodize	Paint

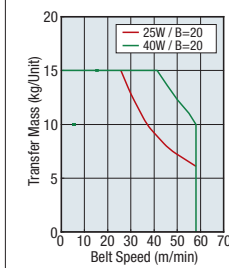
Gearhead Reduction Ratio

*May decrease depending on load condition.

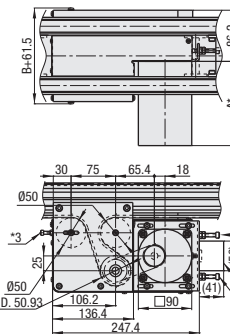
Gearhead Reduction Ratio	Belt Speed (m/min)	
	50Hz	60Hz
5	48.0	57.6
7.5	32.0	38.4
9	26.7	32.0
12.5	19.2	23.0
15	16.0	19.2
18	13.3	16.0
25	9.6	11.5
30	8.0	9.6
36	6.7	8.0
50	4.8	5.8
60	4.0	4.8
75	3.2	3.8
90	2.7	3.2
100	2.4	2.9
120	2.0	2.4
150	1.6	1.9
180	1.3	1.6

Conveying Capacity

* Reference Value



40W Motor Type



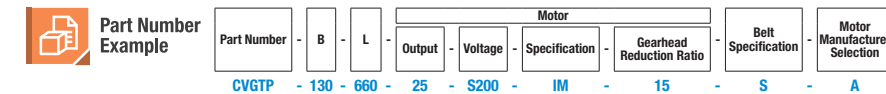
- Note
- *1 Capacitor: Installed on Single-Phase Constant Speed Motor Only
 - *2 When 2005 ≤ L ≤ 3000, Joints mounted at these locations (2 places)
 - *3 M5 Screw for Tension
 - *4 M6 Tensioning Screw
- * Timing belts used is T10 Type

Motor Specifications

Output (W)	Motor Specification	Manufacturer	Reduction Ratio	Motor Length (A)
25W	Constant Speed Motor	Panasonic	5-180	115.0
		Oriental	5-18	117.0
		Taiwanese	25-180	127.5
	Variable Speed Motor	Oriental	5-75	129.0
		Taiwanese	90-180	136.0
		Panasonic	5-18	127.0
40W	Constant Speed Motor	Oriental	25-180	137.5
		Taiwanese	5-75	139.5
		Panasonic	90-180	146.5
	Variable Speed Motor	Oriental	5-180	142.0
		Taiwanese	5-18	147.0
		Panasonic	25-180	165.0

Part Number	Width B 1mm Increment	Length L 5mm Increment	Motor				Belt Specification	Motor Manufacturer Selection Ⓢ The prices vary by manufacturer.
			Output (W)	Voltage (V)	Specification	Gearhead Reduction Ratio		
CVGTP	80-300	325-3000	25 40	(Single-Phase) TA100 TA110 TA115 TA200 TA220 TA230	IM (Constant Speed Motor) SCM *Oriental Motor only (Variable Speed Motor)	5 7.5 9 12.5 15 18 25 30 36 50 60 75 90 100 120 150 180	S (For Sliding, Green) J (No Belt)	A (Panasonic Motor) B (Oriental Motor) C (Taiwanese Motor)
			25 40	(Three-Phase) SA200 SA220 SA230	IM (Constant Speed Motor)			
			6 25	NV (No Motor)	NM (No Motor)	NH (No Gearhead)		

- Ⓢ Connect the motor so that the belt rotates in the direction of conveyance.
- Ⓢ When "No motor, gearhead" is selected, the motor mounting hole pitch will vary depending on the motor's power rating. Please see Technical Information in our Conveyor Selection web site for the dimension details.
- Ⓢ When "No motor, gearhead" is selected, this unit will be delivered unassembled. The customer is to assemble the unit according to the included assembly instructions. See our Conveyor Selection site for assembly procedures and packaging details.



Specify Drive Section Position
Additional Counterbores
Brackets for Speed Controller Included
Post-Assembly Insertion Nuts Included
Motors with Electromagnetic Brake
Motor with Terminal Box
Stands (Legs)

For details of alterations, see P.1276.