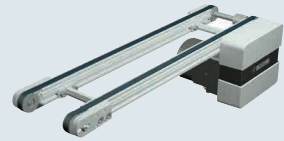


# Timing Belt Conveyors

## Dual Track, End Drive, 2-Groove Frame (Pulley Dia. 30mm)

**Features:** Since there are two rows of conveyor surfaces, sensors and stoppers can be mounted between the belts. Belt replacement can be done more easily compared to CVSTA.

### Timing Belt Conveyors – Dual Track, End Drive, 2-Groove Frame (Pulley Dia. 30mm)



	Frame	Motor Cover	Pulley Holder
Material	Aluminum	Aluminum	Aluminum
Surface Treatment	Clear Anodize	Paint	Paint

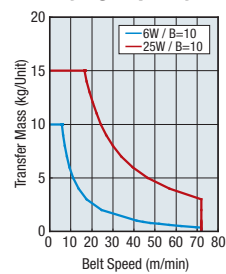
### Gearhead Reduction Ratio

\*May decrease depending on load condition.

Gearhead Reduction Ratio	Belt Speed (m/min)	
	50Hz	60Hz
5	60.0	72.0
7.5	40.0	48.0
9	33.3	40.0
12.5	24.0	28.8
15	20.0	24.0
18	16.7	20.0
25	12.0	14.4
30	10.0	12.0
36	8.3	10.0
50	6.0	7.2
60	5.0	6.0
75	4.0	4.8
90	3.3	4.0
100	3.0	3.6
120	2.5	3.0
150	2.0	2.4
180	1.7	2.0

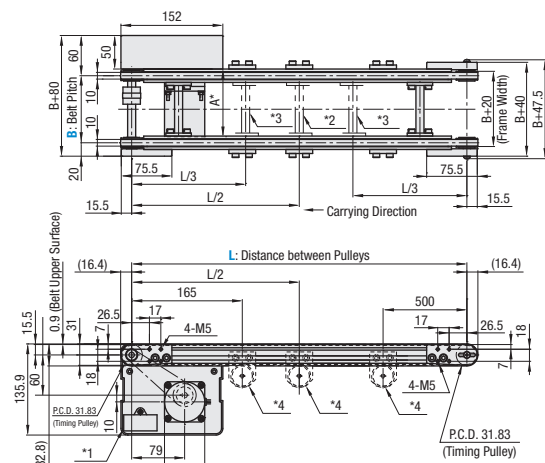
### Conveying Capacity

\*Reference Value



### CVGTA 6W Motor Type

Concerning the Rigid Couplings of B=101 or more ordered after April 1 2017, the set screw specifications will be changed, and the couplings will be fixed with adhesive.



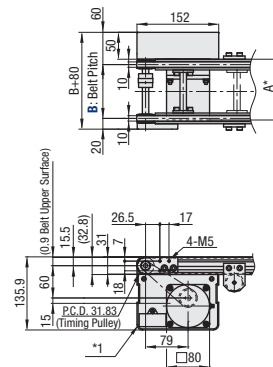
### Frame Cross Section and Enlarged View (Symmetrical)



Compatible with JIS standard hex nuts.

\* When  $L \leq 355$ , each slot has 4 pre-inserted nuts provided. When counterbores for inserting nuts are required, please specify in alterations.

### 25W Motor Type



Note

- \*1 Capacitor: Installed on Single-Phase Constant Speed Motor Only
- \*2 When  $1005 \leq L \leq 2000$ , Joints mounted at these locations (1 place)
- \*3 When  $2005 \leq L \leq 3000$ , Joints mounted at these locations (2 places)
- \*4 Belt Support Roller: When  $2005 \leq L$ , mounted at these locations (3 places) (3 places)

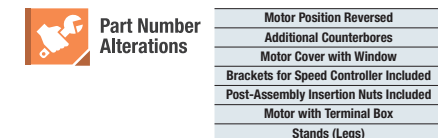
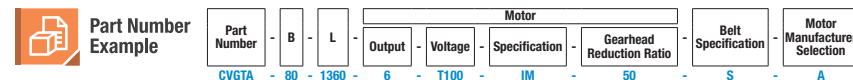
\* Timing belts used is T5 Type

### Motor Specifications

Output (W)	Motor		Reduction Ratio	Motor Length (A)
	Specification	Manufacturer		
25W	Constant Speed Motor	Panasonic	5-180	115.0
		Oriental	5-18	117.0
		Taiwanese	25-180	127.5
	Variable Speed Motor	Oriental	5-75	129.0
		Taiwanese	90-180	136.0
		Panasonic	5-180	142.0
40W	Constant Speed Motor	Oriental	5-18	147.0
		Taiwanese	25-180	165.0
		Taiwanese	5-75	161.6
	Variable Speed Motor	Oriental	90-180	170.6
		Taiwanese	5-18	157.0
		Taiwanese	25-180	175.0

Part Number	Width B 1mm Increment	Length L 5mm Increment	Motor				Belt Specification	Motor Manufacturer Selection
			Output (W)	Voltage (V)	Specification	Gearhead Reduction Ratio		
CVGTA	80-300	255-3000	6	(Single-Phase) TA100	IM (Constant Speed Motor)	5 7.5 9 12.5 15	S (For Sliding, Green) J (No Belt)	A (Panasonic Motor) B (Oriental Motor) C (Taiwanese Motor)
			25	TA110 TA115 TA200 TA220 TA230		18 25 30 36 50		
			25	(Three-Phase) SA200 SA220 SA230	60 75 90 100 120			
			6		NM (No Motor)	NH (No Gearhead)		R (No Motor, Gearhead)

- Connect the motor so that the belt rotates in the direction of conveyance.
- When "No motor, gearhead" is selected, the motor mounting hole pitch will vary depending on the motor's power rating. Please see Technical Information in our Conveyor Selection web site for the dimension details.
- When "No motor, gearhead" is selected, this unit will be delivered unassembled. The customer is to assemble the unit according to the included assembly instructions. See our Conveyor Selection site for assembly procedures and packaging details.



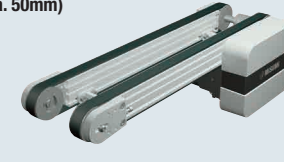
For details of alterations, see P.1276.

# Timing Belt Conveyors

## Dual Track, End Drive, 3-Groove Frame (Pulley Dia. 50mm)

**Features:** Since there are two rows of conveyor surfaces, sensors and stoppers can be mounted between the belts. Belt replacement can be done more easily compared to CVSTB.

### Timing Belt Conveyors – Dual Track, End Drive, 3-Groove Frame (Pulley Dia. 50mm)



	Frame	Motor Cover	Pulley Holder
Material	Aluminum	Aluminum	Aluminum
Surface Treatment	Clear Anodize	Paint	Paint

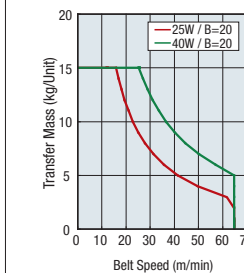
### Gearhead Reduction Ratio

\*May decrease depending on load condition.

Gearhead Reduction Ratio	Belt Speed (m/min)	
	50Hz	60Hz
5	54.0	64.8
7.5	36.0	43.2
9	30.0	36.0
12.5	21.6	25.9
15	18.0	21.6
18	15.0	18.0
25	10.8	13.0
30	9.0	10.8
36	7.5	9.0
50	5.4	6.5
60	4.5	5.4
75	3.6	4.3
90	3.0	3.6
100	2.7	3.2
120	2.3	2.7
150	1.8	2.2
180	1.5	1.8

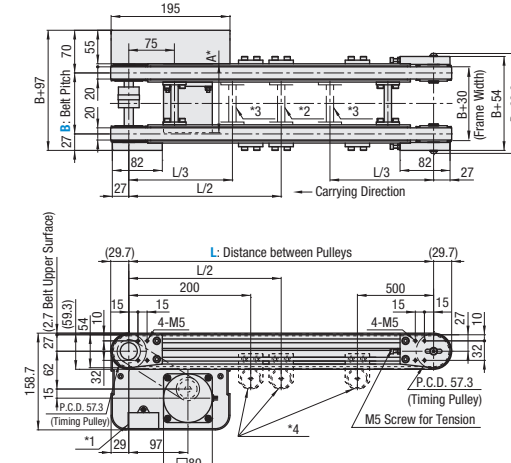
### Conveying Capacity

\*Reference Value

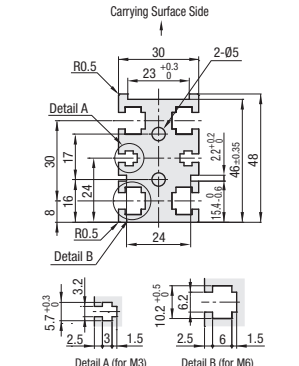


### CVGTB 25W Motor Type

Concerning the Rigid Couplings of B=101 or more ordered after April 1 2017, the set screw specifications will be changed, and the couplings will be fixed with adhesive.



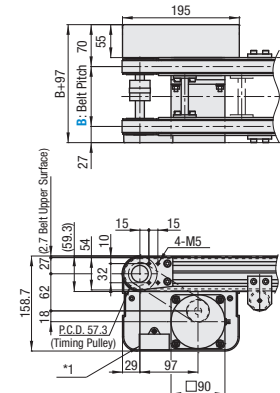
### Frame Cross Section and Enlarged View (Symmetrical)



Compatible with JIS standard hex nuts.

\* When  $L \leq 365$ , each slot has 4 pre-inserted nuts provided. When counterbores for inserting nuts are required, please specify in alterations.

### 40W Motor Type



Note

- \*1 Capacitor: Installed on Single-Phase Constant Speed Motor Only
- \*2 When  $1005 \leq L \leq 2000$ , Joints mounted at these locations (1 place)
- \*3 When  $2005 \leq L \leq 3000$ , Joints mounted at these locations (2 places)
- \*4 Belt Support Roller: When  $2005 \leq L$ , mounted at these locations (3 places) (3 places)

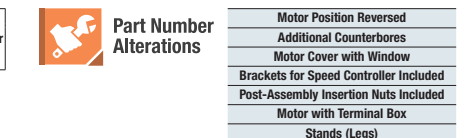
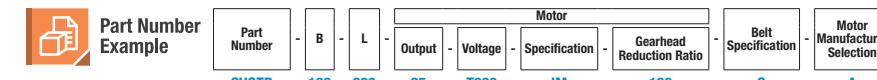
\* Timing belt used is T10 Type

### Motor Specifications

Output (W)	Motor		Reduction Ratio	Motor Length (A)
	Specification	Manufacturer		
6W	Constant Speed Motor	Panasonic	12.5-25	101.0
		Oriental	30-180	108.0
		Taiwanese	25-180	115.0
	Variable Speed Motor	Oriental	12.5-75	114.7
		Taiwanese	90-180	120.7
		Panasonic	12.5-18	115.0
25W	Constant Speed Motor	Oriental	25-180	125.0
		Taiwanese	12.5-75	126.9
		Taiwanese	90-180	132.9
	Variable Speed Motor	Oriental	5-18	115.0
		Taiwanese	25-180	127.5
		Taiwanese	5-75	129.0

Part Number	Width B 1mm Increment	Length L 5mm Increment	Motor				Belt Specification	Motor Manufacturer Selection
			Output (W)	Voltage (V)	Specification	Gearhead Reduction Ratio		
CVGTB	80-300	265-3000	25	(Single-Phase) TA100	IM (Constant Speed Motor)	5 7.5 9 12.5 15	S (For Sliding, Green) J (No Belt)	A (Panasonic Motor) B (Oriental Motor) C (Taiwanese Motor)
			40	TA110 TA115 TA200 TA220 TA230		18 25 30 36 50		
			40	(Three-Phase) SA200 SA220 SA230	60 75 90 100 120			
			6		NM (No Motor)	NH (No Gearhead)		R (No Motor, Gearhead)

- Connect the motor so that the belt rotates in the direction of conveyance.
- When "No motor, gearhead" is selected, the motor mounting hole pitch will vary depending on the motor's power rating. Please see Technical Information in our Conveyor Selection web site for the dimension details.
- When "No motor, gearhead" is selected, this unit will be delivered unassembled. The customer is to assemble the unit according to the included assembly instructions. See our Conveyor Selection site for assembly procedures and packaging details.



For details of alterations, see P.1276.