

Conveyor Rollers / Plastic Conveyor Rollers

Shaft / Roller Set Type

Features: Set of Conveyor Rollers and Economical Hollow Tube Rollers.

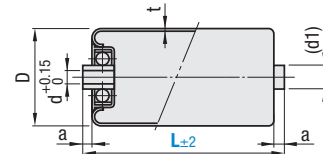
Conveyor Rollers – Shaft / Roller Set Type



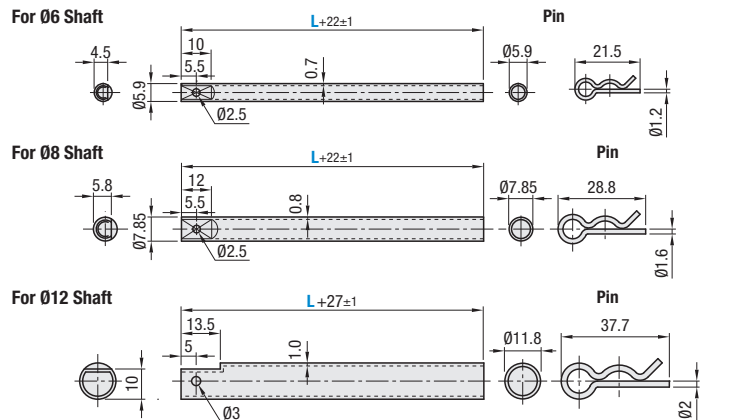
RoHS 10

Shafts and Pins are not shipped as included accessories not inserted into rollers.

Rollers



| Type | Material | | | | Surface Treatment | | Bearing |
|-------|----------|-------|-------|-------|-------------------|-----------------------------------|---------------------|
| | Core | Wheel | Shaft | Pin | Roller | Shaft, Pin | |
| HROJS | Steel | Steel | Steel | Steel | Hot Zinc Plating | Trivalent Bright Chromate Plating | Pressed-in Bearings |



| Part Number Type | No. | L Selection | D | a | d | (d ₁) | t | Set Shaft / Pin | Roller Strength (N) *Reference Values | | | | | | |
|------------------|-----|-------------|------|-----|------|-------------------|-----|-----------------|---------------------------------------|------|------|------|------|------|------|
| | | | | | | | | | L113 | L163 | L213 | L263 | L313 | L413 | L513 |
| HROJS | 19 | 113 | 19.1 | 5 | 6.2 | (9) | 1.2 | For 06 | 431 | 318 | 205 | 171 | 137 | 98 | 78 |
| | 22 | 163 | 22.2 | 3.5 | 6.2 | (9) | 1.2 | | 431 | — | 205 | — | 137 | 98 | 78 |
| | 28 | 213 | 28.6 | 3.5 | 8.2 | (12) | 1.2 | For 08 | 490 | 490 | 490 | 450 | 411 | 303 | 245 |
| | 38 | 263 | 38.1 | 5.5 | 12.2 | (16) | 1.2 | | 1411 | 1411 | 1411 | 1166 | 922 | 785 | 588 |
| | 42 | 313 | 42.7 | 5 | 12.2 | (16) | 1.4 | For 012 | 1667 | 1628 | 1589 | 1310 | 1030 | 883 | 745 |
| | 50 | 413 | 50.8 | 6.5 | 12.2 | (18) | 1.6 | | 1715 | 1680 | 1646 | 1543 | 1440 | 1068 | 852 |
| | 57 | 513 | 57.2 | 6.5 | 12.2 | (18) | 1.4 | | 1715 | 1680 | 1646 | 1543 | 1440 | 1068 | 852 |

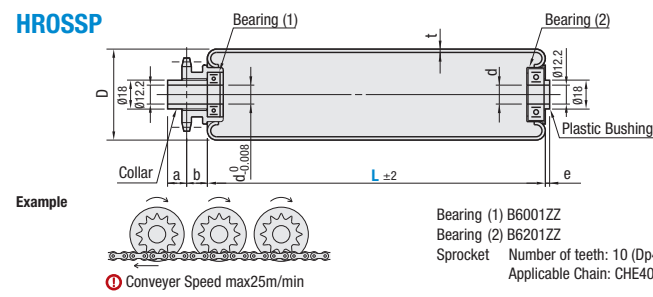
Part Number Example: HROJS38 - L 263

Feature: Rollers with integrated sprockets for synchronizing.

Roller with Sprocket



HROSSP



Example

Bearing (1) B6001ZZ
Bearing (2) B6201ZZ
Sprocket Number of teeth: 10 (Dp41.1, Do46)
Applicable Chain: CHE40 (P.1514)
Conveyor Speed max25m/min

Material: Pipe: Steel (Hot Zinc Plating)
Sprocket: 1045 Carbon Steel or Equivalent
Resin Bushing: 6 Nylon (Blk.)
Accessories: Collar

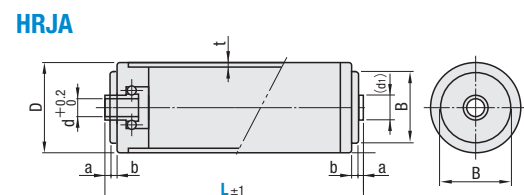
| Part Number Type | No. | L | D | d | a | b | e | t | Roller Strength (N) | | | | |
|------------------|-----|-----|------|----|----|----|---|-----|---------------------|------|------|------|------|
| | | | | | | | | | L100 | L200 | L300 | L400 | L500 |
| HROSSP | 38 | 100 | 38.1 | 12 | 12 | 14 | 3 | 2.4 | 883 | 809 | 588 | 490 | 417 |
| | 57 | 300 | 57.2 | 12 | 12 | 13 | 3 | 2.1 | 883 | 834 | 735 | 539 | 441 |

Part Number Example: HROSSP38 - L 100

Plastic Conveyor Rollers



HRJA



Plastic wheel and roller are glued.
Use in combination with Roller Shafts, see P.1185.
Do not let the shaft hubs on the rollers to support the cantilevered loads as this will apply offset loads on the bearings.

| Material | Rollers | Wheel |
|----------|----------------------|--|
| | ABS Resin Plastic | Outer Wheel / Inner Wheel: Polyacetal Retainer: 66 Nylon Cover: ABS Plastic Ball: 304 Stainless Steel |

| Part Number Type | No. | L 1 mm Increment | D | a | b | B | d | (d ₁) | t | Roller Strength (N) *Reference Values | | | | |
|------------------|-----|------------------|----------|------|----------|-----------|-----|-------------------|-----------|---------------------------------------|------|------|------|------|
| | | | | | | | | | | L113 | L213 | L313 | L413 | L513 |
| HRJA | 20 | 50-513 | 20.4±0.5 | (2) | (1) | (14.9) | 6.1 | 9.5(±0.2) | 1.5(±0.5) | 113 | 105 | 98 | 90 | 83 |
| | 30 | 30.6±0.5 | (24.9) | 8.2 | 14(±0.2) | 1.8(±0.5) | 162 | 154 | 147 | 139 | 132 | | | |
| | 50 | 50.3±0.5 | (39.9) | 12.2 | 17(±0.2) | 2.8(±0.5) | 314 | 304 | 294 | 289 | 279 | | | |

Part Number Example: HRJA20 - L 213

Conveyor Roller Shafts / Mini-Rollers for Conveyors

Conveyor Roller Shafts



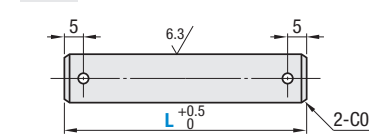
RoHS 10

| Type | Material | Surface Treatment |
|------|---------------------------------|----------------------------|
| HRD | 1045 Carbon Steel or Equivalent | — |
| HRDB | | Black Oxide |
| HRDM | | Electroless Nickel Plating |
| HRDS | 304 Stainless Steel | — |

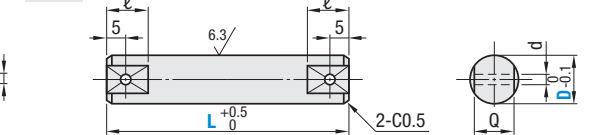
Applicable to Conveyor Rollers and Mini-Rollers on P.1183, P.1185.
Hairpin cotter pins are not included.

25/(6.3/)

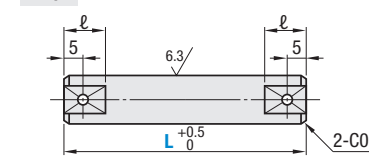
Shape A



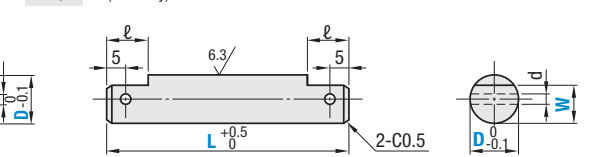
Shape G



Shape D



Shape E (D12 Only)



| Part Number Type | Shape | D | L= 1 mm Increment | W | | Q | d | ℓ |
|-----------------------------|------------------|---|-------------------|-----|-----|---|-----|----|
| | | | | 4 | 4.5 | | | |
| HRD HRDB HRDM HRDS | A D G E | 6 | 60-550 | 4 | 4.5 | 4 | 2.5 | 11 |
| | | | | 5.8 | 6 | 6 | 2.5 | 12 |
| | | | | 10 | 8 | 3 | 13 | |

Part Number Example: HRD D 6 - L 135 - W 4.5

| Part Number Type | D | Available Types | | | Available Options | | | |
|------------------|----|-----------------|---------|---------|-------------------|---|---|---|
| | | 60-200 | 201-400 | 401-550 | A | D | E | G |
| HRD | 6 | • | • | • | • | • | • | • |
| | 8 | • | • | • | • | • | • | • |
| | 12 | • | • | • | • | • | • | • |
| HRDB | 6 | • | • | • | • | • | • | • |
| | 8 | • | • | • | • | • | • | • |
| | 12 | • | • | • | • | • | • | • |
| HRDM | 6 | • | • | • | • | • | • | • |
| | 8 | • | • | • | • | • | • | • |
| | 12 | • | • | • | • | • | • | • |
| HRDS | 6 | • | • | • | • | • | • | • |
| | 8 | • | • | • | • | • | • | • |
| | 12 | • | • | • | • | • | • | • |

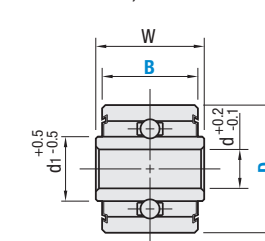
Mini-Rollers for Conveyors



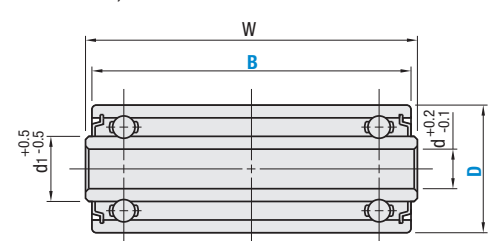
RoHS 10

| Type | Material | Surface Treatment | Bearing |
|-------|-----------------|----------------------------|------------------|
| CNMR | Steel | Trivalent Chromate Plating | Machined Bearing |
| CNMRC | | Hard Chrome Plating | |
| CNMRS | Stainless Steel | — | |

B=15, 2



B=50, 100



| Part Number Type | D | B | d | d ₁ | W | Allowable Load (N) | Available Types | | |
|------------------------|----|-----|-----|----------------|-----|--------------------|-----------------|-------|-------|
| | | | | | | | CNMR | CNMRC | CNMRS |
| CNMR CNMRC CNMRS | 20 | 15 | 6.1 | 10 | 17 | 294 | • | • | • |
| | | 25 | 6.1 | | 27 | 392 | • | • | • |
| | | 50 | 6.2 | | 52 | 490 | • | — | — |
| | | 100 | 6.2 | | 102 | 490 | • | — | — |

Use in combination with Conveyor Roller Shafts.

Part Number Example: CNMRC20 - B 50