

Silicon Rubber / Urethane Mold Bearings

Threaded Flat Type

Silicon Rubber / Urethane Mold Bearings – Threaded Flat Type

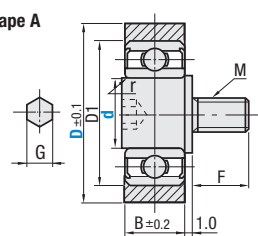


Urethane (white) may turn yellow with age.

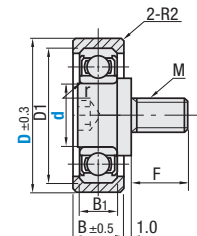
RoHS 10

Type		Material	Hardness	Color	Bearing	Shaft	
Standard Threaded	Long Threaded					Material	Surface Treatment
UMBKH	UMBKT	Urethane	Shore A95	Black	52100 Bearing Steel	SUM	Electroless Nickel Plating
UMSBKH	UMSBKT			440C Stainless Steel	303 Stainless Steel	—	
UMBKWH	UMBKWT			52100 Bearing Steel	SUM	Trivalent Chromate	
UMSBKWH	UMSBKWT			440C Stainless Steel	303 Stainless Steel	—	
UMBH	UMBT		Shore A90	Black	52100 Bearing Steel	SUM	Electroless Nickel Plating
UMSBH	UMSBT			440C Stainless Steel	303 Stainless Steel	—	
UMBWH	UMBWT			52100 Bearing Steel	SUM	Trivalent Chromate	
UMSBWH	UMSBWT			440C Stainless Steel	303 Stainless Steel	—	
UMBGH	—	Shore A70	Black	52100 Bearing Steel	SUM	Electroless Nickel Plating	
UMBLH	—		White	52100 Bearing Steel	SUM	Electroless Nickel Plating	
UMBLWH	UMBLWT	Shore A50	Black	52100 Bearing Steel	SUM	Electroless Nickel Plating	
SUMBH	SUMBT		White	52100 Bearing Steel	SUM	Electroless Nickel Plating	
SUMSBH	SUMSBT	Silicon Rubber	Shore A70	Light Gray	52100 Bearing Steel	SUM	Electroless Nickel Plating
UMBH	UMBT			440C Stainless Steel	303 Stainless Steel	—	
UMBDH	UMBDT	Antistatic Urethane	Shore A90	Gray	52100 Bearing Steel	SUM	Electroless Nickel Plating

Shape A



Shape B



Bearing Accuracy JISB1514 Class 0
For detailed bearing dimensions, please see P.1018–1019, 1028–1029.

Shape A

Part Number	Type	d	D	M (Coarse)	F		Allowable Load N (kgf)					B	D ₁	r (min.)	G	Bearing Used
					Standard	Long	Urethane				Silicon					
							Shore A95	Shore A90	Shore A70	Shore A50						
Standard Threaded UMBKH UMSBKH UMBKWH UMSBKWH UMBH UMSBH UMBWH UMSBWH UMBGH UMBLH UMBLWH SUMBH SUMSBH UMBH	Long Threaded UMBKT UMSBKT UMBKWT UMSBKWT UMBT UMSBT UMBWT UMSBWT UMSWT UMBLWT SUMBT SUMSBT UMBDT	3	10	M3	4	6	38(3.8)	28(2.8)	9(0.9)	4(0.4)	7(0.7)	3	7	0.1	1.5	W683ZZA
		3	12				53(5.4)	34(3.5)	10(1)	6(0.6)	9.8(1)					
		*4	13	M4	5	8	66(6.7)	44(4.5)	13(1.3)	7(0.7)	13(1.3)	4	9	0.15	2.5	W684AX50ZZ
							16	79(8.1)	59(6)	16(1.6)	6(0.6)					
		*5	16	M4	5	8	79(8.1)	59(6)	16(1.6)	6(0.6)	18(1.8)	5	13	0.2	2.5	WBC5-13ZZ
							20	102(10.4)	78(8)	20(2)	9(0.9)					
		*6	20	M6	8	12	114(11.7)	78(8)	23(2.3)	15(1.5)	24(2.4)	6	16	0.3	4	625ZZ
							28	218(22.2)	157(16)	44(4.5)	39(4)					
		*8	28	M6	8	12	208(21.2)	157(16)	42(4.3)	35(3.6)	47(4.8)	7	22	0.3	4	608ZZ
							30A	-	176(18)	81(8.3)	65(6.7)					
		10	30A	M6	8	12	94(9.6)	176(18)	94(9.6)	51(5.2)	53(5.4)	8	26	0.6	5	600ZZ
							40A	-	274(28)	136(13.9)	93(9.5)					
15	40A	M10	12	20	122(12.4)	274(28)	122(12.4)	96(9.9)	82(8.4)	9	32	0.3	5	600ZZ		
					45A	-	343(35)	109(11.1)	102(10.5)						103(10.5)	
20	45A	M10	12	20	130(13.3)	343(35)	130(13.3)	98(10.1)	103(10.5)	9	37	0.3	8	620ZZ		
					55A	-	490(50)	225(22.9)	176(18.1)						147(15)	
25	65A	M10	12	20	750(70)	490(50)	333(34)	250(25.8)	226(23)	15	52	1	10	6205ZZ		

Only d4–8 are available for * marked types. Allowable load is for reference.

Shape B

Part Number	Type	d	D	M (Coarse)	F		Allowable Load N(kgf)					B	D ₁	B ₁	r (min.)	G	Bearing
					Standard	Long	Urethane				Silicon						
							Shore A95	Shore A90	Shore A70	Shore A50							
Standard Threaded UMBKH UMSBKH UMBKWH UMSBKWH UMBH UMSBH UMBWH UMSBWH UMBGH UMBLH UMBLWH SUMBH SUMSBH UMBH	Long Threaded UMBKT UMSBKT UMBKWT UMSBKWT UMBT UMSBT UMBWT UMSBWT UMSWT UMBLWT SUMBT SUMSBT UMBDT	8	30	M6	8	12	248 (25.3)	176 (18)	81 (8.3)	65 (6.7)	53 (5.4)	11	22	7	0.3	4	608ZZ
		10	30				201 (20.5)	176 (18)	94 (9.6)	51 (5.2)	53 (5.4)						
		10	40	M6	8	12	412 (42)	274 (28)	136 (13.9)	93 (9.5)	82 (8.4)	12	30	9	0.6	5	6200ZZ
							15	40	369 (37.6)	274 (28)	122 (12.4)						
		15	45	M10	12	20	534 (54.5)	343 (35)	109 (11.1)	102 (10.5)	103 (10.5)	15	35	11	0.6	8	6202ZZ
							20	45	391 (39.9)	343 (35)	130 (13.3)						
		20	55	M10	12	20	674 (68.7)	490 (50)	225 (22.9)	176 (18.1)	147 (15)	18	47	14	1	8	6204ZZ
							25	65	999 (101.9)	750 (70)	333 (34)						

Allowable load is for reference.

Silicon Rubber / Urethane Mold Bearings

Threaded Flat Type, continued

Part Number Example: UMBH10 - 30A

Part Number Alterations: UMBH6 - 20 - DC18

Alteration	Code	Spec.
	DC	O.D. Dimension Changes the D dimension in 1 mm increment. D ₁ +2≤DC≤D-1 Ordering Code: DC18

Properties of Antistatic Urethane

Item	Increment	UMBDH, UMBDT
Specific Volume Resistivity	Ωcm	2.1 x 10 ⁸
Surface Resistivity	Ω	4.0 x 10 ⁹

Test Conditions (Temperature 30°C / Humidity 60%)
Listed values are not guaranteed values but an example of measured values.

d	D	Available Types										
		Urethane (Shore A95)		Urethane (Shore A90)				Urethane (Shore A70)	Urethane (Shore A50)	Silicon Rubber (Shore A70)		Antistatic Urethane (Shore A70)
		Steel Bearing	Stainless Steel Bearing	Steel Bearing	Stainless Steel Bearing		Steel Bearing	Steel Bearing	Stainless Steel Bearing	Stainless Steel Bearing		
3	10	•	—	•	—	—	—	•	•	•	•	•
	12	•	—	•	•	•	•	•	•	•	•	•
4	13	•	—	•	•	•	•	•	•	•	•	•
	16	•	—	•	•	•	•	•	•	•	•	•
5	16	•	—	•	•	•	•	•	•	•	•	•
	20	•	—	•	•	•	•	•	•	•	•	•
6	20	•	—	•	•	•	•	•	•	•	•	•
	28	•	—	•	•	•	•	•	•	•	•	•
8	28	•	—	•	•	•	•	•	•	•	•	•
	30	•	—	•	•	•	•	•	•	•	•	•
10	30A	—	—	•	•	•	•	•	•	•	•	•
	40	•	—	•	•	•	•	•	•	•	•	•
15	40	•	—	•	•	•	•	•	•	•	•	•
	45	•	—	•	•	•	•	•	•	•	•	•
20	45A	—	—	•	•	•	•	•	•	•	•	•
	55	•	—	•	•	•	•	•	•	•	•	•
25	55A	—	—	•	•	•	•	•	•	•	•	•
	65	•	—	•	•	•	•	•	•	•	•	•