

# Rollers

## Urethane Thickness Selectable Type

### Rollers - Urethane Thickness Selectable Type



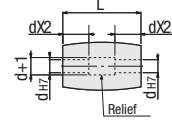
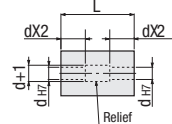
RoHS 10

Type			mMaterial		hHardness	Bearing
No Bearing	With Bearings		Core	Lining		
ROEUHS	ROERUHS	—	304 Stainless Steel	Urethane (Natural Color)	Shore A95	Steel
ROEUHA	ROERUHA	—	Aluminum Alloy			
ROEUS	ROERUS	ROECRUS	304 Stainless Steel			
ROEJA	ROERJA	ROECRJA	Aluminum Alloy		Shore A90	
ROEGS	ROERGS	—	304 Stainless Steel			
ROEGA	ROERGA	ROECRGA	Aluminum Alloy		Shore A70	
—	ROERHS	—	304 Stainless Steel			
—	ROERHA	ROECRHA	Aluminum Alloy		Shore A50	

Urethane is baked on the outer circumference of the core material.

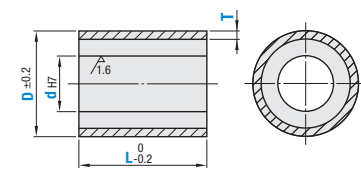
When L ≤ dx3, hole d is machined from the same direction.

When L > dx3, hole d is machined from both ends as shown below. There may be no relief in some cases.

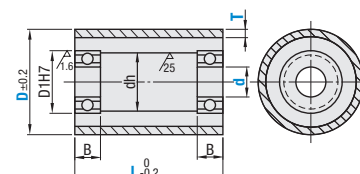


6.3 / (25 / 1.6)

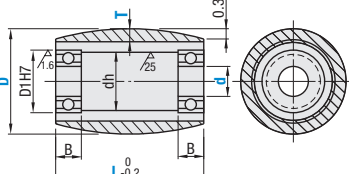
### No Bearing Straight Type



### With Bearing Straight Type



### Crowned Type



### No Bearing Type

Part Number Type	D	d <sub>HT</sub>	L 10mm Increment	T
Straight ROEUHS ROEUHA ROEUS ROEJA ROEGS ROEGA	20	8	20-100	5
	25	8 10 12		
	30	8 10 12 15		
	35	8 10 12 15		
	40	8 10 12 15		
	50	10 12 15 20	30-100	5 10
	60	12 15 20 25		
	80	15 20 25 30		
	100	20 25 30 40		

### With Bearings

Part Number Type	D	d	L 10mm Increment	T	D <sub>1</sub>	dh	B	Bearing Used
Straight ROERUHS ROERUHA ROERUS ROERJA ROERGA ROERHS ROERHA	40	8	20-100	5	19	15	6	698ZZx2
		10			22	18	6	6900ZZx2
	12	22			18	6	6900ZZx2	
	15	28			24	8	6001ZZx2	
	20	32			28	9	6002ZZx2	
	25	28			24	8	6001ZZx2	
	30	32			28	9	6002ZZx2	
	35	42			36	12	6004ZZx2	
	40	32			28	9	6002ZZx2	
	45	42			36	12	6004ZZx2	
	50	47	41	12	6005ZZx2			
	55	42	36	12	6004ZZx2			
	60	47	41	12	6005ZZx2			
	65	47	41	12	6005ZZx2			
	70	55	48	13	6006ZZx2			

For bearing detailed dimensions, see P.1018-1019, 1028-1029.

Part Number Example: ROEUS60 - 20 - 50 - T5

Part Number Alterations: ROEUS60 - 12 - 50 - T5 - MC

Alteration Code	Tapping MC								
Spec.	<p>Adds 2 tapped holes at 90°.</p> <table border="1"> <tr> <th>D</th> <th>M</th> </tr> <tr> <td>35, 40</td> <td>4</td> </tr> <tr> <td>50, 60, 80</td> <td>5</td> </tr> <tr> <td>100</td> <td>6</td> </tr> </table> <p>Ordering Code: MC</p> <p>Applicable to No Bearing Type only.</p>	D	M	35, 40	4	50, 60, 80	5	100	6
D	M								
35, 40	4								
50, 60, 80	5								
100	6								

# Groove Rollers

### Groove Rollers

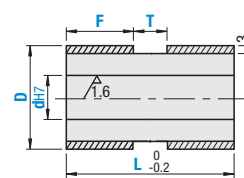


RoHS 10

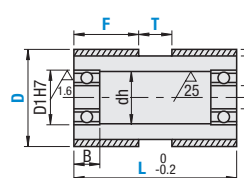
Type		Material			Hardness
No Bearing	With Bearing	Core	Lining	Bearing	
ROUAM	RORUAM	Aluminum Alloy	Urethane (Natural Color)	Steel	Shore A90
ROUSM	—	304 Stainless Steel			

Urethane is baked on the outer circumference of the core material.

### No Bearing



### With Bearing

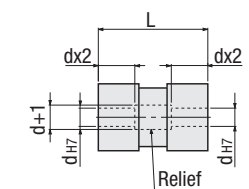


6.3 / (25 / 1.6)

### No Bearing

Part Number Type	D	d <sub>HT</sub>	L 1mm Increment	F	T
ROUAM ROUSM	25	8 10 12	15-50	0-46 F+T ≤ L-2	
	30	8 10 12 15			
	35	10 12 15 20			
	40	10 12 15 20			
	50	12 15 20 25	25-100		
	60	12 15 20 25 30			
	80	15 20 25 30	30-100		

When L ≤ dx3, hole d is machined from the same direction. When L > dx3, hole d is machined from both ends as shown below. There is no relief in some cases.



### With Bearings

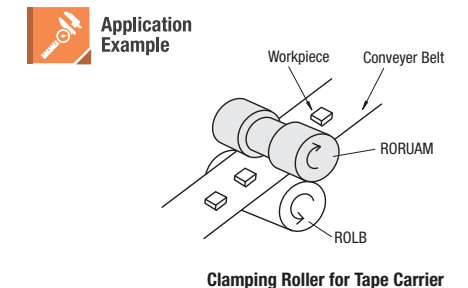
Part Number Type	D	L	F	T	d	D <sub>1HT</sub>	dh	B	Bearing	
RORUAM	25	20-50	0-46 F+T ≤ L-2		6	15	10	5	696ZZ x 2	
	30				8	19	15	6	698ZZ x 2	
	35	10			22	18	6	6900ZZ x 2		
	40	12			28	24	8	6001ZZ x 2		
	50	25-100			2-96 F+T ≤ L-2	15	32	28	9	6002ZZ x 2

Urethane may discolor over time, but there is no effect on physical properties.

Part Number Example: ROUSM30 - 8 - L30 - F10 - T5

Part Number Alterations: ROUSM30 - 8 - L30 - F10 - T5 - MC

Alterations Code	Tapping MC	Groove Depth DC	Bearing Material SB								
Spec.	<p>Tapped holes located at 90° are added at two locations.</p> <table border="1"> <tr> <th>D</th> <th>M</th> </tr> <tr> <td>25, 30</td> <td>3</td> </tr> <tr> <td>35, 40</td> <td>4</td> </tr> <tr> <td>50, 60, 80</td> <td>5</td> </tr> </table> <p>Ordering Code: MC</p> <p>Available for No Bearing Type only.</p>	D	M	25, 30	3	35, 40	4	50, 60, 80	5	<p>No Bearing: D-2xDC ≥ d+6 With Bearing: D-2xDC ≥ dh+6 T ≥ 4 DC ≤ 15 Changes groove depth in 1mm increment. Ordering Code: DC5</p>	Changes the material of bearings to stainless steel. Ordering Code: SB
D	M										
25, 30	3										
35, 40	4										
50, 60, 80	5										



Clamping Roller for Tape Carrier