

Rollers (Tapped)

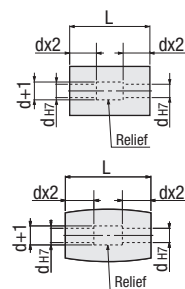
Straight Type / Crowned Type (L=15-100), *continued*

Rollers (Tapped) – Straight Type / Crowned Type (L=15-100)



RoHS 10

- When L ≤ dx3, hole d is machined from the same direction.
- When L > dx3, hole d is machined from both ends as shown below. There is no relief in some cases.

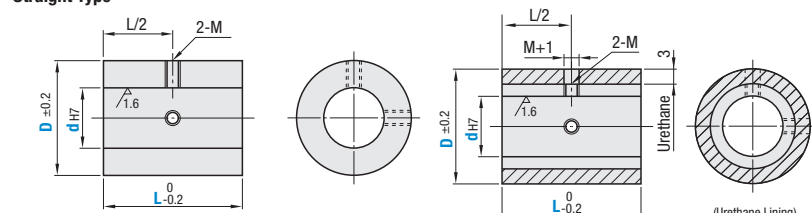


Type	Material	Surface Treatment (Lining)	Hardness
Straight	Crowned	Core	
ROLSN	ROCSN	304 Stainless Steel	—
ROLAN	ROCAN	Aluminum Alloy	—
ROUSN	ROCUSN	304 Stainless Steel	Shore A90
ROUAN	ROCUAN	Aluminum Alloy	
ROGSN	—	304 Stainless Steel	Shore A70
ROGAN	—	Aluminum Alloy	
ROHSN	—	304 Stainless Steel	Shore A50
ROHAN	—	Aluminum Alloy	

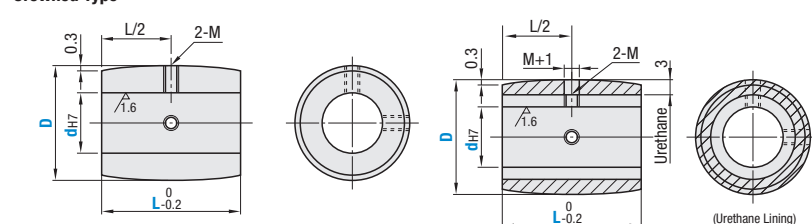
Urethane is baked on the outer circumference of the core material.

6.3 / (1.6 /)

Straight Type



Crowned Type



Part Number	Type	D	d _{HT}	L	M
Straight Core Only ROLSN ROLAN	Urethane ROUSN ROUAN ROGSN ROHSN ROHAN	20	8	15 20 25 30 40 50	M3
		25	8 10 12	15 20 25 30 40 50	
		30	8 10 12 15	15 20 25 30 40 50	
		35	10 12 15 20	20 25 30 40 50	
		40	10 12 15 20	20 25 30 40 50	
		50	12 15 20 25	25 30 40 50 100	
Crowned Core Only ROCSN ROCAN	Urethane ROCUSN ROCUAN	60	12 15 20 25 30	30 40 50 100	M5
		80	15 20 25 30	40 50 100	

Urethane may discolor over time, but there is no effect on physical properties.

Part Number Example: ROLAN30 - 8 - 30

Part Number Alterations: ROUSN50 - 12 - 50 - UDC

Alteration	Code	Spec.
Change to Antistatic Urethane (Urethane Color: Gray)	UDC	Urethane Shore A90 (ROUSN, ROSUSN, ROUAN and ROCUAN is changed to Antistatic Urethane). Ordering Code: UDC Specific Volume Resistivity 2.1x10 ⁸ Ω·cm Surface Resistivity 4.0x10 ⁹ Ω (Temperature 30°C / Humidity 60%)

Vertical Guide Rollers

Features: Preassembled rollers contribute to labor savings.

Vertical Guide Rollers



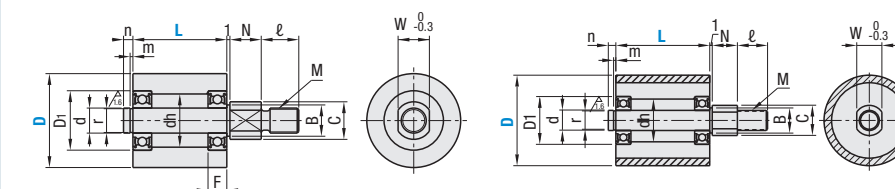
RoHS 10

Type	Material				Surface Treatment		
	Roller	Shaft	Retaining Ring	Bearing	Roller	Shaft	Retaining Ring
TGRB	1045 Carbon Steel or Equivalent	1045 Carbon Steel or Equivalent	Spring Steel	Steel	Electroless Nickel Plating	Electroless Nickel Plating	—
TGRS	304 Stainless Steel	304 Stainless Steel	304 Stainless Steel		—	—	—
TGRA	Aluminum Alloy	1045 Carbon Steel or Equivalent	Spring Steel	Steel	Clear Anodize	Electroless Nickel Plating	—
TGRAU	Aluminum Alloy	304 Stainless Steel	304 Stainless Steel		Urethane Lining (Natural Color) Shore A90	—	—
TGRSU	304 Stainless Steel	304 Stainless Steel	304 Stainless Steel		—	—	—

Core Only

Urethane Lined

6.3 / (1.6 /)



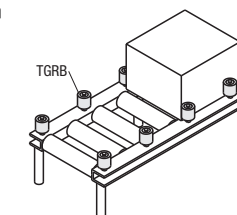
Please use these products for vertical applications.

Part Number	Type	D	L	N	d	I	C	B	r	n	m	dh	D ₁	F	M (Coarse)	W	Used Bearing	Retaining Ring Standards		Available Types				
																		Shape	JIS Nominal	TGRB	TGRS	TGRA	TGRAU	TGRSU
Core Only TGRB (1045 Carbon Steel)	Urethane TGRAU (Aluminum Alloy)	20	25	10	6	9	10	8	5	2	0.7	10	15	5	6	8	696ZZ	E Type	No.5	•	•	•	—	—
		25	30 40 50																	•	•	•	•	•
		30	20 25																	•	•	•	•	•
		35	30 40 50																	•	•	•	•	•
		40	20 25																	•	•	•	•	•
		50	30 40 50																	•	•	•	•	•
Core Only TGRS (304 Stainless Steel)	Urethane TGRSU (304 Stainless Steel)	20	25	10	8	12	12	10	7	0.9	15	19	6	8	10	698ZZ	E Type	No.7	•	•	•	•	•	
		25	30 40 50																•	•	•	•	•	
		30	20 25																•	•	•	•	•	
		35	30 40 50																•	•	•	•	•	
		40	20 25																•	•	•	•	•	
		50	30 40 50																•	•	•	•	•	
Core Only TGRA (Aluminum Alloy)	Urethane TGRAU (Aluminum Alloy)	20	25	10	12	18	18	14	11.5	1.15	24	28	8	12	14	6001ZZ	C Type	No.10	•	•	•	•	•	
		25	30 40 50																•	•	•	•	•	
		30	20 25																•	•	•	•	•	
		35	30 40 50																•	•	•	•	•	
		40	20 25																•	•	•	•	•	
		50	30 40 50																•	•	•	•	•	
Core Only TGRAU (Aluminum Alloy)	Urethane TGRAU (Aluminum Alloy)	20	25	10	12	18	18	14	11.5	1.15	24	32	10	12	14	6201ZZ	C Type	No.12	•	•	•	•	•	
		25	30 40 50																•	•	•	•	•	

Part Number Example: TGRS30 - L

Application Example

Part Number Alterations: TGRB25 - L - (NC)



Alteration	Code	Spec.
N Dimension Changes	NC	Ordering Code: NC15 NC=1 mm Increment ① 5 ≤ NC ≤ 30 ② Dimensions other than N dim. will not change