

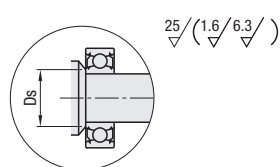
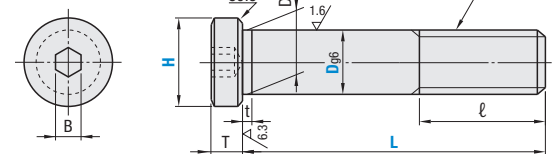
Bearing Shaft Screws

Selectable L

Bearing Shaft Screws – Selectable L

BGP
BGPM
BGPS

Type	Material	Surface Treatment
BGP	1045 Carbon Steel or Equivalent	Black Oxide
BGPM	1045 Carbon Steel or Equivalent	Electroless Nickel Plating
BGPS	304 Stainless Steel	—

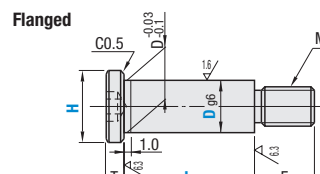
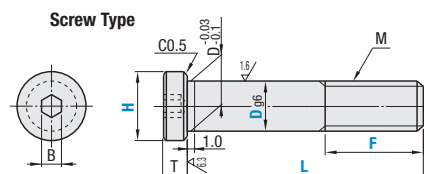


RoHS10

Part Number Type	D	H	L	T	B	M (Coarse)	I	t	Ds	Applicable Bearing		
BGP BGPM BGPS	4	7	15 20 25	2	2	M4	6	0.7	6	674 694 624		
	5	8	15 20 25		2.5	M5			7	695 605 625 675		
	6	9	20 25 30		3	M6			8	696 606 626 676		
	8	11	20 25 30		4	M8			10	698 608 628 678		
	10	13	20 25 30		5	M10			12	12	6800	
		14	20 25 30							13	6900 6000	
		17	25 30 40							16	6200	
		15	20 25 30							14	6801	
		12	16							25 30 40	15	6901 6001
		18	30 40 50							17	6201	
	15	18	30 40 50		6	M12			16	17	6802	
		19	40 50 60							18	6902 6002	
		21	40 50 60	20			6202					
		20	30 40 50	19			6803					
		17	22	40 50 60			21	6903 6003				
		24	40 50 60	23			6203					
	20	23	30 40 50	8	M16	20	22	6804				
		25	40 50 60				24	6904 6004				
		27	40 50 60				26	6204				
		28	30 40 50				27	6805				
		25	29				40 50 60	28	6905			
		31	40 50 60				30	6005				
	30	33	40 50 60	12	M24	20	32	6205				
		33	40 50 60				32	6806				
		35	40 50 60				34	6906				
		38	40 50 60				37	6006 6206				
		37	6006				6206					

Bearing Shaft Screws – Configurable L

Type	Screw Type	Flanged	Material	Surface Treatment
BGPL	BGSP	1045 Carbon Steel or Equivalent	Black Oxide	
BGPM	BGSPM	1045 Carbon Steel or Equivalent	Electroless Nickel Plating	
BGPSL	BGPS	304 Stainless Steel	—	



Screw Type

Part Number Type	D	H	L	F	T	B	M (Coarse)	Ds
BGPL BGPM BGPSL	4	7	15-25	M≤F=L-5	2	2	M4	6
	5	8			2	2.5	M5	7
	6	9			2	3	M6	8
	8	11			3	4	M8	10
	10	13			3	5	M10	12
		14			3	5	M10	13
		17	25-40		3	5	M10	16
	12	15	20-30		3	6	M12	14
		16	25-40		3	6	M12	15
		18	30-50		3	6	M12	17

Flanged

Part Number Type	D	H	L	T	B	M (Coarse)	F	Ds
BGSP BGSPM BGSPS	4	7	3.0-20.0	2	2	M2.5	5	6
	5	8		2	2.5	M3	6	7
	6	9		2	3	M4	7	8
	8	11		3	4	M6	9	10
	10	13		3	5	M8	12	12
		14		3	5	M8	12	13
		17	3	5	M8	12	16	
	12	15	3	6	M8	12	14	
		16	3	6	M8	12	15	
		18	3	6	M8	12	17	

Part Number Example

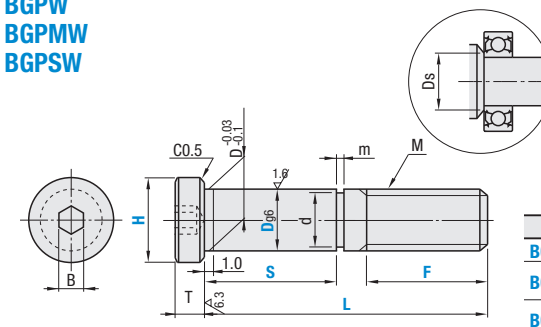
Part Number	-	H	-	L	-	F
BGP10	-	14	-	L30	-	
BGPL10	-	14	-	L30	-	F10
BGPS4	-	7	-	L10	-	

Bearing Shaft Screws with Retaining Rings

Bolt / Flanged

Bearing Shaft Screws with Retaining Rings – Bolt

BGPW
BGPW
BGPSW



When F≥L-S-a, Retaining Ring grooves are machined into incomplete threads. Please select carefully.

M	a
M4	2.1
M5	2.3
M6	2.7
M8	3.4
M10	4.15
M12	4.65

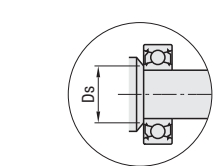
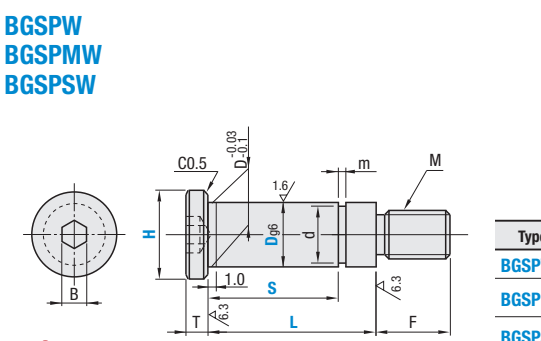
Type	Material	Surface Treatment	Accessories
BGPW	1045 Carbon Steel or Equivalent	Black Oxide	1 Retaining Ring (304 Stainless Steel)
BGPW	1045 Carbon Steel or Equivalent	Electroless Nickel Plating	
BGPSW	304 Stainless Steel	—	

Part Number Type	D	H	L	S	F	T	B	M (Coarse)	m	d	Ds	Applicable Bearing	Included Retaining Ring				
BGPW BGPW BGPSW	4	7	15-25	5 10 15	F≥M F≤L-S-2	2	2	M4	0.7	+0.1 0	3	674 694 624	E Type				
	5	8	15-25	5 10 15			4	695 605 625 675			No. 3						
	6	9	20-30	10 15 20			5	696 606 626 676				No. 4					
	8	11	20-30	10 15 20			F≥M F≤L-S-3	3			4	M8	1.15	+0.14 0	7	698 608 628 678	No. 5
	10	13	20-30	10 15 20							8	6800			C Type		
	12	14	20-30	10 15 20							9.6	6900 6000				No. 7	
	17	25-40	15 20 25	10 15 20	16	6200			No. 10								
	15	20-30	10 15 20	14	6801	No. 12											
	16	25-40	10 15 20	15	6901 6001												
	18	30-50	15 20 25	17	6201												

For details or E and C Type Retaining Rings, please see P.4020-4021.

Bearing Shaft Screws with Retaining Rings – Flanged

BGSPW
BGSPW
BGSPSW



Type	Material	Surface Treatment	Accessories
BGSPW	1045 Carbon Steel or Equivalent	Black Oxide	1 Retaining Ring (304 Stainless Steel)
BGSPW	1045 Carbon Steel or Equivalent	Electroless Nickel Plating	
BGSPSW	304 Stainless Steel	—	

Part Number Type	D	H	L	S	F	T	B	M (Coarse)	m	d	Ds	Applicable Bearing	Included Retaining Ring				
BGSPW BGSPW BGSPSW	4	7	15-25	5-15	5	2	2	M2.5	0.7	+0.1 0	3	674 694 624	E Type				
	5	8	15-25	5-15			4	695 605 625 675			No. 3						
	6	9	20-30	10-20			5	696 606 626 676				No. 4					
	8	11	20-30	10-20			9	3			4	M6	1.15	+0.14 0	7	698 608 628 678	No. 5
	10	13	20-30	10-20							8	6800			C Type		
	12	14	20-30	10-20							9.6	6900 6000				No. 7	
	17	25-40	15-25	10-20	16	6200			No. 10								
	15	20-30	10-20	14	6801	No. 12											
	16	25-40	10-20	15	6901 6001												
	18	30-50	15-25	17	6201												

For details or E and C Type Retaining Rings, please see P.4020-4021.

Part Number Example

Part Number	-	H	-	L	-	S	-	F
BGPMW5	-	8	-	L25	-	S15	-	F8
BGPSW8	-	11	-	L27	-	S10	-	