

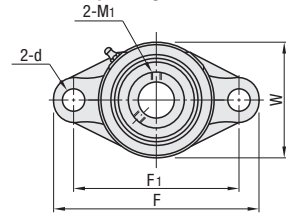
# Pillow Blocks

## Cast Housings Flanged

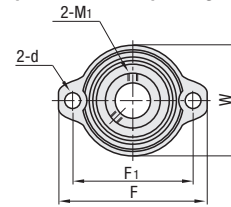
Pillow Blocks – Cast Housing Flanged



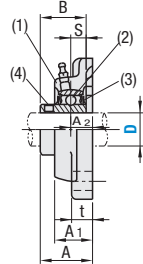
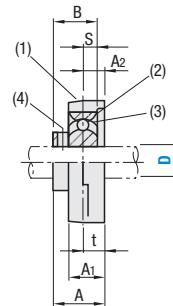
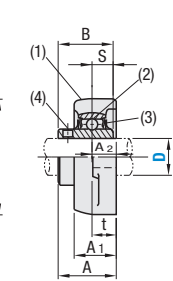
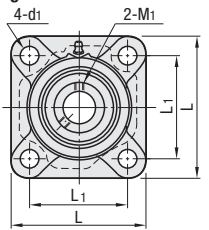
**HDH**  
Diamond Shape Flanged



**HDHCP**  
Compact Diamond Shape Flanged



**HDF**  
Square Flanged



Accuracy: JIS B 1558  
JIS B 1514  
JIS B 1559

Bearing Inner Diameter Tolerance: H7 (Clearance Fit)

Operating Temperature: -15~+100°C

Components	Material
(1) Housing	Alloy Cast Iron Class No.30
(2) Bearing	52100 Bearing Steel
(3) Rubber Seal	Nitrile Rubber (NBR)
(4) Set Screw	4137 Alloy Steel or Equivalent

kgf=Nx0.101972

Part Number	JIS Nominal		F	F <sub>1</sub>	W	L	L <sub>1</sub>	t	A	A <sub>1</sub>	A <sub>2</sub>	d	d <sub>1</sub>	B	S	Basic Load Rating (kN)		Set Screw			Mass (g)			
	Type	HDH														HDF	Cr (Dynamic)	Cor (Static)	M <sub>1</sub>	Tightening Torque (N-cm)	Axial Load Capacity (N)	HDH	HDF	
12	UCFL201	UCF201																						
15	UCFL202	UCF202	113	90	60	86	64	12	33.3	25.5	15	12		31.0	12.7	12.8	6.6	M6 x 0.75	392	640		470	630	
17	UCFL203	UCF203																						
20	UCFL204	UCF204																						
25	UCFL205	UCF205	130	99	68	95	70	14	35.8	27.0	16			34.1	14.3	14.0	7.9		490					
30	UCFL206	UCF206	148	117	80	108	83	16	40.2	31.0	18			38.1	15.9	19.6	11.3							
35	UCFL207	UCF207	161	130	90	117	92	16	44.4	34	19			42.9	17.5	25.9	15.4							
40	UCFL208	UCF208	175	144	100	130	102	18	51.2	36	21			49.2	19	29.3	17.9	M8 x 1	1180					
45	UCFL209	UCF209	188	148	108	137	105	18	52.2	38	22			49.2	19	33.0	20.5							
50	UCFL210	UCF210	197	157	115	143	111	18	54.6	40	22			51.6	19	35.5	23.2	M10 x 1.25	2350	3550	2200	2360		

kgf=Nx0.101972

Part Number	Type	D	F	F <sub>1</sub>	W	t	A	A <sub>1</sub>	A <sub>2</sub>	d	B	S	Basic Load Rating (kN)		Set Screw			Mass (g)
													Cr (Dynamic)	Cor (Static)	M <sub>1</sub>	Tightening Torque (N-cm)	Axial Load Capacity (N)	
12	HDHCP	81	63.5	56	9.5	25.5	18	9.5	7	22	6		9.55	4.8	M5 x 0.8	250	476	280
15																		270
17																		250
20		90	71.5	63	11	28.7	20	11	10	24.7	7		12.8	6.6			1280	300
25		95	76	69	11	30.5	20.0	11	10	27	7.5		14.0	7.9			1400	400
30		113	90.5	79	12	34.3	22.5	12	12	30.3	8		19.6	11.3	M6 x 0.75	490	1960	580

Part Number Example

Part Number	HDH20
	HDF25
	HDHCP25

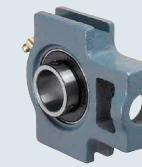
# Pillow Blocks

## Cast Housings with Pilot / Cast Housings Take-Up

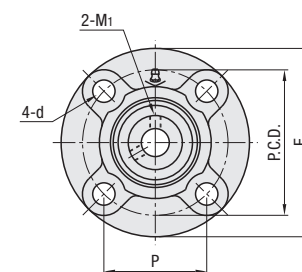
Pillow Blocks – Cast Housings with Pilot



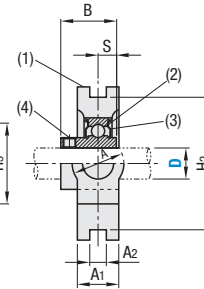
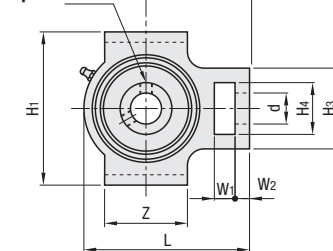
Pillow Blocks – Cast Housings Take-Up



**HDMC**  
Pilot



**HDTKP**  
Take-Up



Accuracy: JIS B 1558  
JIS B 1514  
JIS B 1559  
Bearing Inner Diameter Tolerance: H7 (Clearance Fit)  
Operating Temperature: -15 ~ +100°C

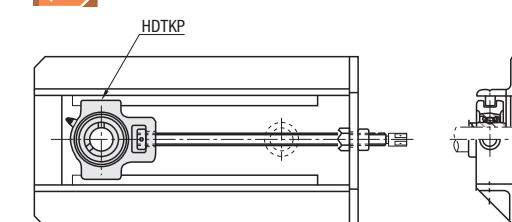
Components	Material
(1) Housing	Cast Iron Class No. 30
(2) Bearing	52100 Bearing Steel
(3) Rubber Seal	Nitrile Rubber (NBR Nitrile Rubber)
(4) Set Screw	4137 Alloy Steel or Equivalent

kgf=Nx0.101972

Part Number	JIS Nominal	F	P	P.C.D.	t	A	A <sub>1</sub>	A <sub>2</sub>	J	E	d	B	S	Basic Load Rating (kN)		Set Screw			Mass (g)	
														Cr (Dynamic)	Cor (Static)	M <sub>1</sub>	Tightening Torque (N-cm)	Axial Load Capacity (N)		
12	UCFC201																			890
15	UCFC202	100	55.1	78	7	28.3	20.5	10	5	62	12	31.0	12.7	12.8	6.6	M6 x 0.75	392	640		870
17	UCFC203																			860
20	UCFC204																			840
25	UCFC205	115	63.6	90	7	29.8	21	10	6	70	12	34.1	14.3	14.0	7.9					1400
30	UCFC206	125	70.7	100	8	32.2	23	10	8	80		38.1	15.9	19.6	11.3					1960
35	UCFC207	135	77.8	110	9	36.4	26	11	8	90	14	42.9	17.5	25.9	15.4					2590
40	UCFC208	145	84.8	120	9	41.2	26	11	10	100		49.2	19	29.3	17.9	M8 x 1	1180			2930
45	UCFC209	160	93.3	132	14	40.2	26	10	12	105	16	49.2	19	33.0	20.5					3300
50	UCFC210	165	97.6	138	14	42.6	28	10	12	110	16	51.6	19	35.5	23.2	M10 x 1.25	2350	3550	2710	

kgf=Nx0.101972

Part Number	JIS Nominal	H <sub>1</sub>	H <sub>2</sub>	H <sub>3</sub>	H <sub>4</sub>	L	L <sub>1</sub>	A	A <sub>1</sub>	A <sub>2</sub>	W <sub>1</sub>	W <sub>2</sub>	Z	d	B	S	Basic Load Rating (kN)		Set Screw			Mass (g)		
																	Cr (Dynamic)	Cor (Static)	M <sub>1</sub>	Tightening Torque (N-cm)	Axial Load Capacity (N)			
12	UCT201																						790	
15	UCT202																							770
17	UCT203	89	76	51	32	94	61	32	21					31.0	12.7	12.8	6.6	M6 x 0.75	392	640		760		
20	UCT204																						740	
25	UCT205					97	62	32	24					34.1	14.3	14.0	7.9						820	
30	UCT206	102	89	56	37	113	70	37	28					38.1	15.9	19.6	11.3						1300	
35	UCT207					129	78	30	30					42.9	17.5	25.9	15.4						1600	
40	UCT208	114				144	88	33	33					49.2	19	29.3	17.9	M8 x 1	1180				2400	
45	UCT209					144	87	49	35	16	19			49.2	19	33.0	20.5						2400	
50	UCT210	117	102	83	49	149	90	37	37					51.6	19	35.5	23.2	M10 x 1.25	2350	3550	2500			



### HDMC

With the pilot (dia. E part) on the plate mounting side, the ball bearing misalignment can be prevented even if the mounting screws become loose after installation.

### HDTKP

Tension can be adjusted by sliding the guide groove A<sub>2</sub>. Suitable for adjusting the tension of a belt conveyor, etc.