

Support Units (Fixed Side, Square)

Standard

Support Units – Fixed Side, Square Standard



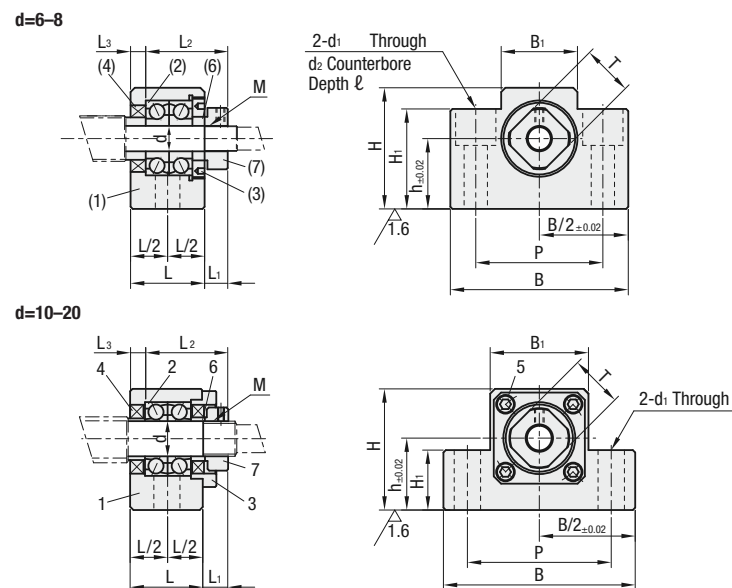
RoHS 10

Type		Material		Surface Treatment
Fixed Side Only	Fixed Side & Support Side SET	(1), (3)	(6), (7)	(1), (3), (6), (7)
C-BSW	C-BSW-SET	EN 1.1191 Equiv.	EN 1.0038 Equiv.	Black Oxide

Component Details

Number	Part Name	Qty
(1)	Bearing Housing	1
(2)	Over Sea Manufactured Angular Contact Bearing Grade 5	1 Set
(3)	Cover	1
(4)	Oil Seal	2
(5)	Hex Socket Head Cap Screw	4
(6)	Collar	2
(7)	Bearing Nut (with Set Piece)	1

- ⓘ d=6 and 8 come with one Oil Seal 4.
- ⓘ Do not disassemble 1, 2, 3, 4 and 5, as they must remain assembled.
- ⓘ When used together with a MISUMI ball screw, there is one support unit accessory collar spare.



Part Number		Support Side SET	d	L	L ₁	L ₂	L ₃	B	H	h	B ₁	H ₁	P	d ₁	d ₂	l	M (Fine Thread)	T	Oil Seal Applicable Shaft Dia.		
Type	No.																				
C-BSW	6	-SET (Only when purchased in Sets)	6	20	5.5	22	3.5	42	25	13	18	20	30	5.5	9.5	11	M6 x 0.75	12	9.5		
	8S		8	23	7	26	4	52	32	17	25	26	38	6.6	11	11	M8 x 1.0	14	10		
	8																			11.5	
	10S		10	24	6	29.5	6	70	43	25	36	24	52	9				M10 x 1.0	16	12	
	10																			14	
	12																		M12 x 1.0	19	15
	15S		15	25	6	36	5	80	49	30	41	25	60	11				M15 x 1.0	22	19.5	
	15																			20	
20	20	42	10	50	10	95	58										M20 x 1.0	30	25		

Part Number Example

Part Number: **C-BSW15** (Fixed-side single type)
C-BSW15-SET (SET part type)

Application Example

Elevator Device

- Stocker elevator device
- Lift in stepped increments for every work insertion
- Medium precision/low frequency positioning

ⓘ Store Accessories with care since they are required when assembling.

Support Units (Support Side, Round)

Standard

Support Units – Support Side, Round Standard

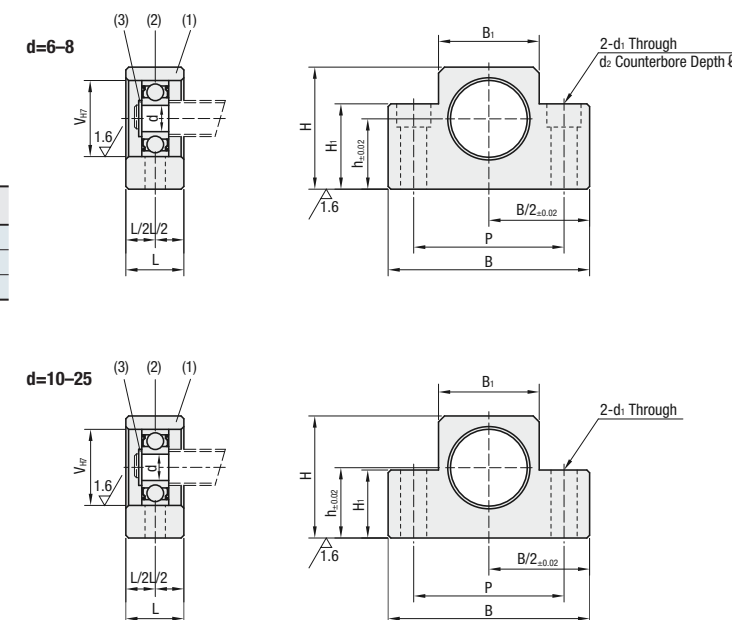


RoHS 10

Type	Material	Surface Treatment
C-BUN	EN 1.1191 Equiv.	Black Oxide

Component Details

Number	Part Name	Qty
(1)	Housing	1
(2)	Oversea manufactured radial bearing	1
(3)	Retaining Ring (STWN, S)	1



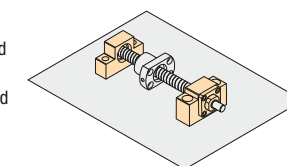
Part Number		d	L	B	H	h	B ₁	H ₁	P	V	d ₁	d ₂	l	Bearing	Retaining Ring														
Type	No.																												
C-BUN	6	6	20	42	25	13	18	20	30	17	5.5	9.5	11	B606ZZ	STWN, S6														
	8															14	52	32	17	25	26	38	6.6	11	11	B608ZZ	STWN, S8		
	10															8	70	43	25	36	24	52	22	9	—	—	B6000ZZ	STWN, S10	
	12															10	80	49	30	41	25	60	26	—	—	—	B6002ZZ	STWN, S15	
	15															15	95	58	30	56	25	75	32	11	—	—	—	B6204ZZ	STWN, S20
	20															20	26	95	58	56	25	75	47	11	—	—	—	—	—

Part Number Example

Part Number: **C-BUR10** (Support side, separate item)

SET Part Overview

- For customers using in conjunction with fixed side and support side.
- We recommend a SET, which allows the fixed side and support side to be ordered as one set.
- 5% price reduction when ordering in SETs.



SET Part

SET Part Number	SET Parts	
	Fixed Side Part Number	Support Side Part Number
C-BSW6-SET	C-BSW6	C-BUN6
C-BSW8S-SET	C-BSW8S	C-BUN6
C-BSW8-SET	C-BSW8	C-BUN6
C-BSW10S-SET	C-BSW10S	C-BUN10
C-BSW10-SET	C-BSW10	C-BUN10
C-BSW12-SET	C-BSW12	C-BUN12
C-BSW15-SET	C-BSW15	C-BUN15
C-BSW15S-SET	C-BSW15S	C-BUN15
C-BSW20-SET	C-BSW20	C-BUN20

