

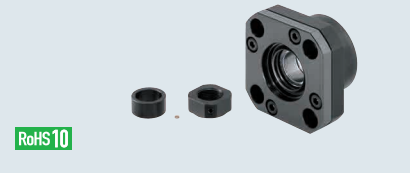
Support Units (Round)

Fixed Side, Standard Type

The Standard Type uses the preloaded JIS 5 class Angular Contact Bearings. It is recommended to use for high-accuracy and high-speed precision applications.

Support Units (Fixed Side) Standard Type

(Industry Standard for High Speed Applications)



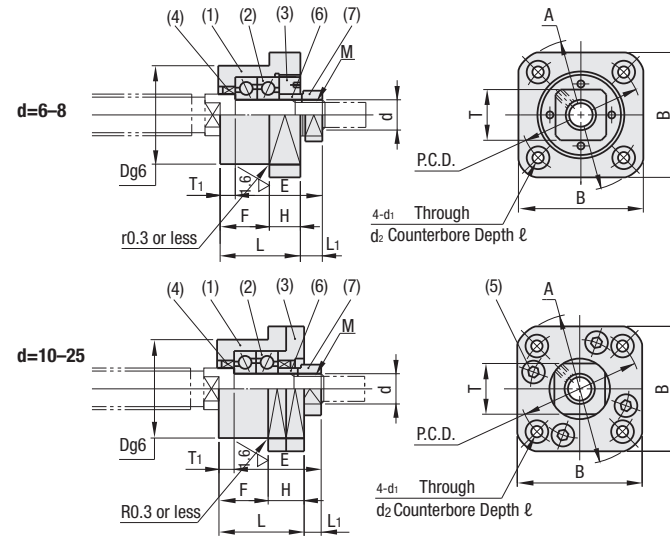
Component Details

No.	Part Name	Quantity
(1)	Bearing Housing	1
(2)	Angular Contact Bearing Class 5	1 Set
(3)	Cover	1
(4)	Oil Seal	2
(5)	Hexagon Socket Head Cap Screw*	4
(6)	Collar	1
(7)	Clamping Nut (with Set Piece)	1

- Oil Seal (4) is not included in No.6.
- No.6L, 8S and 8 come with one Oil Seal (4).
- Do not disassemble (1), (2), (3) and (4), as they must remain as an assembled unit.
- BSWR bearing is filled with low particle generation grease.
- *Screws (5) for BRWR and BRWN are Stainless Steel Type.

Type	Material		Surface Treatment
	(1), (3)	(6), (7)	(1), (3), (6), (7)
BRW	1045 Carbon Steel	1018 Carbon Steel	Black Oxide
BRWN	1045 Carbon Steel	1018 Carbon Steel	Electroless Nickel Plating
BRWR	1045 Carbon Steel	1018 Carbon Steel	Low Temperature Black Chrome Plating

For No.8S and 10S, the I.D. of oil seal is smaller than the previous No.8S and No.10S versions.



Part Number	Type	No.	d	L	H	F	E	D	A	P.C.D.	B	L ₁	T ₁	d ₁	d ₂	ℓ	M (Fine)	T	Oil Seal Applicable Shaft Dia.
			BRW	6L	6	20	7	13	22.5	22	36	28	28	6	3.5	3.4	6.5	4	M6 x 0.75
BRWN	6	6	20	7	13	22.5	22	35	28	28	6	3.5	2.9	5.5	3.5	M6 x 0.75	12	—	
BRWR	8S	8	23	9	14	26	28	43	35	35	7	4	3.4	6.5	4	M8 x 1.0	14	10	
	8	8	23	9	14	26	28	43	35	35	7	4	3.4	6.5	4	M8 x 1.0	14	11.5	
	10S	10	29	13	16	29.5	34	52	42	42	5.5	5	4.5	8	6	M10 x 1.0	17	12	
	10	10	29	13	16	29.5	34	52	42	42	5.5	5	4.5	8	6	M10 x 1.0	17	14	
	12	12	32	15	17	38	40	63	50	52	12	6	5.5	9.5	5.5	M12 x 1.0	19	15	
	15	15	32	15	17	38	40	63	50	52	12	6	5.5	9.5	5.5	M15 x 1.0	22	20	
	20	20	52	22	30	52	57	85	70	68	10	10	6.6	11	6.5	M20 x 1.0	30	25	
	25	25	57	27	30	59	63	98	80	79	12	10	9	15	8.5	M25 x 1.5	35	31	

- Low Temperature Black Chrome Plating products are filled with low particle generation grease for cleanrooms.
- Store Accessories with care. They are required when assembling.

Part Number Example	Part Number
	BRW15

Support Units (Fixed Side)

Economy / Radial Bearing Type

Support Units (Fixed Side) Economy

(Economical for Intermediate and Low Speed Applications)



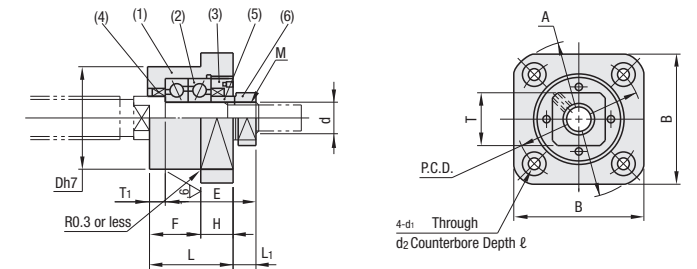
Component Details

No.	Part Name	Quantity
(1)	Bearing Housing	1
(2)	Angular Contact Bearing Class 5	1 Set
(3)	Cover	1
(4)	Oil Seal	2
(5)	Collar	1
(6)	Clamping Nut (with Set Piece)	1

- Do not disassemble (1), (2), (3), and (4), as they must remain as an assembled unit.
- BRWER bearing is filled with low particle generation grease.

Type	Material		Surface Treatment
	(1), (3)	(5), (6)	(1), (3), (5), (6)
BRWE	1045 Carbon Steel	1018 Carbon Steel	Black Oxide
BRWEM	1045 Carbon Steel	1018 Carbon Steel	Electroless Nickel Plating
BRWER	1045 Carbon Steel	1018 Carbon Steel	Low Temperature Black Chrome Plating

For No.10S, the I.D. of oil seal is smaller than the previous No.10S version.



Part Number	Type	No.	d	L	H	F	E	D	A	P.C.D.	B	L ₁	T ₁	d ₁	d ₂	ℓ	M (Fine)	T	Oil Seal Applicable Shaft Dia.
			BRWE	10S	10	26	10	16	29.5	34	52	42	42	8.5	5	4.5	8	4.5	M10 x 1.0
	10	10	26	10	16	29.5	34	52	42	42	8.5	5	4.5	8	4.5	M10 x 1.0	17	14	
	12	12	30	13	17	38	40	63	50	52	14	6	5.5	9.5	5.5	M12 x 1.0	19	15	
	15	15	30	13	17	38	40	63	50	52	14	6	5.5	9.5	5.5	M15 x 1.0	22	20	
	20	20	48	18	30	52	57	85	70	68	14	10	6.6	11	6.5	M20 x 1.0	30	25	
	25	25	54	24	30	59	63	98	80	79	15	10	9	15	8.5	M25 x 1.5	35	31	

Support Units (Fixed Side) Radial Bearing

(Economical for Low Speed Applications)



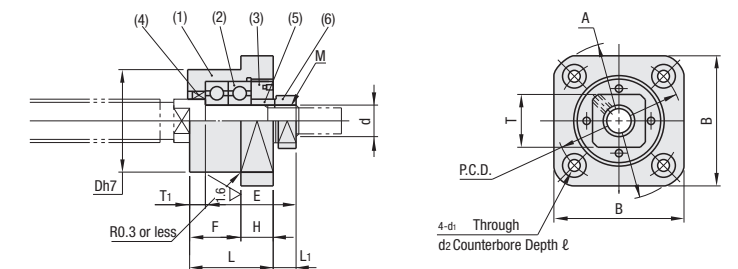
Component Details

No.	Part Name	Quantity
(1)	Bearing Housing	1
(2)	Radial Bearing	1 Set
(3)	Cover	1
(4)	Oil Seal	1
(5)	Collar	1
(6)	Clamping Nut (With Set Piece)	1

- Do not disassemble (1), (2), (3), and (4), as they must remain as an assembled unit.

Type	Material		Surface Treatment
	(1), (3)	(5), (6)	(1), (3), (5), (6)
BRWZ	1045 Carbon Steel	1018 Carbon Steel	Black Oxide
BRWZM	1045 Carbon Steel	1018 Carbon Steel	Electroless Nickel Plating

- Oil Seal (4) is not included in d=6.
- For No.8S and 10S, the I.D. of oil seal is smaller than the previous No.8S and No.10S versions.
- It is preloaded to withstand thrust load. Keep rotational speed within 3,000 rpm.



Part Number	Type	No.	d	L	H	F	E	D	A	P.C.D.	B	L ₁	T ₁	d ₁	d ₂	ℓ	M (Fine)	T	Oil Seal Applicable Shaft Dia.
			BRWZ	6	6	20	7	13	22.5	22	35	28	28	6	3.5	2.9	5.5	3.5	M6 x 0.75
	8S	8	23	9	14	26	28	43	35	35	7	4	3.4	6.5	4	M8 x 1.0	14	10	
	8	8	23	9	14	26	28	43	35	35	7	4	3.4	6.5	4	M8 x 1.0	14	11.5	
	10S	10	26	10	16	29.5	34	52	42	42	8.5	5	4.5	8	4.5	M10 x 1.0	17	12	
	10	10	26	10	16	29.5	34	52	42	42	8.5	5	4.5	8	4.5	M10 x 1.0	17	14	
	12	12	30	13	17	38	40	63	50	52	14	6	5.5	9.5	5.5	M12 x 1.0	19	15	
	15	15	30	13	17	38	40	63	50	52	14	6	5.5	9.5	5.5	M15 x 1.0	22	20	
	20	20	48	18	30	52	57	85	70	68	14	10	6.6	11	6.5	M20 x 1.0	30	25	

Part Number Example	Part Number
	BRWE15 BRWZ15