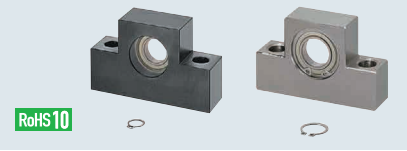


Support Units (Square)

Support Side / Support Side with Damper

Support Units – Support Side Type

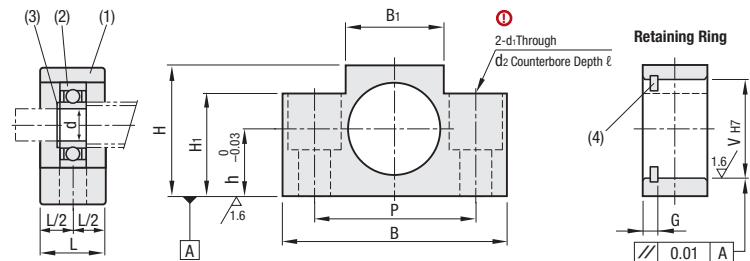


No.	Part Name	Quantity
(1)	Housing	1
(2)	Radial Bearing	1
(3) (4)	Retaining Ring*	1

Ⓢ BUNR bearing is stainless steel type filled with low particle generation grease.
*Retaining ring (3), (4) of BUNR and BUNM are stainless steel type.

Type	Material	Surface Treatment
Standard	1045 Carbon Steel	Black Oxide
With Retaining Ring		Electroless Nickel Plating
BUN		Low Temperature Black Chrome plating
BUNM		
BUNR		

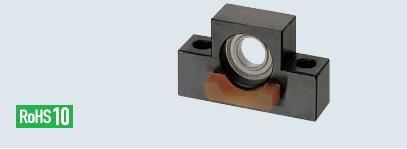
Ⓢ No.1022–25 is not counterbored.



Part Number Type	No.	d	L	B	H	h	B ₁	H ₁	P	V	d ₁	d ₂	ℓ	Retaining Ring		Bearings Type	Retaining Ring				
														G	Retaining Ring						
BUN BUNM BUNR	6	6	12	42	25	13	18	20	30	17	5.5	9.5	11	3	RTWN / S17	B606ZZ	STWN / S6				
	8																	15	52	32	17
	1022	8	20	70	40	22	36	21	52	22	9	—	—	3	RTWN / S22	B608ZZ	STWN / S8				
	10																	43	25	24	
	1223																	41	23	22	26
	12																	43	25	24	
	1526	15	80	80	46	26	41	21	60	32	11	—	—	4	RTWN / S32	B6002ZZ	STWN / S15				
	1528																	48	28	23	60
	15																	50	*30	25	25
	20																	56	30	75	47
25	25	30	105	68	35	66	25	85	52	4.5	RTWN / S52	B6205ZZ	STWN / S25								

Ⓢ Take care in combining No.20 with BSSZ(K)2510, BSSR(K)2510 and BSST2510 Ball Screws. The Ball Screw Nut may come in contact with the bottom surfaces.
Ⓢ BTNM unavailable in sizes 1022, 1223, 1526, 1528

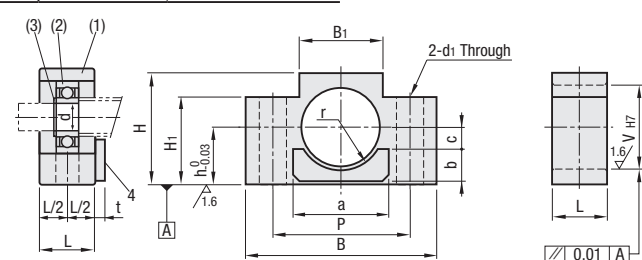
Support Units (Support Side with Damper)



No.	Part Name	Quantity
(1)	Housing	1
(2)	Radial Bearing	1
(3)	Retaining Ring*	1
(4)	Urethane Damper (Shore A70)	Ⓢ 1

Ⓢ (4) is adhesive bonded to the housing.

Type	Material	Surface Treatment
BUND	1045 Carbon Steel	Black Oxide



Part Number Type	No.	d	L	B	H	h	B ₁	H ₁	P	V	d ₁	Damper Dimension					Bearing Type	Retaining Ring				
												a	b	c	r	t						
BUND	1022	8	20	70	40	22	36	21	52	22	9	10	34	10	6	12	B608ZZ	STWN8				
	10																		43	25	24	
	1223	10	20	70	41	23	36	22	52	26	9	10	46	12	7	15.5	B6000ZZ	STWN10				
	12																		43	25	24	
	1526																		46	26	21	26
	1528																		48	28	23	60
	15	15	80	80	50	25	41	25	60	32	11	10	50	15	10	18	B6002ZZ	STWN15				
	1528																		48	28	23	60
	15																		50	*30	25	25
	20																		56	30	75	47
25	25	30	105	68	35	66	25	85	52	4.5	RTWN / S52	B6205ZZ	STWN25									



Part Number Example

Part Number
BSWD10
BUND15

Support Units (Square, Support Side)

Compact / Low Profile Type / Mounting Hole Narrow Pitch

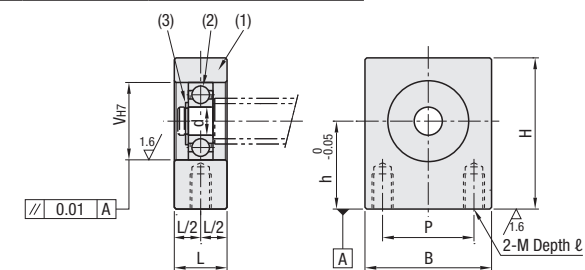
Support Units (Support Side) Compact



No.	Part Name	Quantity
(1)	Housing	1
(2)	Bearing Type	1
(3)	Retaining Ring*	1

*Retaining ring (3) of BUQM is Stainless Steel Type.

Type	Material	Surface Treatment
BUQ	1045 Carbon Steel	Black Oxide
BUQM		Electroless Nickel Plating



Part Number Type	No.	d	L	B	H	h	P	V	M	ℓ	Bearing Type	Retaining Ring
BUQM	10	8	20	36	43	25	26	22	6	10	B608ZZ	STWN / S8
	12	10	46	52	30	34	26	26		10	B6000ZZ	STWN / S10
	15	15	46	52	30	34	32	32		12	B6002ZZ	STWN / S15

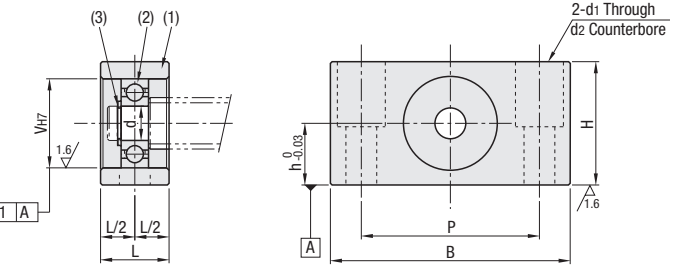
Support Units (Support Side) Low Profile



No.	Part Name	Quantity
(1)	Housing	1
(2)	Bearing Type	1
(3)	Retaining Ring*	1

*Retaining ring (3) of BUVM is Stainless Steel Type.

Type	Material	Surface Treatment
BUV	1045 Carbon Steel	Black Oxide
BUVM		Electroless Nickel Plating



Part Number Type	No.	d	L	B	H	h	P	V	d ₁	d ₂	ℓ	Bearing Type	Retaining Ring
BUVM	8	6	15	52	28	14	38	17	6.6	11	15	B606ZZ	STWN / S6
	10	8	20	70	36	18	52	22	9	14	19	B608ZZ	STWN / S8
	12	10	80	41	21	60	26	26					
	15	15	20	80	41	21	60	32	11	17	21	B6002ZZ	STWN / S15
	20	20	26	95	56	28	75	47	11	17	29	B6204ZZ	STWN / S20

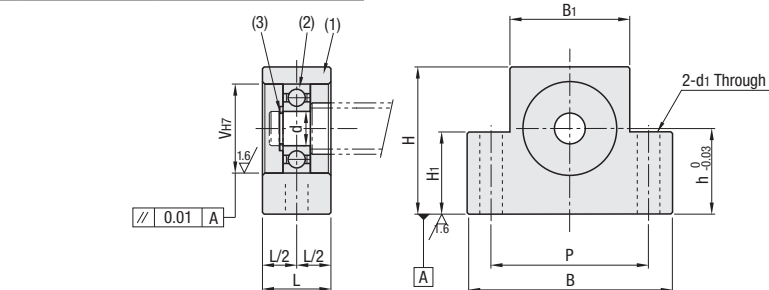
Support Units (Support Side) Mounting Hole – Narrow Pitch



No.	Part Name	Quantity
(1)	Housing	1
(2)	Bearing Type	1
(3)	Retaining Ring*	1

*Retaining ring (3) of BUAM is Stainless Steel Type.

Type	Material	Surface Treatment
BUA	1045 Carbon Steel	Black Oxide
BUAM		Electroless Nickel Plating



Part Number Type	No.	d	L	B	H	h	B ₁	H ₁	P	V	d ₁	Bearing Type	Retaining Ring
BUAM	12	10	20	70	43	25	35	24	54	26	6.6	B6000ZZ	STWN / S10
	15	15	20	70	48	28	40	27	54	32	6.6	B6002ZZ	STWN / S15



Part Number Example

Part Number
BUQ8
BUV10
BUAM12