


Cable Carriers

With Slit

Cable Carriers – With Slit



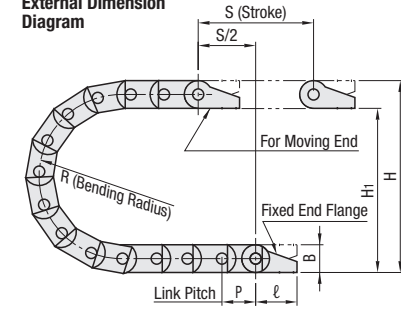
No need for link assembly

| Outer Radius Mount Main Body + Flange | Inner Radius Mount Main Body + Flange |
|--|--|
| SE045F | SZ045F |
| SE08F | SZ08F |
| SE14F | SZ14F |
| SE16F | SZ16F |
| SE200F | SZ200F |
| SE300F | SZ300F |

Cautions

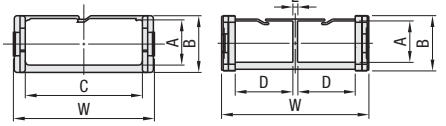
- ⊙ A package includes a cable carrier assembled with specified no. of links and two corresponding flanges (1 Moving End + 1 Fixed End).
- ⊙ Should be mounted as the fixed end of the flange on the lower part and the moving end on the upper part (Refer to the Positional Relationship in External Dimension Diagram)
- ⊙ Insert cables through slits (openings) on the external or internal circumference

External Dimension Diagram

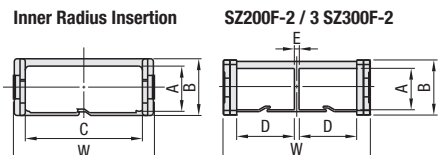


Cross-Section

Outer Radius Insertion SE200F-2 / 3 SE300F-2



Inner Radius Insertion SZ200F-2 / 3 SZ300F-2

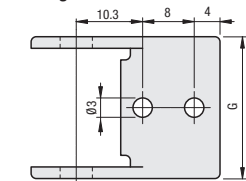


Material: Special Plastic **Operating Temp.:** -30°C–100°C **Flammability Standard:** UL94-V2

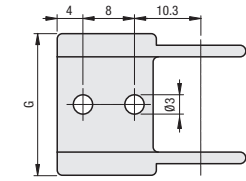
Flange Dimension Diagram

SE045F / SZ045F

Moving Ends

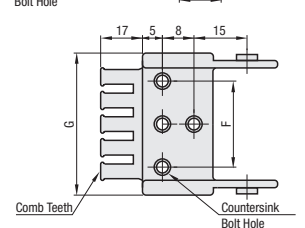
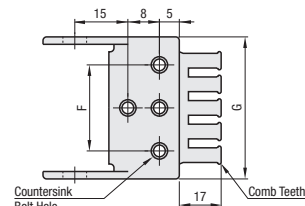


<Fixed Ends>

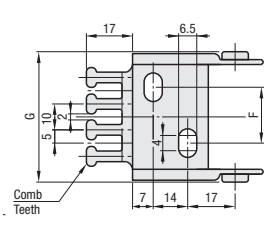
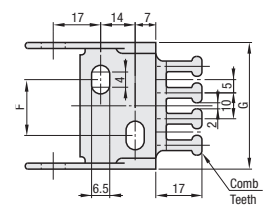


SE08F / SZ08F

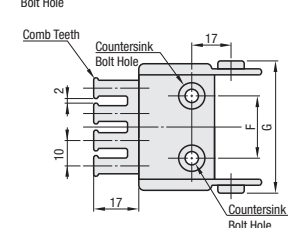
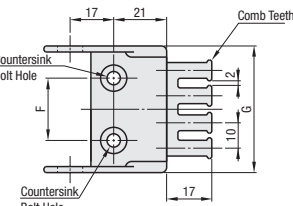
*The only bracket type available for SE08F/SZ08F-16 and SE08F/SZ08F-20 is the type with two center holes.



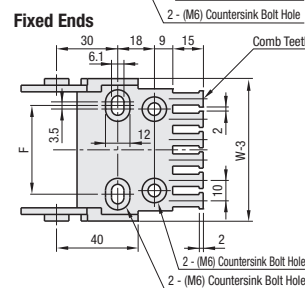
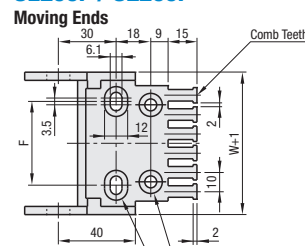
SE14F / SZ14F



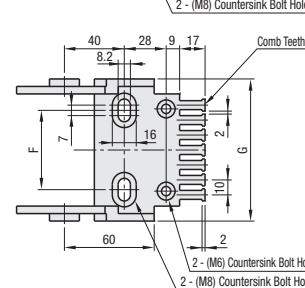
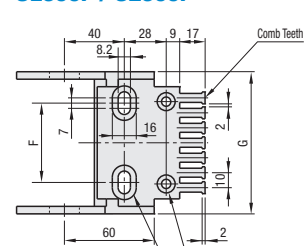
SE16F / SZ16F



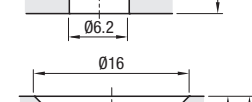
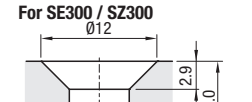
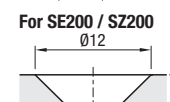
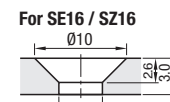
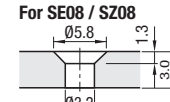
SE200F / SZ200F



SE300F / SZ300F



Details of Countersink Bolt Holes



Inserting Cables



Removing Cables



The cable can be removed by just pulling out.

Cable Carriers

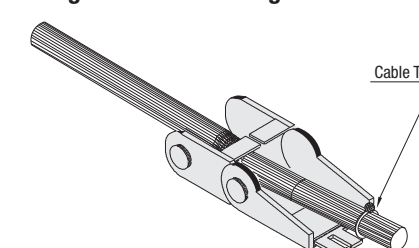
With Slit, *continued*

⊙ No. under Part Number is the difference between the C or D dimension.

| Part Number | Type | No. | Bending Radius | No. of Links | H (Mounting Height) | H1 | HF (Required Physical Height) | K (Arc + Margin) | P | B | ℓ |
|-----------------|------|-----|----------------|--------------|---------------------|-----|-------------------------------|------------------|------|------|------|
| SE045F / SZ045F | 16 | | 018 | 1-27 | 48.5 | 36 | 58.5 | 85 | 13 | 12.5 | 22.3 |
| | | | 028 | 1-29 | 68.5 | 56 | 78.5 | 115 | | | |
| | | | 038 | 1-31 | 88.5 | 76 | 98.5 | 150 | | | |
| SE08F / SZ08F | 20 | | 028 | 1-37 | 75 | 55 | 90 | 130 | 20 | 19.3 | 28 |
| | | | 038 | 1-38 | 95 | 75 | 110 | 160 | | | |
| | | | 048 | 1-40 | 115 | 95 | 130 | 195 | | | |
| | | | 028 | 1-30 | 81 | 56 | 91 | 150 | | | |
| | | | 038 | 1-30 | 101 | 76 | 111 | 185 | | | |
| SE14F / SZ14F | 3 | | 048 | 1-30 | 121 | 96 | 131 | 215 | 30.5 | 25 | 38 |
| | | | 075 | 1-30 | 175 | 150 | 185 | 300 | | | |
| | | | 100 | 1-33 | 225 | 200 | 235 | 380 | | | |
| | | | 100 | 1-30 | 159 | 120 | 174 | 250 | | | |
| SE16F / SZ16F | 3 | | 075 | 1-30 | 189 | 150 | 204 | 300 | 30.5 | 39 | 38 |
| | | | 100 | 1-33 | 239 | 200 | 254 | 380 | | | |
| | | | 055 | 1-28 | 145 | 110 | 185 | 276 | | | |
| | | | 075 | 1-30 | 185 | 150 | 225 | 346 | | | |
| SE200F / SZ200F | 3 | | 100 | 1-31 | 235 | 200 | 275 | 414 | 46 | 35 | 72 |
| | | | 150 | 1-35 | 335 | 300 | 375 | 578 | | | |
| | | | 200 | 1-38 | 435 | 400 | 475 | 742 | | | |
| | | | 075 | 1-29 | 215 | 148 | 255 | 400 | | | |
| | | | 100 | 1-30 | 265 | 198 | 305 | 500 | | | |
| SE300F / SZ300F | 2 | | 125 | 1-33 | 315 | 248 | 355 | 650 | 67 | 64 | 94 |
| | | | 150 | 1-33 | 365 | 298 | 405 | 725 | | | |
| | | | 200 | 1-36 | 465 | 398 | 505 | 875 | | | |
| | | | 250 | 1-38 | 565 | 498 | 605 | 1050 | | | |
| | | | 300 | 1-41 | 665 | 598 | 705 | 1225 | | | |
| | | | 075 | 1-30 | 185 | 150 | 225 | 346 | | | |
| | | | 100 | 1-31 | 235 | 200 | 275 | 414 | | | |
| | | | 150 | 1-35 | 335 | 300 | 375 | 578 | | | |

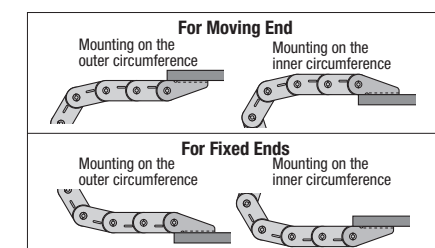
| Part Number | Type | No. | Bending Radius | A | B | C | D | E | W | F | G | Number of Comb Teeth | Per Link Weight (g) | |
|-----------------|------|-----|----------------|------|------|----|----|---|-------|----|------|----------------------|---------------------|---|
| SE045F / SZ045F | 16 | | 018 | 9.4 | 12.5 | 16 | — | — | 23 | — | 22 | — | 1.4 | |
| | | | 028 | | | | | | | | | | | |
| | | | 038 | | | | | | | | | | | |
| SE08F / SZ08F | 20 | | 028 | 14.6 | 19.3 | 16 | — | — | 24.2 | — | 24.2 | 2 | 4.8 | |
| | | | 038 | | | 20 | — | — | 28.2 | — | 28.2 | 2 | 5.0 | |
| | | | 048 | | | 30 | — | — | 38.2 | 22 | 38.2 | 3 | 5.6 | |
| | | | 048 | | | 40 | — | — | 48.2 | 32 | 48.2 | 4 | 6.2 | |
| | | | 048 | | | 50 | — | — | 58.2 | 42 | 58.2 | 5 | 7.4 | |
| SE14F / SZ14F | 3 | | 028 | 19 | 25 | 15 | — | — | 27 | — | 26.3 | 2 | 9.3 | |
| | | | 038 | | | 25 | — | — | 37 | 10 | 36.3 | 3 | 9.6 | |
| | | | 048 | | | 38 | — | — | 50 | 23 | 49.3 | 4 | 12 | |
| | | | 100 | | | 50 | — | — | 62 | 35 | 61.3 | 5 | 13 | |
| SE16F / SZ16F | 3 | | 060 | 32 | 39 | 23 | — | — | 37.5 | 12 | 35.5 | 3 | 15.5 | |
| | | | 075 | | | 36 | — | — | 50.5 | 25 | 48.5 | 4 | 17.3 | |
| | | | 100 | | | 48 | — | — | 62.5 | 37 | 60.5 | 5 | 18.8 | |
| | | | 055 | | | 57 | — | — | 74.4 | 44 | — | 6 | 32 | |
| SE200F / SZ200F | 3 | | 075 | 24.3 | 35 | — | 37 | 3 | 94.4 | 64 | — | 8 | 36 | |
| | | | 100 | | | — | 50 | 3 | 120.4 | 90 | — | 10 | 38 | |
| | | | 200 | | | — | — | — | — | — | — | — | — | — |
| SE300F / SZ300F | 2 | | 075 | 48.5 | 64 | 75 | — | — | 95 | 53 | 95 | 7 | 107 | |
| | | | 100 | | | — | 48 | 4 | 120 | 78 | 120 | 10 | 119 | |
| | | | 125 | | | — | — | — | — | — | — | — | — | — |
| | | | 150 | | | — | — | — | — | — | — | — | — | — |
| | | | 200 | | | — | — | — | — | — | — | — | — | — |

Flange & Cable Securing Methods



Mounting Direction

⊙ Commonly used for both outer and inner circumferences. Except SE045F and SZ045F moving ends can not be mounted on the outer circumference.



⊙ In the case of new designs, there may be a possibility that carrier links run short. It is recommended that links are selected longer by one or two links, and are adjusted (removed) at the time of installing (removing) device.

Part Number Example

Part Number - Bending Radius - No. of Links
SE14F-3 - 048 - 20

Cables are inserted in from the outer and inner circumference, and its end comb teeth are fixed in place with cable ties.

Check out misumiusa.com for the most current pricing and lead time.