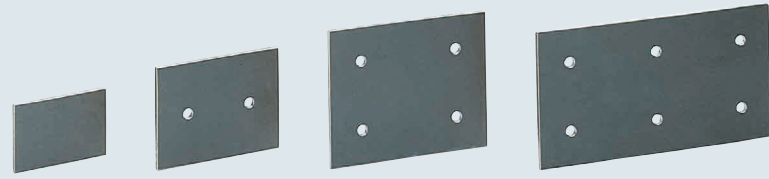


# Oil-Free Slide Plates

Configurable Multi-Layer Resin

Oil-Free Slide Plates – Configurable Multi-Layer Resin

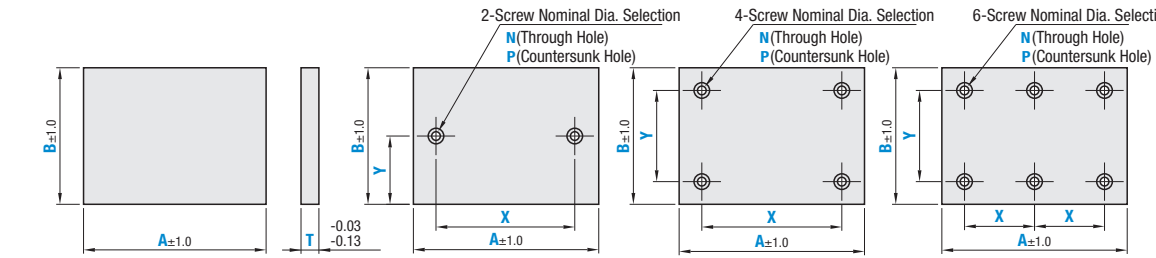


Standard  
GRFZ

With Machined Hole  
2H 2 Holes

4H 4 Holes

6H 6 Holes



Material: Multi-Layer Plastic (Filler Added Polytetrafluoroethylene Layer / Sintered Bronze Layer / Back Metal Layer)

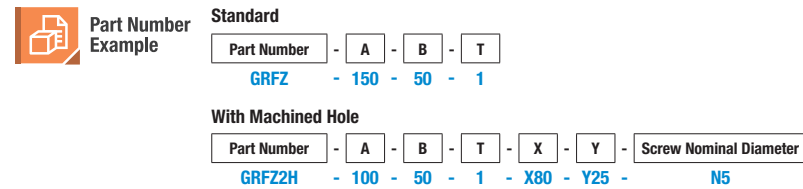
## Standard

Part Number Type	1mm Increment		T
	A	B	
GRFZ	40-500	40-80	1
	40-500	40-100	2.5

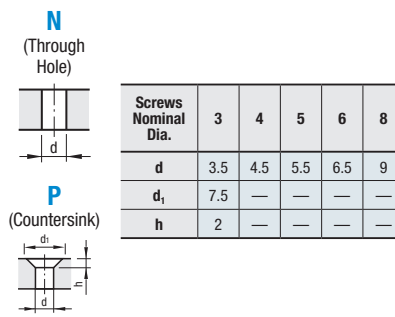
## With Machined Hole

Part Number Type	Nominal	1mm Increment		T	1mm Increment		Screw Nominal Dia.	
		A	B		X	Y	N (Through)	P (Countersunk)
GRFZ	2H	40-500	40-80	1	9-491 (2H / 4H Type)	5-95 (2H Type)	3	—
	4H	40-500	40-100	2.5	9-245 (6H Type)	9-90 (4H / 6H Type)	4	3
	6H						5	

Dimension X Specification Range: For 2H or 4H Type, it requires  $d(d_1)+5 \leq X \leq A-d(d_1)-5$ ; for 6H Type,  $d(d_1)+5 \leq X \leq A/2-d(d_1)/2-2.5$ .  
 Dimension Y Specification Range: For 2H Type, it requires  $d(d_1)/2+2.5 \leq Y \leq B-d(d_1)/2-2.5$ ; for 4H or 6H Type,  $d(d_1)+5 \leq Y \leq B-d(d_1)-5$ .  
 (d for through hole, d<sub>1</sub> for countersunk)



### Hole Machining Details

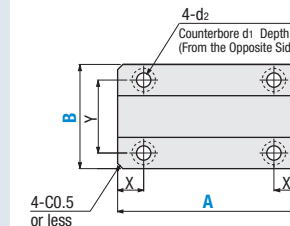


# Gibs / Gib Covers

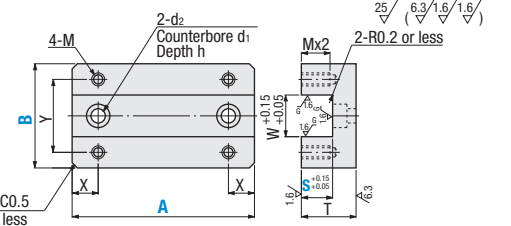
Gibs



SGRA



SGRB

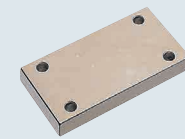


Hardened electroless nickel plated products may look slightly different in color from the image but the quality is the same.

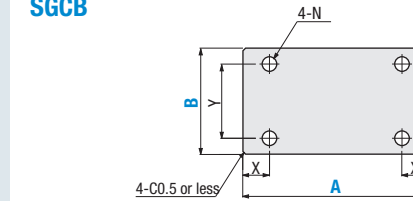
Material: 1045 Carbon Steel Equivalent  
 Surface Treatment: Hardened Electroless Nickel Plating (Plating after Grinding)  
 Hardness: HV 500~

Part Number Type	B	A	S	W	T	X	Y	d <sub>1</sub>	d <sub>2</sub>	h	M
SGRB	50	50	15 20	20	30	10	36	11	6.5	6.5	5
	60	60	15 20	30	30	10	46	11	6.5	6.5	5
	80	80	20 25	40	40	15	60	14	9	9	6
	120	120	20 25	40	40	15	60	14	9	9	6

Gib Covers



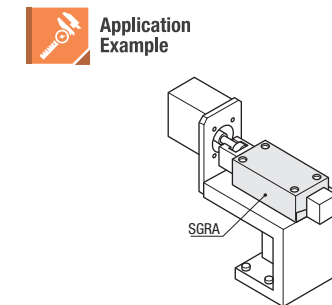
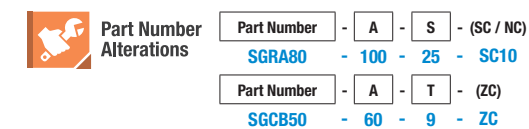
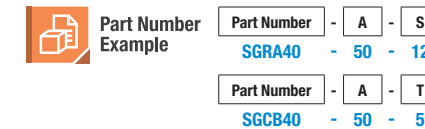
SGCB



Material: 1045 Carbon Steel Equivalent  
 Surface Treatment: Hardened Treatment Electroless Nickel Plating  
 Hardness: HV 500~

Hardened electroless nickel plated products may look slightly different in color from the image but the quality is the same.

Part Number Type	B	A	T	X	Y	N
SGCB	50	50	5	10	36	5.5
	60	60	9	10	46	
	80	80	12	15	60	6.5
	120	120	12	15	60	6.5



Alterations Code	Dimension S	Dowel Hole	Mounting Hole																																				
SC	SC = 1mm Increment Order Code: SC 6	NC	ZC																																				
Spec.	<table border="1"> <thead> <tr> <th>B</th> <th>SC</th> </tr> </thead> <tbody> <tr> <td>50</td> <td>1-21</td> </tr> <tr> <td>60</td> <td>1-28</td> </tr> </tbody> </table> <p>SC is not applicable to B=40.</p>	B	SC	50	1-21	60	1-28	<table border="1"> <thead> <tr> <th>B</th> <th>d</th> </tr> </thead> <tbody> <tr> <td>40</td> <td>5</td> </tr> <tr> <td>50</td> <td>6</td> </tr> <tr> <td>60</td> <td>6</td> </tr> <tr> <td>80</td> <td>8</td> </tr> </tbody> </table> <p>Machines 2 dowel holes. Order Code: NC</p>	B	d	40	5	50	6	60	6	80	8	<table border="1"> <thead> <tr> <th>B</th> <th>d<sub>1</sub></th> <th>d<sub>2</sub></th> <th>h</th> </tr> </thead> <tbody> <tr> <td>40</td> <td>8</td> <td>4.5</td> <td>4.5</td> </tr> <tr> <td>50</td> <td>9.5</td> <td>5.5</td> <td>5.5</td> </tr> <tr> <td>60</td> <td>9.5</td> <td>5.5</td> <td>5.5</td> </tr> <tr> <td>80</td> <td>11</td> <td>6.5</td> <td>6.5</td> </tr> </tbody> </table> <p>Changes mounting holes to counterbore holes. Order Code: ZC</p> <p>Not applicable to T=5</p>	B	d <sub>1</sub>	d <sub>2</sub>	h	40	8	4.5	4.5	50	9.5	5.5	5.5	60	9.5	5.5	5.5	80	11	6.5	6.5
B	SC																																						
50	1-21																																						
60	1-28																																						
B	d																																						
40	5																																						
50	6																																						
60	6																																						
80	8																																						
B	d <sub>1</sub>	d <sub>2</sub>	h																																				
40	8	4.5	4.5																																				
50	9.5	5.5	5.5																																				
60	9.5	5.5	5.5																																				
80	11	6.5	6.5																																				