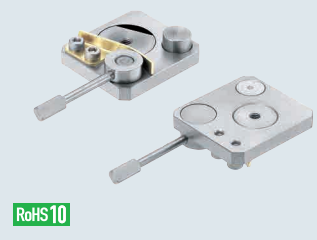


Linear Guide Clamps

Miniature, Retaining Force (Reference): 70N–105N

Linear Guide Clamps – Miniature, Retaining Force (Reference): 70N–105N

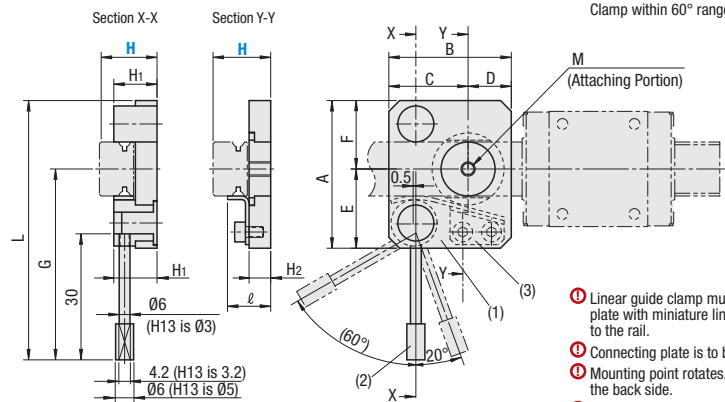


RoHS10

Type	Part	Material
SECK SECWK	(1) Main Body	304 Stainless Steel
	(2) Lever	304 Stainless Steel
	(3) Contacts	C28000 Brass

Lever Tightening Force (Reference)
40N or more (Lever End)

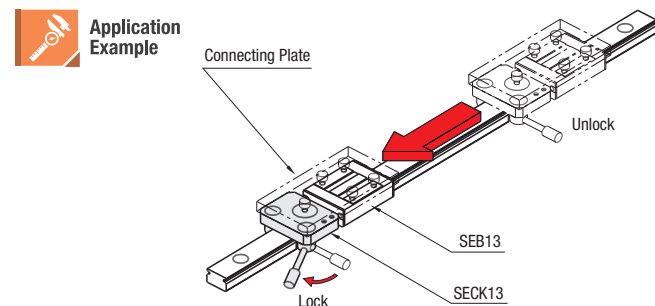
- Release at 20° to the right. Clamp within 60° range to the left.



- Linear guide clamp must be mounted to a connecting plate with miniature linear guide first, then attached to the rail.
- Connecting plate is to be supplied by user.
- Mounting point rotates. Tighten the screw by holding the back side.
- SECK Type should match with H dimension of Miniature Linear Guides.
- SECWK Type should match with H dimension of Miniature Linear Guides Wide Type.
- The lever (2) can be screwed off.

Part Number	Type	H	A	B	C	D	E	F	M	H ₁	H ₂	ℓ	L	G	Retaining Force (Reference)
SECK	13	38	34	22	12	20.5	17.5	M4	10	5	10	64	46.5	70N	
	16	41	34	22	12	22	19		12	6	12	67	48	95N	
SECWK	14	50	34	22	12	26.5	23.5	M5	11	5	11	76	52.5	75N	
	16	68	34	20.5	13.5	35.5	32.5		13	6	13	94	61.5	105N	

Part Number Example
SECK13



Characteristics of Linear Guide Clamps

Linear guide blocks can be locked at arbitrary positions by rotating lever. Convenient when simple position retaining utility is needed.

*When using the Linear Guide Clamps in inclined or vertical applications, provide external means to prevent the slider from falling.

Linear Guide Clamps

Medium / Heavy Load, Retaining Force (Reference): 1200 N

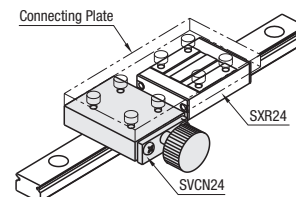
Linear Guide Clamps – Medium / Heavy Load, Retaining Force (Reference): 1200 N



RoHS10

Type	Knob Type	Clamp Type	Part	Material	Surface Treatment	Tightening Torque (Reference)
SVCN	SVCK	(1)	Main Body	1045 Carbon Steel or Equivalent	Electroless Nickel Plating	7 N·m or more (Retaining Force: 1200 N) Opening Ranges of Contacts H24...10–22 mm H36...17–36 mm H28...14–28 mm H42...21–56 mm H30...15–30 mm H42G...21–56 mm H33...16–40 mm
		(2)	Right & Left Hand Thread	4137 Alloy Steel	Black Oxide Coating	
		(3)	Contacts	1045 Carbon Steel or Equivalent	—	

Application Example
*Do not use for vertical position retaining.

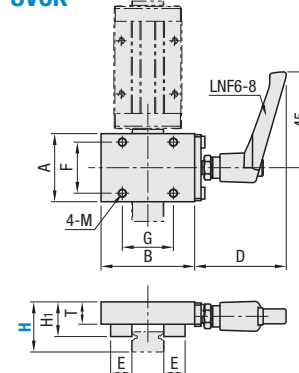
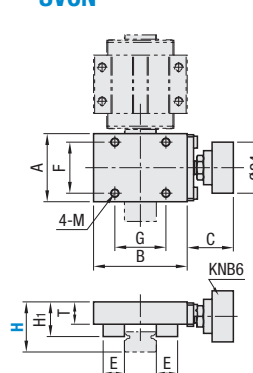
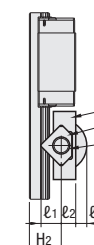


- Linear guide clamp must be mounted to a connecting plate with linear guide first, then attached to the rail.
- Connecting plate is to be supplied by user.
- Match with the H dimension of Medium / Heavy Load Linear Guides.
- For KNB6, refer to P.3216.
- For LNF6-8, refer to P.3915.

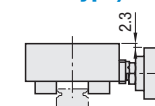
Fitting Dimensions

Knob Type
SVCN

Clamp Lever Type
SVCK



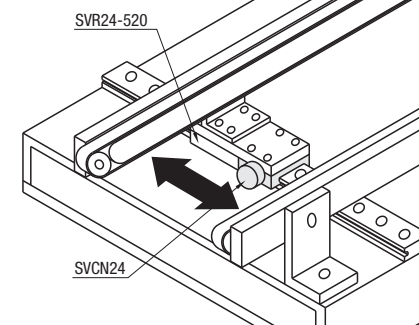
(SVCN42 Type)



Part Number	Type	H	A	B	F	G	C	D	E	T	H ₁	H ₂	ℓ ₁	ℓ ₂	ℓ ₃	M (Coarse)
SVCN SVCK	24	32	44	24	24	21.7	43	10	10.5	16.3	17.2	9.5	6.8	5.2	M4	
	28	35	50	25	25	21.7	43	10	11.5	17.3	20.2	9.5	7.8	4.2	M5	
	30	38	54	28	28	21.7	43	11	11.0	18.3	22.7	11.0	7.3	4.7	M5	
	33	38	62	26	26	21.7	43	10	14.0	19.8	22.7	9.5	10.3	1.7	M6	
	36	42	60	30	30	21.7	43	11	13.0	20.3	26.7	11.0	9.3	2.7	M6	
	42	46	80	32	32	21.7	43	11	18.0	25.3	27.7	11.0	14.3	—	M8	

Part Number Example
SVCN24

Application Example
Conveyer Pitch Change



Positioning of Robots etc.

