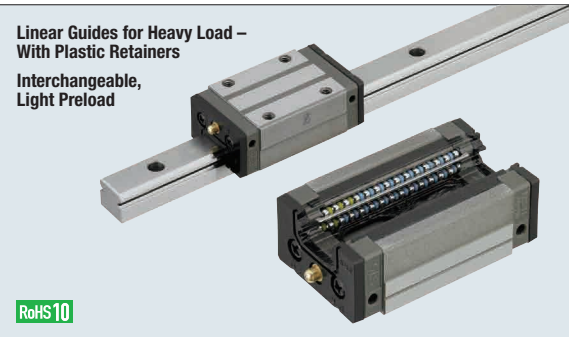


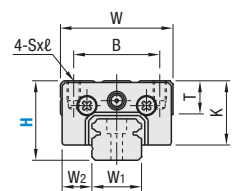
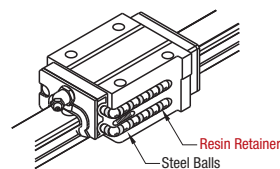
Linear Guides for Heavy Load

With Plastic Retainers / Interchangeable – Light Preload

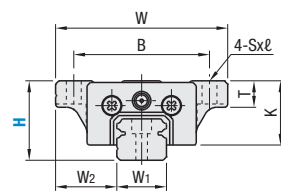


	Type		Block	Rail	L Dimensions	Material Hardness
	1 Block	2 Blocks				
Standard	SXRZ	SX2RZ	SXRZ	SRZL	Selectable	Carbon Steel 58 HRC min.
	SXRLZ	SX2RLZ		SRZLF	Configurable	
Wide Block Through Holes	SXWZ	SX2WZ	SXWB	SRZL	Selectable	
	SXWLZ	SX2WLZ		SRZLF	Configurable	
Wide Block Tapped Holes	SXWTZ	SX2WTZ	SXWTB	SRZL	Selectable	
	SXWTLZ	SX2WTLZ		SRZLF	Configurable	

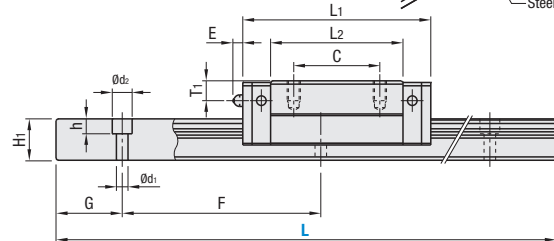
Heat Resistant Temperature: 0–50°C



Standard



Wide Block



For L Dimension Configurable Type, G dimensions differ from those shown in the table below. For details, see P.608.

Precautions for Use

- Blocks are equipped with retainers (wire) to prevent balls from derailing. For blocks P.602.
- For Interchangeable, Light Preload Type, rails and blocks can be interchanged.
- Straight grooves are provided on datum planes. Be sure to match the datum lines when using.
- Rails cannot be connected end to end.
- Running parallelism is the value measured after the rail is mounted (it is not the value measured before the rails are fastened with screws).

Others

- Filled with Lithium soap based grease (Alvania Grease S2 by Showa Shell Sekiyu K.K.).
- Grease Fittings: Straight Type for H24 and Angled Type for H28, H33 and H42.
- Grease Fitting is screw-in type, and thus, can be repositioned.
- For Operating Life Calculation P.604.

	Part Number		H	L	Block Dimensions										Guide Rail Dimensions						
	Type				W	L ₁	B	C	S x ℓ	L ₂	K	T	Grease Fittings			H ₁	W ₁	W ₂	Counterbored Holes d ₁ x d ₂ x h	F	G
	1 Block	2 Blocks											Mounting Holes	E	T ₁						
Standard Blocks SXRZ SXRLZ SXRZ SRZL SRZLF	SXRZ	SX2RZ	24	100–1480 (160)	34	56.8	26	26	M4 x 6	40	19.4	10	∅3	3	6	12.5	15	9.5	3.5 x 6 x 4.5	60	20
	SXRLZ	SX2RLZ	28	160–1960 (220)	42	65.2	32	32	M5 x 7	48	22	12	M6 x P0.75	11	5.5	15.5	20	11	6 x 9.5 x 8.5	60	20
			33	200–1960 (280)	48	81.6	35	35	M6 x 9	60	26	12	M6 x P0.75	11	7	18	23	12.5	7 x 11 x 9	60	20
			42	200–1960 (280)	60	96.4	40	40	M8 x 12	71	33	13	M6 x P0.75	11	8	23	28	16	7 x 11 x 9	80	20
Wide Block Blocks SXWZ SXWLZ SXWTZ SXWTLZ SXWB SXWTB	SXWZ	SX2WZ	24	100–1480 (160)	52	56.8	41	26	4.5 (M5)	40	19.4	8	∅3	3	6	12.5	15	18.5	3.5 x 6 x 4.5	60	20
	SXWLZ	SX2WLZ	28	160–1960 (220)	59	65.2	49	32	5.5 (M6)	48	22	10	M6 x P0.75	11	5.5	15.5	20	19.5	6 x 9.5 x 8.5	60	20
	SXWTZ	SX2WTZ	33	200–1960 (280)	73	81.6	60	35	7 (M8)	60	26	11	M6 x P0.75	11	7	18	23	25	7 x 11 x 9	60	20
	SXWTLZ	SX2WTLZ	42	200–1960 (280)	90	96.4	72	40	9 (M10)	71	33	11	M6 x P0.75	11	8	23	28	31	7 x 11 x 9	80	20

L Dimension: Dimensions in () are for the minimum rail length of the 2-Block Type.

S x ℓ Dimensions: Dimensions in () are for Wide Block Type Tapped Hole.

Part Number Example: SXRZ28 - L - 1840

Linear Guides for Heavy Load

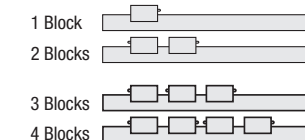
With Plastic Retainers / Interchangeable – Light Preload, *continued*

Part Number Alterations: SXRZ28 - L - RLC / LLC

Alterations	Code	Specifications									
Rail End Cut LLC	Left End Cut LLC	Cuts rail ends. Ordering Code: LLC									
	Right End Cut RLC										
		<table border="1"> <thead> <tr> <th>H</th> <th>L Cut</th> <th>N</th> </tr> </thead> <tbody> <tr> <td>24</td> <td rowspan="4">10</td> <td rowspan="4">10</td> </tr> <tr> <td>28</td> </tr> <tr> <td>33</td> </tr> <tr> <td>42</td> </tr> </tbody> </table>	H	L Cut	N	24	10	10	28	33	42
H	L Cut	N									
24	10	10									
28											
33											
42											
		<ul style="list-style-type: none"> Applicable to Selectable Type only. Overall length will be shorter by cutting. 									
3-Block Specifications	B3	Add 2 Blocks to 1-block product to ship as 3-block separate item. Selection Example: SXRZ24-400-B3									
4-Block Specifications	B4	Add 3 Blocks to 1-block product to ship as 4-block separate item. Selection Example: SXRZ24-400-B4									

Position of Grease Fitting

(Reference plane on the front side)



Selectable Shortest Rail Length

H	B3 (3-Block)	B4 (4-Block)
24	340	400
28	400	460
33	400	520
42	440	520

kgf=Nx0.101972

H	Basic Load Rating		Allowable Static Moment			Mass		
	C (Dynamic) kN	Co (Static) kN	MA N·m	Mb N·m	Mc N·m	Block kg		Guide Rails kg/m
						Standard	Wide	
24	7.9	15.6	74	62	78	0.2	0.26	1.4
28	11.1	21.8	124	104	149	0.28	0.35	2.3
33	17.9	33.5	242	203	266	0.51	0.66	3.1
42	27.3	50.5	415	350	480	0.85	1.20	4.8



Options for Linear Guide

Linear Guide Clamps	Rail Height Adjusting Blocks
<p>P.680–681</p>	<p>P.682–684</p>
Block Derailment Prevention Parts / Cover Caps	Block / Rail Fixing Parts
<p>P.685</p>	<p>P.685</p>
<p>P.685</p>	<p>P.686</p>
<p>P.685</p>	<p>P.687</p>

Preload & Accuracy Standards

Interchangeable, Light Preload Type

Radial Clearance (μm)	
H24, 28	-4-0
H33, 42	-5-0

Dimension Accuracy (μm)	Interchangeable
Height H Tolerance	±20
Pair Variation of Height H	15
Width W ₂ Tolerance	±30
Pair Variation of Width W ₂	25
Running Parallelism of Plane C against Plane A	Refer to P.602
Running Parallelism of Plane D against Plane B	

