

Shaft Collars

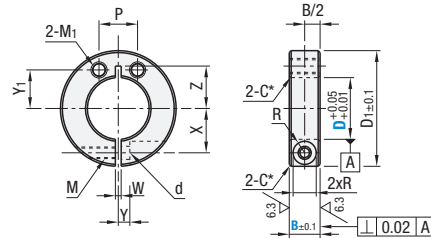
Compact Type with Side Mount Holes (For Space Saving) / Slit / Split Type

Features: Smaller by up to 40% in width (B dimension) and 17% in O.D. (d₁ dimension) than the Side Mounting Hole Standard Type (P.357).

Shaft Collars – Compact Type Side Mounting / Slit Type



Type	Material	Surface Treatment	Accessories
SCJSJ	1045 Carbon Steel or Equivalent	Black Oxide Coating	Hex Socket Head Cap Screw 1 pc. (4137 Alloy Steel or Equivalent)
PSCJSJ	1045 Carbon Steel or Equivalent	Electroless Nickel Plating	Hex Socket Head Cap Screw 1 pc. (304 Stainless Steel or Equivalent)
SSCJSJ	304 Stainless Steel or Equivalent	—	Hex Socket Head Cap Screw 1 pc. (304 Stainless Steel or Equivalent)



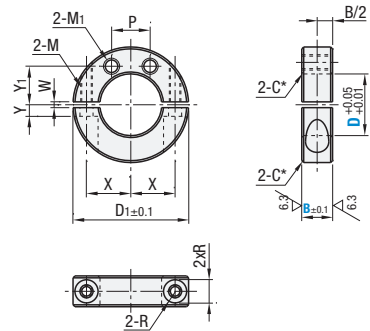
*D8-D25: C0.5
D30: C1

25/(6.3/)

Shaft Collars – Compact Type Side Mounting / Split Type



Type	Material	Surface Treatment	Accessories
SCJPJ	1045 Carbon Steel or Equivalent	Black Oxide Coating	Hex Socket Head Cap Screw 2 pcs. (4137 Alloy Steel or Equivalent)
PSCJPJ	1045 Carbon Steel or Equivalent	Electroless Nickel Plating	Hex Socket Head Cap Screw 2 pcs. (304 Stainless Steel or Equivalent)
SSCJPJ	304 Stainless Steel or Equivalent	—	Hex Socket Head Cap Screw 2 pcs. (304 Stainless Steel or Equivalent)



*D8-D25: C0.5
D30: C1

25/(6.3/)

Part Number	Type	D	B	D ₁	M (Coarse)	d	R	W	X	Y	Z	M ₁ (Coarse)	Y ₁	P	1045 Carbon Steel or Equivalent		304 Stainless Steel or Equivalent	
															Black Oxide Coating	Electroless Nickel Plating	—	
															SCJSJ	SCJPJ	PSCJSJ	PSCJPJ
Slit Type	8	6	22	M2.6	2.9	2.45	1.5	7	7	7	7	7	7	8	•	•	•	•
SCJSJ	10	6	25	M2.6	2.9	2.45	1.5	8	8	8	8	8	8	8	•	•	•	•
PSCJSJ	12	6	25	M2.6	2.9	2.45	1.5	9	9	9	9	9	9	9	•	•	•	•
SSCJSJ	15	6	30	M3	3.4	3	1.5	11	11	11	11	11	11	11	•	•	•	•
Split Type	16	8	30	M3	3.4	3	1.5	11.5	11.5	11.5	11.5	11.5	11.5	11.5	•	•	•	•
SCJPJ	20	8	35	M3	3.4	3	1.5	13	13	13	13	13	13	13	•	•	•	•
PSCJPJ	25	10	42	M4	4.5	3.75	1.5	16.5	16.5	16.5	16.5	16.5	16.5	16.5	•	•	•	•
SSCJPJ	30	12	50	M5	5.5	4.5	1.5	20	20	20	20	20	20	20	•	•	•	•

① The halves must remain in the same orientation as shipped when in use.
② SSCJSJ15, SCJPJ8, SSCJPJ15 and SSCJPJ16 has been discontinued.

Size Comparison Table

D	Size Differences		Compact		Standard (P.357)	
	B (Thickness)	D ₁ (Outer Dia.)	B (Thickness)	D ₁ (Outer Dia.)	B (Thickness)	D ₁ (Outer Dia.)
8	-4	-3	6	22	10	25
10	-4	-5	6	25	10	30
12	-4	-5	6	25	10	30
13	-2	-2	8	28	10	30
15	-2	-4	8	30	10	34
16	-2	-5	8	30	10	35
20	-2	-5	8	35	10	40
25	-2	-3	10	42	12	45
30	-3	-5	12	50	15	55

Part Number Example	Part Number
	SCJSJ8
	SCJPJ15

Shaft Collars

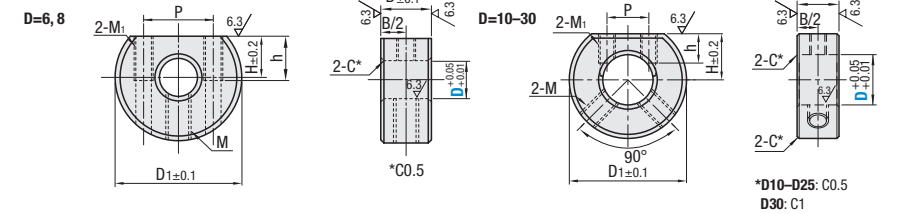
D Cut Standard / Set Screw Flat / Slit / Split Type

Features: Mounting holes on side enable easy installation of sensor brackets. Aluminum is recommended for weight saving.

Shaft Collars – D Cut Standard / Set Screw Flat Type



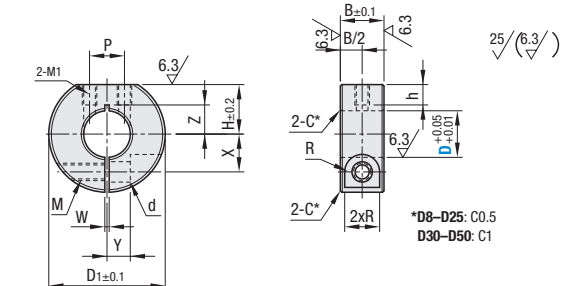
Type	Material	Surface Treatment	Accessories
SDSN	1045 Carbon Steel or Equivalent	Black Oxide Coating	Set Screw 2 pcs. (304 Stainless Steel or Equivalent)
PSDSN	1045 Carbon Steel or Equivalent	Electroless Nickel Plating	Set Screw 2 pcs. (304 Stainless Steel or Equivalent)
SSDSN	304 Stainless Steel or Equivalent	—	Set Screw 2 pcs. (304 Stainless Steel or Equivalent)



Shaft Collars – D Cut Standard / Slit Type



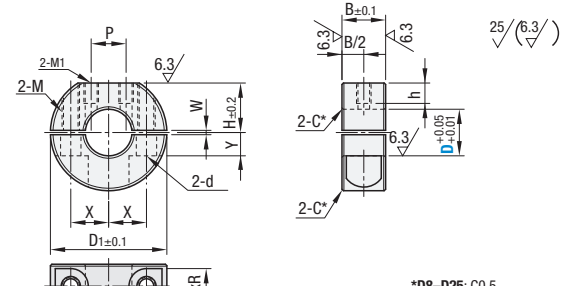
Type	Material	Surface Treatment	Accessories
SDS	1045 Carbon Steel or Equivalent	Black Oxide Coating	Hex Socket Head Cap Screw 2 pcs. (4137 Alloy Steel or Equivalent)
PSDS	1045 Carbon Steel or Equivalent	Electroless Nickel Plating	Hex Socket Head Cap Screw 2 pcs. (304 Stainless Steel or Equivalent)
SSCDS	304 Stainless Steel or Equivalent	—	Hex Socket Head Cap Screw 2 pcs. (304 Stainless Steel or Equivalent)
SDSA	2000 Series Aluminum Alloy	—	Hex Socket Head Cap Screw 2 pcs. (304 Stainless Steel or Equivalent)



Shaft Collars – D Cut Standard / Split Type



Type	Material	Surface Treatment	Accessories
SDN	1045 Carbon Steel or Equivalent	Black Oxide Coating	Hex Socket Head Cap Screw 1 pc. (4137 Alloy Steel or Equivalent)
PSDN	1045 Carbon Steel or Equivalent	Electroless Nickel Plating	Hex Socket Head Cap Screw 1 pc. (304 Stainless Steel or Equivalent)
SSCDN	304 Stainless Steel or Equivalent	—	Hex Socket Head Cap Screw 1 pc. (304 Stainless Steel or Equivalent)
SDNA	2000 Series Aluminum Alloy	—	Hex Socket Head Cap Screw 1 pc. (304 Stainless Steel or Equivalent)



RoHS 10

Part Number	Type	D	D ₁	B	H	M ₁	P	h	Set Screw M x Length	Compliance with Standard		
										1045 Carbon Steel or Equivalent		304 Stainless Steel or Equivalent
										Black Oxide Coating	Electroless Nickel Plating	—
Set Screw Type	8	6	20	8	6.5	M3	11	7	M4 x 4	•	•	•
SDSN	10	6	22	8	7	M3	13	7	M4 x 4	•	•	•
PSDSN	12	6	25	8	10	M3	8	7	M4 x 4	•	•	•
SSDSN	15	6	30	8	11	M3	8	7	M4 x 4	•	•	•
	20	8	35	10	12.5	M4	10	5	M5 x 6	•	•	•
	25	8	42	10	15	M4	10	5	M5 x 6	•	•	•
	30	12	50	12	18	M5	12	6	M6 x 6	•	•	•
					20	M5	12	5	M6 x 6	•	•	•

① M1 effective thread depth is 7mm (pilot hole through) for D6-12.

Part Number	Type	D	D ₁	B	M (Coarse)	d	R	H	M ₁	P	h	W	X	Y	Compliance with Standard			
															1045 Carbon Steel or Equivalent		304 Stainless Steel or Equivalent	2000 Series Aluminum Alloy
															Black Oxide Coating	Electroless Nickel Plating	—	—
Standard, Clamp	8	30	22	6	M2.6	2.9	2.45	1.5	7	7	7	7	7	7	•	•	•	•
SDS	10	30	25	6	M2.6	2.9	2.45	1.5	8	8	8	8	8	8	•	•	•	•
PSDS	12	30	25	6	M2.6	2.9	2.45	1.5	9	9	9	9	9	9	•	•	•	•
SSCDS	*13	30	30	6	M3	3.4	3	1.5	11	11	11	11	11	11	•	•	•	•
SDSA	15	30	30	6	M3	3.4	3	1.5	11.5	11.5	11.5	11.5	11.5	11.5	•	•	•	•
SDN	*16	40	30	8	M3	3.4	3	1.5	13	13	13	13	13	13	•	•	•	•
PSDN	20	45	35	8	M3	3.4	3	1.5	16.5	16.5	16.5	16.5	16.5	16.5	•	•	•	•
SSCDN	25	50	42	10	M4	4.5	3.75	1.5	20	20	20	20	20	20	•	•	•	•
SDNA	*30	55	50	12	M5	5.5	4.5	1.5	20	20	20	20	20	20	•	•	•	•
	*35	60	55	12	M5	5.5	4.5	1.5	21	21	21	21	21	21	•	•	•	•
	*40	70	60	18	M8	9	7	3.0	26	26	26	26	26	26	•	•	•	•
	*50	85	70	22	M10	11	9	3.7	37	37	37	37	37	37	•	•	•	•

① M₁ effective thread depth is 7 mm (pilot hole through) for D8-15 of 1018 Carbon Steel or Equivalent (1045 Carbon Steel or Equivalent). For others, tapped holes are through.
② M₁ effective thread depth is 7 mm (pilot hole through) for D8-12 and D15-18 of 304 Stainless Steel or Equivalent. For others, tapped holes are through.
③ The halves must remain in the same orientation as shipped when in use.