

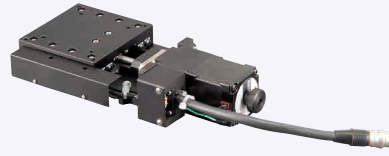
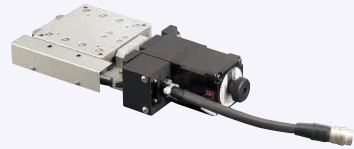


For CAD data, see the MISUMI website.

Features: Low Profile Type X-Axis Stages with 21~35mm of table height.

X-Axis Clear Anodize

X-Axis Black Anodize

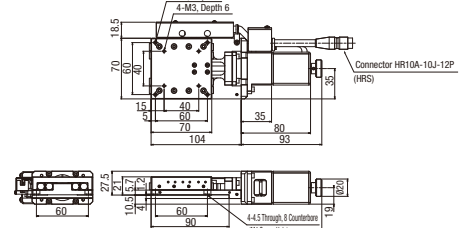
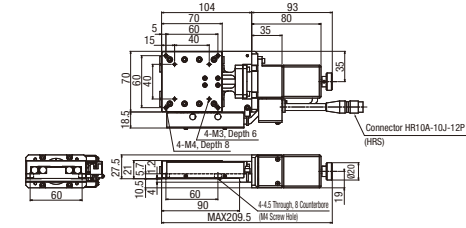


- M** Material: Aluminum Alloy
- S** Surface Treatment: Clear Anodize (XMPTG725)
Black Anodize (XMPTG1040)
- A** Accessory XMPTG 725, 830: SCB4-8 (4 pcs.)
XMPTG 1040, 1250: SCB6-10 (4 pcs.)



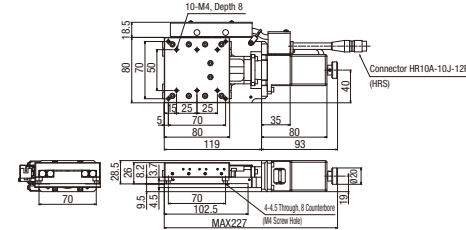
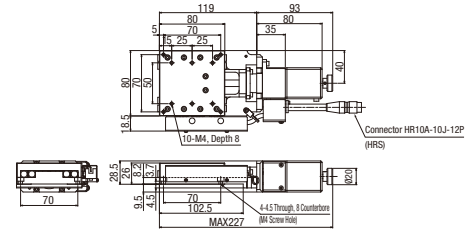
XMPTG725-L

XMPTG725-R



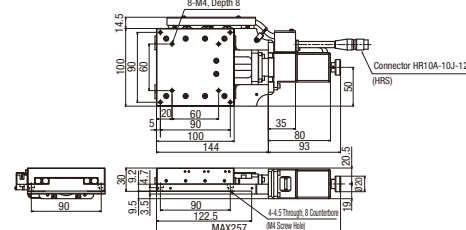
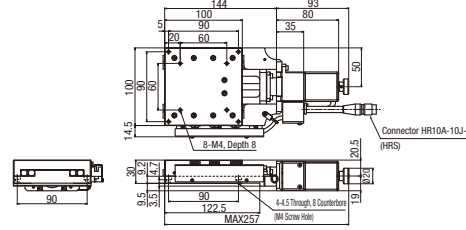
XMPTG830-L

XMPTG830-R



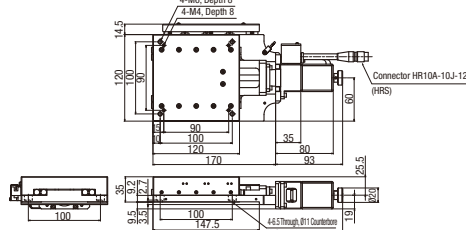
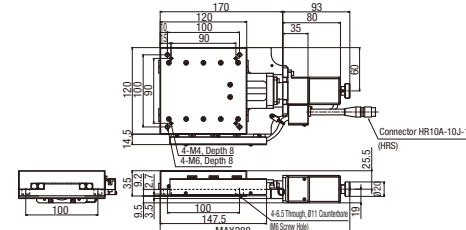
XMPTG1040-L

XMPTG1040-R



XMPTG1250-L

XMPTG1250-R



See the CAD data for detailed dimensions.

Part Number	Type	No.	Sensor	Cable	Mechanical Standards			Accuracy Standards *1								
					Stage Surface (mm)	Travel Distance (mm)	Weight (kg)	Unidirectional Positioning Accuracy	Moment Rigidity (°/N·cm)			Pitching	Yawing			
XMPTG		725	L (Standard)	N (Cable not included separately sold)	70X70	25	1.0	5μm	Pitching	Yawing	Rolling	20''	15''			
		830			80X80	30	1.2							0.09	0.07	0.07
		1040			100X100	40	1.6							0.05	0.04	0.03
		1250			120X120	50	2.2							0.04	0.04	0.02

*1. The above accuracy standards of Unidirectional Positioning Accuracy and Moment Rigidity are for a single axis.



Part Number	-	Sensor	-	Cable
XMPTG725	-	L	-	N
XMPTG1040	-	R	-	N

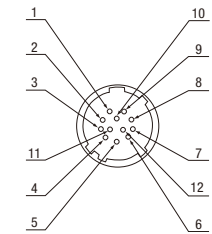


Configure Online

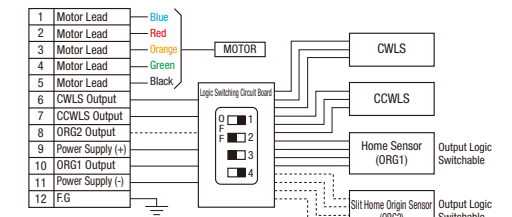
Common Specifications

No.	725	830	1040	1250
Feed Screw	Ball Screw Ø6, Lead 1		Ball Screw Ø8, Lead 1	
Guide	Cross Roller Guide			
Resolution	Full			
	Half			
Max. Speed	10mm/sec			
	Positioning repeatability ±0.3μm			
Load Capacity	98N	147N	196N	245N
Lost Motion	1μm or less			
Backlash	0.5μm or less			
Straightness	1μm or less			
Parallelism	10μm or less		15μm or less	
Motion Parallelism	10μm or less		15μm or less	

Connector Pin Configuration



Connecting Diagram



* For the standard cable, any connection with dotted lines does not work.

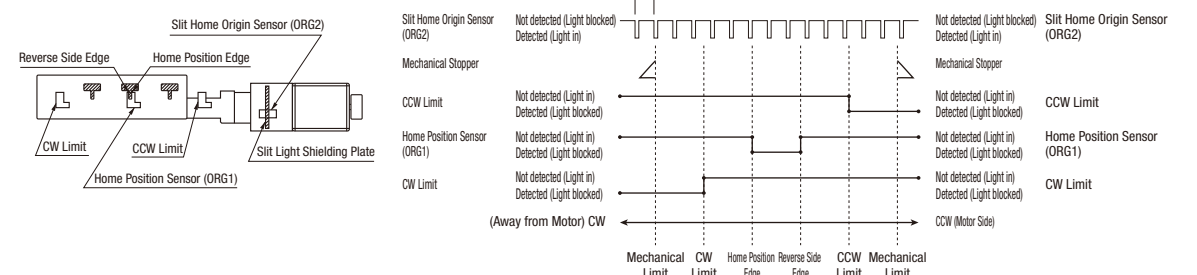
Electrical Specifications

No.	725	830	1040	1250
Motor	Type	5-Phase Stepping Motor 0.75A/Phase (Oriental Motor Co., Ltd.)		
	Part Number	C7214-9015-1 (□38mm)		
Connector	Applicable Receptacle Connector	HR10A-10P-12S (73) (Hirose Electric Co., LTD.)		
	Limit Sensor	Provided		
	Slit Home Origin Sensor	Provided		
	Home Sensor	Provided		
Sensor	Part Number	Photomicrosensor: PM-L25 (Panasonic Industrial Devices SUNX Co., Ltd.)		
	Power Supply Voltage	DC5~24V ±10%		
	Current Consumption	60mA or less (15mA per Sensor)		
	Control Output	NPN Open Collector Output DC30V or less, 50mA or less Residual Voltage 2V or less (when load current is 50mA) Residual Voltage 1V or less (when load current is 16mA)		
Output Logic	Detecting (Dark): Output Transistor OFF (Non-Conducting)			

On the XMPTG Series, conversion for output logic is available for the Home Sensor.

Sensors with Part Number PM-□24 are to be discontinued and replaced by next-generation products with Part Number PM-□25 from April 2017.

Timing Chart



(Unit: mm)	CW Direction	Reference Position	Mechanical Limit	CW Limit	Home	Other Signal Edge	CCW Limit	Mechanical Limit	CCW Direction	
		XMPTG725	Homing	15	13.3	0	2	13.3	15	
		XMPTG830	Homing	17.5	15.8	0	2	15.8	17.5	
		XMPTG1040	Homing	22.5	20.8	0	2	20.8	22.5	
		XMPTG1250	Homing	27.5	25.8	0	2	25.8	27.5	
		Common		Slit Home Position (Detecting) Interval S=1						

Homing Routine Above: When the standard cable and the MSCLT102 Series Controller are used and when the Homing Routine Type 4 is executed.

The coordinates shown are design values. There may be approx. ±0.5mm misalignment on the physical dimensions.

For details about Homing, see P. 1735-97