



Locating Pins for Fixtures

Standard Grade, Shouldered



Locating Pins for Fixtures

Tip Shape Selectable, Standard Grade, Shouldered



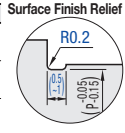
Features: For Standard Grade, P Dim. Tolerance is ± 0.05 (for Precision Grade, -0.01 or -0.02), concentricity is 0.03 or 0.05 (for Precision Grade, 0.01 or 0.02). Polishing Relief Groove is smaller than the conventional products to avoid a workpiece getting stuck.

Threaded

| Type | M | Material | H | Hardness | S | Surface Treatment |
|--------|---------|--------------------|---|---|---|---------------------|
| ELANA | Round | 4137 Alloy Steel | | Hardened 35~40HRC | | Hard Chrome Plating |
| ELAND | Diamond | Alloy Steel | | 35~40HRC | | |
| TELANA | Round | SCM415 Alloy Steel | | Carburized Treated Hardness: 55HRC-(Depth: 0.7 - 0.8) Anti-carburizing on Threads | | Dicoat® Treated |
| TELAND | Diamond | Steel (JIS) | | | | |

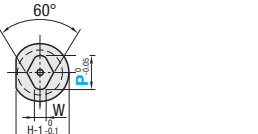
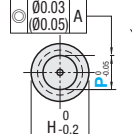
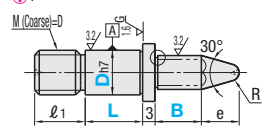
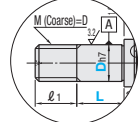
Reference: $\sin 15^\circ = 0.259$ $\tan 15^\circ = 0.267$

| Type | M | Material | H | Hardness | S | Surface Treatment |
|--------|---------|--------------------------|---|----------------------------|---|---------------------|
| R-LANA | Round | 4137 Alloy Steel | | 35~40HRC (Surface 750HV ~) | | Hard Chrome Plating |
| R-LAND | Diamond | 4137 Alloy Steel | | 35~40HRC | | |
| D-LANA | Round | D2 Tool Steel Equivalent | | 55HRC ~ (Surface 3000HV) | | Dicoat® Treated |
| D-LAND | Diamond | D2 Tool Steel Equivalent | | 55HRC ~ (Surface 3000HV) | | |
| H-LANA | Round | D2 Tool Steel | | 55HRC ~ (Surface 3000HV) | | TiCN Treatment |
| H-LAND | Diamond | D2 Tool Steel | | 55HRC ~ (Surface 3000HV) | | |



① Dicoat® Treated / TiCN Thread Shape

① Dicoat® Treated / TiCN items will have the () precision and Thread Shape will be ①.



$e = P/2 \tan 15^\circ + R - (R/\sin 15^\circ)$

① Dicoat® Treated / TiCN Treated items do not come with a center hole.

| Part Number | Type | Dh7 | P | B | L Selection | | | | | | Unit Price | | | | | | | | | | |
|-------------|------|-----|--------|-----------|-------------|----|----|----|----|-------|------------|--------|--------|--------|--------|--------|--------|--------|--------|--|--|
| | | | | | L | l1 | H | R | W | ELANA | ELAND | TELANA | TELAND | R-LANA | R-LAND | D-LANA | D-LAND | H-LANA | H-LAND | | |
| | | 6 | 0.012 | 3.0-7.0 | | 5 | 8 | 10 | | 6 | 9 | 1 | 1-2 | | | | | | | | |
| | | 8 | 0 | 3.0-9.0 | | 5 | 8 | 10 | 12 | 15 | 10 | 11 | 1.5 | 1-2 | | | | | | | |
| | | 10 | 0 | 4.5-12.0 | | 5 | 8 | 10 | 12 | 15 | 12 | 13 | 2 | 1-3 | | | | | | | |
| | | 10T | ±0.015 | 4.5-12.0 | | 5 | 8 | 10 | 12 | 15 | 18 | 13 | 2 | 1-3 | | | | | | | |
| | | 12 | 0 | 9.0-13.0 | | 8 | 10 | 12 | 15 | 18 | 15 | 3 | 4 | | | | | | | | |
| | | 16 | ±0.018 | 13.0-16.0 | | 10 | 12 | 15 | 18 | 20 | 18 | 19 | 4 | 5 | | | | | | | |

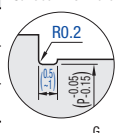
① W Dimension D6, D8: W=2 when P>5.0, D10, 10T: W=1 when P<5.0, W=2 when 5.0≤P≤7.0, W=3 when P>7.0 ① L dimension in () is not applicable to Diamond Shape, Dicoat® and TiCN treatment.
① B Dimension 5 mm ~ will be selected for Dicoat® Treated / TiCN Treated items.

Set Screw

| Type | M | Material | H | Hardness | S | Surface Treatment |
|--------|---------|--------------------|---|---|---|---------------------|
| ELATA | Round | 4137 Alloy Steel | | Hardened 35~40HRC | | Hard Chrome Plating |
| ELATD | Diamond | Alloy Steel | | 35~40HRC | | |
| TELATA | Round | SCM415 Alloy Steel | | Carburized 55HRC-(Depth: 0.7 - 0.8) Anti-carburizing on Threads | | Dicoat® Treated |
| TELATD | Diamond | Steel (JIS) | | | | |

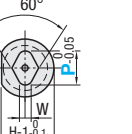
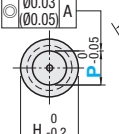
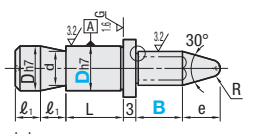
Reference: $\sin 15^\circ = 0.259$ $\tan 15^\circ = 0.267$

| Type | M | Material | H | Hardness | S | Surface Treatment |
|--------|---------|--------------------------|---|----------------------------|---|---------------------|
| R-LATA | Round | 4137 Alloy Steel | | 35~40HRC (Surface 750HV ~) | | Hard Chrome Plating |
| R-LATD | Diamond | 4137 Alloy Steel | | 35~40HRC | | |
| D-LATA | Round | D2 Tool Steel Equivalent | | 55HRC ~ (Surface 3000HV) | | Dicoat® Treated |
| D-LATD | Diamond | D2 Tool Steel Equivalent | | 55HRC ~ (Surface 3000HV) | | |
| H-LATA | Round | D2 Tool Steel | | 55HRC ~ (Surface 3000HV) | | TiCN Treatment |
| H-LATD | Diamond | D2 Tool Steel | | 55HRC ~ (Surface 3000HV) | | |



① Dicoat® Treated / TiCN Set Screw will have the () precision.

① Dicoat® Treated / TiCN Treated items will have the () precision.



$e = P/2 \tan 15^\circ + R - (R/\sin 15^\circ)$

① Dicoat® Treated / TiCN Treated items do not come with a center hole.

| Part Number | Type | Dh7 | P | B | L Selection | | | | | | Unit Price | | | | | | | | | | |
|-------------|------|-----|--------|-----------|-------------|----|----|----|----|-----|------------|-------|--------|--------|--------|--------|--------|--------|--------|--------|--|
| | | | | | L | l1 | H | d | R | W | ELATA | ELATD | TELATA | TELATD | R-LATA | R-LATD | D-LATA | D-LATD | H-LATA | H-LATD | |
| | | 6 | 0.012 | 3.0-7.0 | | 8 | 8 | 9 | 4 | 1 | M5 | 1-2 | | | | | | | | | |
| | | 8 | 0 | 3.0-9.0 | | 8 | 8 | 11 | 5 | 1.5 | M5 | 1-2 | | | | | | | | | |
| | | 10 | 0 | 4.5-12.0 | | 10 | 8 | 13 | 7 | 2 | M6 | 1-3 | | | | | | | | | |
| | | 10T | ±0.015 | 4.5-12.0 | | 5 | 8 | 13 | 7 | 2 | M6 | 1-3 | | | | | | | | | |
| | | 12 | 0 | 9.0-13.0 | | 12 | 10 | 15 | 9 | 3 | M8 | 4 | | | | | | | | | |
| | | 16 | ±0.018 | 13.0-16.0 | | 12 | 10 | 19 | 13 | 4 | M8 | 5 | | | | | | | | | |

① W Dimension D6, D8: W=2 when P>5.0, D10, 10T: W=1 when P<5.0, W=2 when 5.0≤P≤7.0, W=3 when P>7.0 ① B Dimension 5 mm ~ will be selected for Dicoat® Treated / TiCN Treated items.

Ordering Example

| | | | | | |
|-------------|------|------|-----|-----|---|
| Part Number | Type | D | P | B | L |
| ELANA | 6 | P6.0 | B15 | L10 | |
| ELATA | 10 | P8.8 | B10 | | |

Price [Configure Online](#)

Days to Ship

[Configure Online](#)

Alterations

| | | | | | | |
|-------------|------|------|-----|----|----|------------|
| Part Number | Type | D | P | B | L | Alteration |
| ELANA | 6 | P6.8 | B14 | L5 | SC | |

| Alterations | Grooves for Wear Sign | Flat Position | Flat Machining | Wrench Flats | Thread Dia. | Thread Length | Upper Relief Radius Change |
|-------------|--|--|---|---|--|--|---|
| MK | Machine 4 grooves on B Dimension. The wear and tear of the grooves indicate the degree of wear. ① Applicable to Hardened, Carburized and Round Shape Products only ① When used together with RTC, the groove starts from the area of R value +1 mm. Groove Depth: 0.2mm (±0.05mm) Groove Shape: V Groove (90°) | KC Changes the flat position to 90° from the standard position 0°. ① Applicable to Diamond Shape Type only | KD Machining on one side. ① H: P-2 ① Applicable to Round Shape Type only | SC Adds wrench flats. ① H: 9 11 13 15 19 ① H: 7 8 11 13 17 | MC8 Changes the thread diameter. ① D/3:M-D Mmin3 ① Applicable to Threaded only. | FC15 Changes the thread length. FC=1mm Increment. D6-10 : M:FC=Mx2.5 D20 : M:FC=Mx2 ① Applicable to Threaded only. ① Not applicable to Dicoat® and TiCN treatment. | RTC1 Changes the relief to the following radius R. Selection) R1 R2 R3 ① RTC=(H-P)/2 ① Applicable when B=5 |

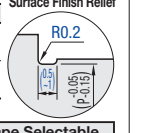
Features: For Standard Grade, P Dim. Tolerance is ± 0.05 (for Precision Grade, -0.01 or -0.02), concentricity is 0.03 or 0.05 (for Precision Grade, 0.01 or 0.02). Tip shape is selectable. Polishing Relief Groove is smaller than the conventional products to avoid a workpiece getting stuck.

Threaded

| Type | M | Material | H | Hardness | S | Surface Treatment |
|---------|---------|--------------------|---|---|---|---------------------|
| SELANA | Round | 4137 Alloy Steel | | Hardened 35~40HRC | | Hard Chrome Plating |
| SELAND | Diamond | Alloy Steel | | 35~40HRC | | |
| TSELANA | Round | SCM415 Alloy Steel | | Carburized 55HRC-(Depth: 0.7 - 0.8) Anti-carburizing on Threads | | Dicoat® Treated |
| TSELAND | Diamond | Steel (JIS) | | | | |

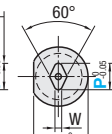
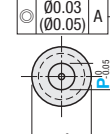
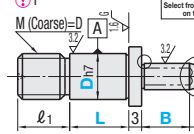
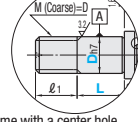
Reference: $\sin 15^\circ = 0.259$ $\sin 30^\circ = 0.5$ $\sin 45^\circ = 0.707$ $\sin 60^\circ = 0.866$ $\tan 15^\circ = 0.267$ $\tan 30^\circ = 0.577$ $\tan 45^\circ = 1$ $\tan 60^\circ = 1.732$

| Type | M | Material | H | Hardness | S | Surface Treatment |
|---------|---------|--------------------------|---|----------------------------|---|---------------------|
| R-SLANA | Round | 4137 Alloy Steel or En8 | | 35~40HRC (Surface 750HV ~) | | Hard Chrome Plating |
| R-SLAND | Diamond | 4137 Alloy Steel | | 35~40HRC | | |
| D-SLANA | Round | D2 Tool Steel Equivalent | | 55HRC ~ (Surface 3000HV) | | Dicoat® Treated |
| D-SLAND | Diamond | D2 Tool Steel Equivalent | | 55HRC ~ (Surface 3000HV) | | |



① Dicoat® Treated Thread Shape

① Dicoat® Treated items will have the () precision and Thread Shape will be ①.



$e = P/2 \tan 15^\circ + R - (R/\sin 15^\circ)$

① Dicoat® Treated / TiCN Treated items do not come with a center hole.

| Part Number | Type | Tip Shape | Dh7 | P | B | L Selection | | | | | | Unit Price | | | | | | | | | |
|-------------|------|-----------|-----|--------|-----------|-------------|----|----|----|----|--------|------------|---------|---------|---------|---------|---------|---------|--|--|--|
| | | | | | | L | l1 | H | R | W | SELANA | SELAND | TSELANA | TSELAND | R-SLANA | R-SLAND | D-SLANA | D-SLAND | | | |
| | | A | 6 | 0.012 | 3.0-7.0 | | 5 | 8 | 10 | | 6 | 9 | 1 | 1-2 | | | | | | | |
| | | A | 8 | 0 | 3.0-9.0 | | 5 | 8 | 10 | 12 | 15 | 10 | 11 | 1.5 | 1-2 | | | | | | |
| | | A | 10 | 0 | 4.5-12.0 | | 5 | 8 | 10 | 12 | 15 | 12 | 13 | 2 | 1-3 | | | | | | |
| | | B | 10T | ±0.015 | 4.5-12.0 | | 5 | 8 | 10 | 12 | 15 | 18 | 13 | 2 | 1-3 | | | | | | |
| | | B | 12 | 0 | 9.0-13.0 | | 8 | 10 | 12 | 15 | 18 | 15 | 3 | 4 | | | | | | | |
| | | B | 16 | ±0.018 | 13.0-16.0 | | 10 | 12 | 15 | 18 | 20 | 18 | 19 | 4 | 5 | | | | | | |

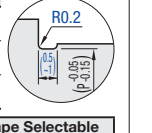
① W Dimension D6, D8: W=2 when P>5.0, D10, 10T: W=1 when P<5.0, W=2 when 5.0≤P≤7.0, W=3 when P>7.0 ① L dimension in () is not applicable to Diamond Shape and Dicoat® treatment.
① Angle A'30 is not applicable to Tip Shape B. Select from Standard Grade, Shouldered (P.1689). ① B Dimension 5 mm ~ will be selected for Dicoat® Treated / TiCN Treated items.

Set Screw

| Type | M | Material | H | Hardness | S | Surface Treatment |
|---------|---------|--------------------|---|---|---|---------------------|
| SELATA | Round | 4137 Alloy Steel | | Hardened 35~40HRC | | Hard Chrome Plating |
| SELATD | Diamond | Alloy Steel | | 35~40HRC | | |
| TSELATA | Round | SCM415 Alloy Steel | | Carburized 55HRC-(Depth: 0.7 - 0.8) Anti-carburizing on Threads | | Dicoat® Treated |
| TSELATD | Diamond | Steel (JIS) | | | | |

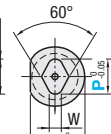
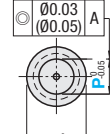
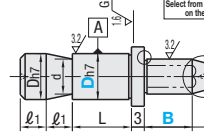
Reference: $\sin 15^\circ = 0.259$ $\sin 30^\circ = 0.5$ $\sin 45^\circ = 0.707$ $\sin 60^\circ = 0.866$ $\tan 15^\circ = 0.267$ $\tan 30^\circ = 0.577$ $\tan 45^\circ = 1$ $\tan 60^\circ = 1.732$

| Type | M | Material | H | Hardness | S | Surface Treatment |
|---------|---------|------------------|---|----------------------------|---|---------------------|
| R-SLATD | Round | 4137 Alloy Steel | | 35~40HRC (Surface 750HV ~) | | Hard Chrome Plating |
| R-SLATD | Diamond | 4137 Alloy Steel | | 35~40HRC | | |
| D-SLATD | Round | D2 Tool Steel | | 55HRC ~ (Surface 3000HV) | | Dicoat® Treated |
| D-SLATD | Diamond | D2 Tool Steel | | 55HRC ~ (Surface 3000HV) | | |
| H-SLATD | Round | D2 Tool Steel | | 55HRC ~ (Surface 3000HV) | | TiCN Treatment |
| H-SLATD | Diamond | D2 Tool Steel | | 55HRC ~ (Surface 3000HV) | | |



① Dicoat® Treated / TiCN Set Screw will have the () precision.

① Dicoat® Treated / TiCN Treated items will have the () precision.



$e = P/2 \tan 15^\circ + R - (R/\sin 15^\circ)$

① Dicoat® Treated / TiCN Treated items do not come with a center hole.

| Part Number | Type | Tip Shape | Dh7 | P | B | L Selection | | | | | | Unit Price | | | | | |
|-------------|------|-----------|-----|-------|---------|-------------|----|---|---|---|---|------------|--------|---------|---------|---------|---------|
| | | | | | | L | l1 | H | d | R | W | SELATA | SELATD | TSELATA | TSELATD | R-SLATD | R-SLATD |
| | | A | 6 | 0.012 | 3.0-7.0 | | 8 | 8 | 9 | 4 | 1 | M5 | 1-2 | | | | |