



For Pricing and Days to Ship, Please Configure Online.

Lead Screw Support Units - Round Fixed Side Radial Bearing Type

Listed Support Side Support Unit Sets are also available by adding -SET to part number of Fixed Side Support Units on P.684.

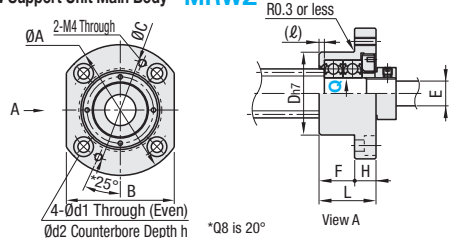
Lead Screw Support Unit Main Body



Support Unit Set	Type				Material					Surface Treatment	Accessories
	Support Unit Main Body	Support Unit Stop Plate Set	Compact Position Indicator Mount Set	Large Position Indicator Mount Set	1 Main Body	2 Stop Plate Set	3 Collar	4 Bearing Nut			
Not included	MRWZ	MRWZ-S	MRWZ-CP	MRWZ-LP	1045 Carbon Steel	1018 Carbon Steel	1018 Carbon Steel	1018 Carbon Steel	Black Oxide	Clamp Lever	
Included	MRWZ-SET	MRWZ-S-SET	MRWZ-CP-SET	MRWZ-LP-SET							

Uses two preload-adjusted JIS Class 0 Radial Bearings.

Lead Screw Support Unit Main Body MRWZ

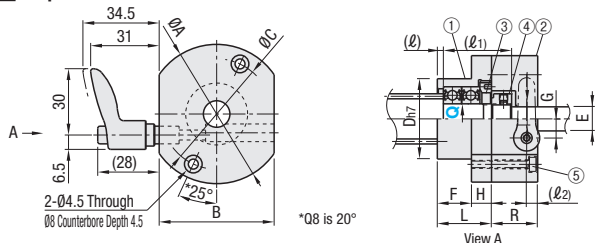


Number	Part Name	Quantity
1	Support Unit Main Body	1
2	Stop Plate Set	1
3	Collar	1
4	Bearing Nut (w/ Thread Protector)	1
5	Hex Socket Head Cap Screw	2

Stop Plate Set



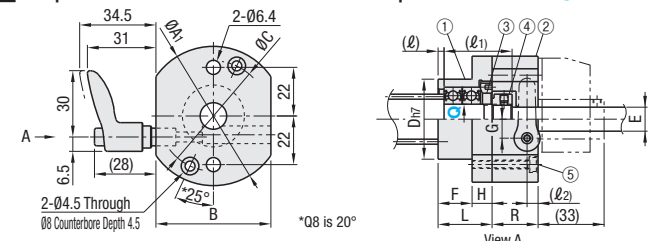
Stop Plate Set MRWZ-S



Compact Position Indicator Mount Set



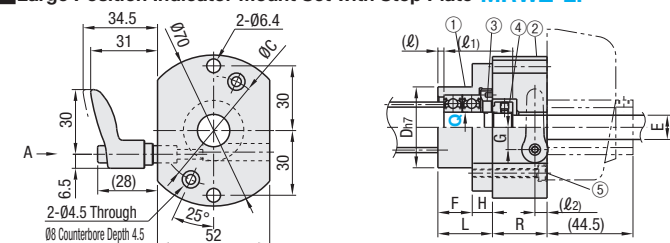
Compact Position Indicator Mount Set with Stop Plate MRWZ-CP



Large Position Indicator Mount Set



Large Position Indicator Mount Set with Stop Plate MRWZ-LP



A collar for the clamp lever is not included with Ø8. The clamp lever mounting dimensions will be the same as the Large Type.
Do not use without inserting the screw shaft (empty tightening). It may deform, causing it to be unusable.

Part Number	Type	Q	L	H	F	D	A	A ₁	C	B	d ₁	d ₂	h	R	(ℓ)	(ℓ ₁)	(ℓ ₂)	G	E	Bearing Nut	Clamp Lever	Bearing Type	Allowable Axial Load (N)
MRWZ (-SET)	8	22		14	28	45	53	35	35	3.4	6.5	4	17		25.7			6.5	6	BNR8	CLDFC4-7-M	608ZZCNM	1300
MRWZ-S (-SET)	10	24	8	16	34	52	54	42	42	4.5	8	4.5	18	2.3	29.2	5		7.5	8	BNR10		6000ZZCNM	2300
MRWZ-CP (-SET)	12				36	54	44	44	44									8.5	10	BNR12		6001ZZCNM	2600
MRWZ-LP (-SET)	15	27	10	17	40	63	63	50	52	5.5	9.5	5.5	20		34.2			9.5	12	BNR15		6002ZZCNM	2900

Ordering Example: Part Number MRWZ15 MRWZ-CP15-SET

Days to Ship: Configure Online

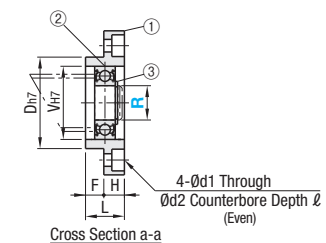
Price: Configure Online

Part Number	MRWZ	MRWZ-SET	MRWZ-S	MRWZ-S-SET	MRWZ-CP	MRWZ-CP-SET	MRWZ-LP	MRWZ-LP-SET
Type	Q	Unit Price	Unit Price	Unit Price	Unit Price	Unit Price	Unit Price	Unit Price
MRWZ (-SET)	8							
MRWZ-S (-SET)	10							
MRWZ-CP (-SET)	12							
MRWZ-LP (-SET)	15							

Lead Screw Support Units - Round Support Side



Type	Material	Surface Treatment
MRUZ	1045 Carbon Steel	Black Oxide



Number	Part Name	Quantity
1	Housing	1
2	Radial Bearing	1
3	Retaining Ring for Shaft (Included)	1

Part Number	Type	R	L	H	F	D	A	C	B	V	d ₁	d ₂	ℓ	Bearing Type	Retaining Ring for Shaft	MRUZ	
																Unit Price	Volume Discount Rate
		8	13	7	6	28	45	35	35	22	3.4	6.5	4	B608ZZ	NETW5	1-4 pc(s).	5-10 pcs.
		10	14	7	7	34	52	42	42	26	4.5	8	4.5	B6000ZZ	STWN10		
		12	15	8	7	36	54	44	44	28	4.5	8	4.5	B6001ZZ	STWN12		
		15	17	9	8	40	63	50	52	32	5.5	9.5	5.5	B6002ZZ	STWN15		

Ordering Example: Part Number MRUZ15

Days to Ship: Configure Online

Example

Stop Plate Set Type



Compact Position Indicator Mount Type

Stop Plate Sets with clamp lever on left side or right side can be mounted.

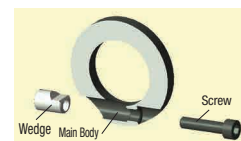


Large Position Indicator Mount Type



Position Indicators P.701

Features of Stop Plate Set, Wedge Mechanism
• The screw pulls the wedge up and fastens the shaft to require less torque to tighten.
• High performance and optimal for the case where frequent adjustment is required. Brass wedges cause less damage to shafts.



Easy Assembly Design Dimensions Table

Type	Lead Screw		Lead Screw Support Units				Position Indicator		
	Shaft Dia.	Pitch	Fixed Side		Support Side		Compact / Large		
	D	P	Type	Bearing I.D. Q	Type	Bearing I.D. R	Type	Spindle Pitch	Alterations
MTW(L/K) MTWB(L/K) RMTW(L/K) MTSW(L/K)	12	2	MRWZ MRWZ-S MRWZ-CP MRWZ-LP	MRUZ		8	D-----	2	-CSE6
	14	3				10		3	-CSE8
	16	3				12		3	-CSE10
	18	4				12		4	-CSE10
	20	4				15		4	-CSE12
22	5		5	-CSE12					
25	5		5	-CSE12					

*For Large Position Indicator, Spindle Pitch 2 cannot be selected.

Precaution for Use: Use the position indicators within maximum rotational speed. P.701, 702

Support Unit Mounting Procedure



- Insert the lead screw shaft into the fixed side support unit.
- After slipping a collar on, thread the included bearing nut on and temporarily tighten at 1/3 of the specified tightening torque. Mount the support side unit on the support end of the shaft and mount.
- While rotating the screw shaft, gradually tighten the bearing nut to obtain smooth motion from end to end.
- When smooth motion is obtained, tighten to full tightening torque to finish.

M	Nut Tightening Torque (N-cm)	Part Number
8	490	BNR8
10	930	BNR10
12	1370	BNR12
15	2350	BNR15

Value is for reference only.