

Strut Clamps -Arm-

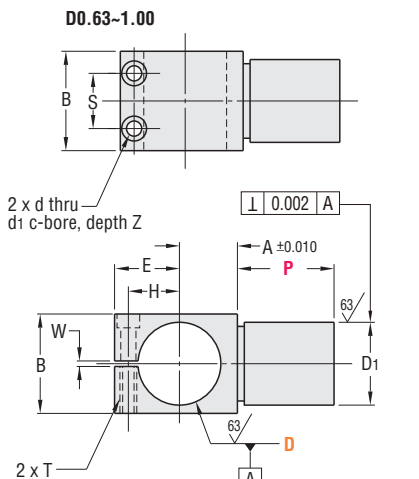
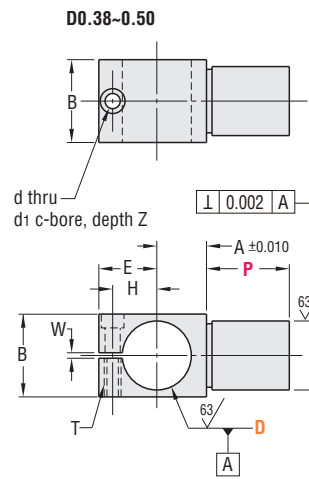


The Arm Clamps can be combined with other Strut Clamps in this section to provide variable angle mounting of rounds and devices.



Material	Surface Treatment	Included Hardware	Type
1018 Steel	Black Oxide	S.H.C.S.	U-KLKA
	Electroless Nickel Plating		U-MKA
6061-T6 Aluminum	Clear Anodizing		U-ALWK
	Black Anodizing		U-ALKA
304 Stainless Steel	-		U-SLKA

Material Characteristics P.628, 629



General Tolerance
Unless otherwise specified use the table below.

From	To	Tolerance
0.000	5.000	±0.01
5.001	16.000	±0.02
16.001	60.000	±0.05

Thread or hole location tolerance: ±0.005 non-cumulative.

When "P" is 2.00 and 2.50, the center-drilled hole may remain on "D1" end.

Surface Roughness: Unless otherwise specified

Type	Part No.			P Selection					D1		T (Thread)				d	d1	Z	S	W				
	D			1/2	3/4	1"	1-1/2"	2"	2-1/2"	Nominal	Tolerance	A	B	E						H	Size	Major Dia.	
	Callout	Nominal	Tolerance																				
U-KLKA U-MKA U-ALWK U-ALKA U-SLKA	0.38	3/8	0.3756	0.3750	0.50	1.00				3/8	0.3748	0.3744	0.375	0.563	0.531	0.344	#8-32	0.164	0.180	0.313	0.180	-	0.078
	0.50	1/2	0.5007	0.5000	0.75	1.00				1/2	0.4998	0.4994	0.438	0.625	0.594	0.406	#8-32	0.164	0.180	0.313	0.180	-	0.078
	0.63	5/8	0.6257	0.6250	0.75	1.50				5/8	0.6248	0.6244	0.500	0.813	0.625	0.438	#8-32	0.164	0.180	0.313	0.180	0.438	0.078
	0.75	3/4	0.7508	0.7500	1.00	2.00				3/4	0.7497	0.7492	0.625	0.938	0.781	0.563	#10-32	0.190	0.206	0.375	0.206	0.500	0.078
	1.00	1"	1.0008	1.0000	1.50	2.50				1"	0.9997	0.9992	0.750	1.188	0.875	0.656	#10-32	0.190	0.206	0.375	0.206	0.625	0.078

Order Example The part number consists only of the fields with blue characters.

Part No. — P

Type D

U-MKA 1.00 — P 2.50

D tolerance is verified before the slit machining process. Due to possible internal spring force this product may require higher clamping torque.



Days to Ship 1 Day



Price

Quantity Discount Rate

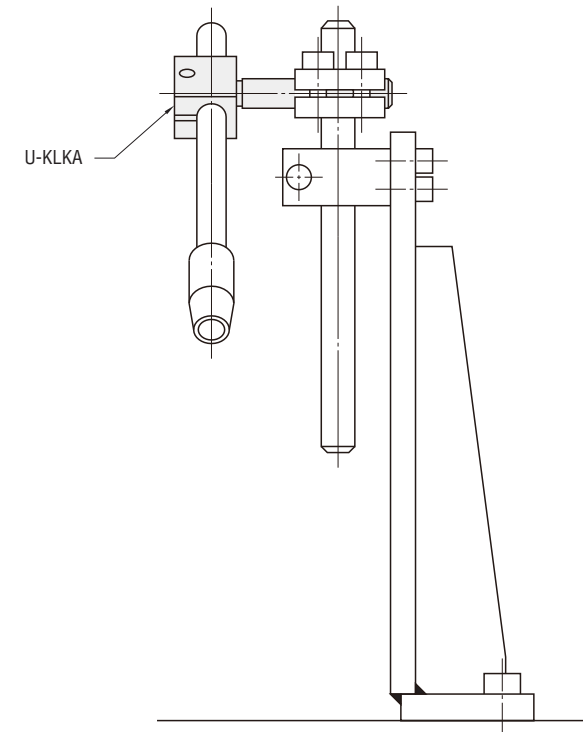
Quantity	1	2-4	5-19	20~
Rate	—	2%	3%	5%

For larger quantity orders "Days to Ship" may differ from published catalog term. P.29

D	\$ Unit Price				
	U-KLKA	U-MKA	U-ALWK	U-ALKA	U-SLKA
0.38	18.60	20.50	20.50	20.50	28.10
0.50	21.80	24.20	24.20	24.20	33.00
0.63	25.90	28.80	28.80	28.80	39.20
0.75	31.20	34.60	34.60	34.60	47.00
1.00	37.80	41.90	41.90	41.90	68.30



Example



- Contents
- How to Use the Catalog
- Linear Motion
- Linear Shafts
- Bushings
- Shaft Supports
- Shaft Collars
- Linear Guides
- Rotary Motion
- Rotary Shafts
- Bearings w/ Housings
- Pulleys
- Belts
- Couplings
- Locating Components
- Locating Pins & Bushings
- Locating Components
- General Components
- Pivot Pins
- Floating Joints
- Posts
- Device Stands
- Strut Clamps
- Angle Plates
- Gussets
- Welded Stands
- Washers
- Collars
- Manifolds
- Urethanes
- Rubbers
- Plates
- Misc.
- Technical Data
- Business Information
- Index



Device Stands P.441



Struts P.451



Strut Clamps P.457



Express Options P.30



MiSUMI www.misumiusa.com E-mail: inquire@misumiusa.com