

Shaft Supports – "L" Shape–



The "L" Shape Shaft Supports are available in nickel plated carbon steel, 304 stainless steel and clear anodized aluminum. It is a compact design and you can choose from various shaft sizes and a variety of mounting heights.



□: New Price

Slit



General Tolerance
Unless otherwise specified use the table below.

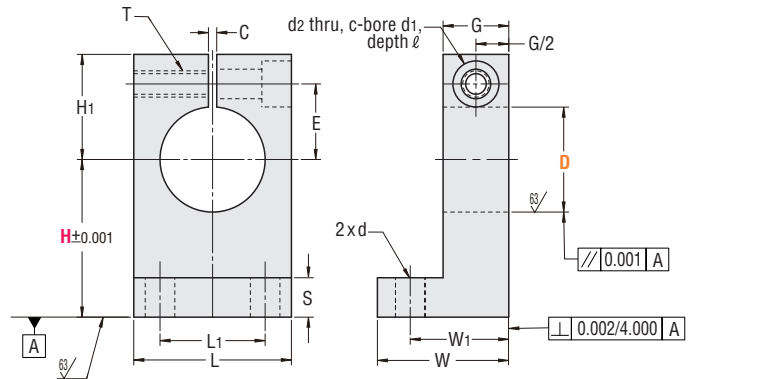
From	To	Tolerance
0.000	5.000	±0.01
5.001	16.000	±0.02
16.001	60.000	±0.05

⊕ Thread or hole location tolerance: ±0.005* non-cumulative.

Material	Surface Treatment	Included Hardware & Material	Type
1045 Steel	Electroless Nickel Plating	Stainless Steel S.H.C.S. (1 Piece)	U-SHKSM
304 Stainless Steel	-		U-SHKSS
6061-T6 Aluminum	Clear Anodizing		U-SHKSA

⊕ Material Characteristics P.628, 629

⊕ The slit is manufactured after the hole D is bored at indicated tolerance. The tolerance may vary slightly depending on the machining condition.



⊕ Surface Roughness: Unless otherwise specified

Type	Part No.			Selection (Callout)								\$ Unit Price (Qty. 1-4)		
	Callout	Nominal	Tolerance	1/2	3/4	1"	1-1/4	1-1/2	1-3/4	2"	2-1/2	U-SHKSM	U-SHKSS	U-SHKSA
U-SHKSM U-SHKSS U-SHKSA	0.25	1/4	0.2506 0.2500	0.50	0.75							23.40	32.60	20.40
	0.38	3/8	0.3756 0.3750		0.75	1.00						25.30	47.90	23.00
	0.50	1/2	0.5007 0.5000		0.75	1.00						29.10	49.40	26.30
	0.63	5/8	0.6257 0.6250			1.00	1.25					36.10	50.50	33.10
	0.75	3/4	0.7508 0.7500				1.25	1.50				38.90	72.00	36.00
	1.00	1"	1.0008 1.0000					1.50	1.75			45.40	73.60	41.80
	1.50	1-1/2	1.5010 1.5000						2.00	2.50		59.40	117.50	53.10

Order Example

Part No. — **H**

Type **D**

U-SHKSM 0.50 — H 1.00

Technical Information

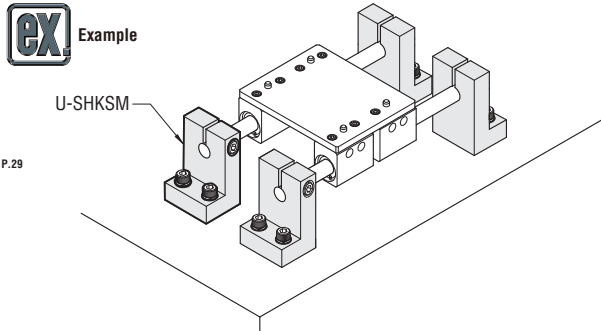
Callout	H			D	L	H1	G	S	W	W1	L1	d		E	T (Thread)			d2	d1	ℓ	C
	Nominal	Actual	Compatible Bolt									Size	Major Dia.								
	0.50	1/2	0.500																		
0.75	3/4	0.750										#6	0.344	#6-32	0.138	0.154	0.281	0.154	0.079		
1.00	1"	1.000										#8	0.391	#8-32	0.164	0.180	0.313	0.180	0.079		
1.25	1-1/4	1.250										#10	0.438	#10-32	0.190	0.206	0.375	0.206	0.079		
1.50	1-1/2	1.500										#10	0.531	#10-32	0.190	0.206	0.375	0.206	0.079		
1.75	1-3/4	1.750										1/4	0.719	1/4-20	0.250	0.281	0.438	0.281	0.079		
2.00	2"	2.000										5/16	1.063	5/16-18	0.313	0.344	0.531	0.344	0.118		

Days to Ship **1** Day

Price

Quantity	1-4	5-19	20-49	50-
Rate	—	2%	3%	5%

⊕ For larger quantity orders "Days to Ship" may differ from published catalog term. P.29



Side Slit



General Tolerance
Unless otherwise specified use the table below.

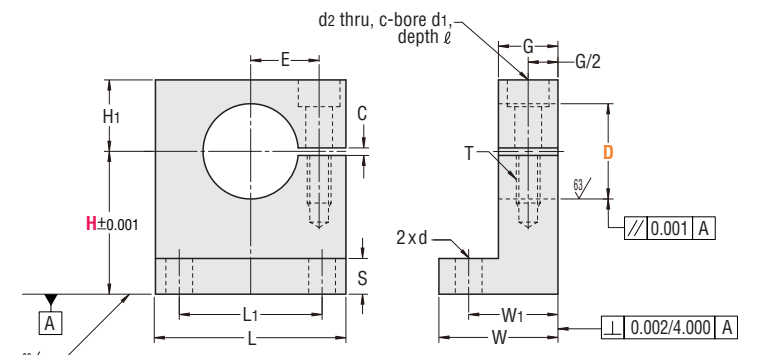
From	To	Tolerance
0.000	5.000	±0.01
5.001	16.000	±0.02
16.001	60.000	±0.05

⊕ Thread or hole location tolerance: ±0.005* non-cumulative.

Material	Surface Treatment	Included Hardware & Material	Type
1045 Steel	Electroless Nickel Plating	Stainless Steel S.H.C.S. (1 Piece)	U-SHKWM
304 Stainless Steel	-		U-SHKWS

⊕ Material Characteristics P.628, 629

⊕ The slit is manufactured after the hole D is bored at indicated tolerance. The tolerance may vary slightly depending on the machining condition.



⊕ Surface Roughness: Unless otherwise specified

Type	Part No.			Selection (Callout)								\$ Unit Price (Qty. 1-4)	
	Callout	Nominal	Tolerance	3/4	1"	1-1/4	1-1/2	1-3/4	2"	2-1/2	U-SHKWM	U-SHKWS	
U-SHKWM U-SHKWS	0.38	3/8	0.3756 0.3750	0.75	1.00						24.20	45.70	
	0.50	1/2	0.5007 0.5000	0.75	1.00						27.10	51.40	
	0.63	5/8	0.6257 0.6250		1.00	1.25					31.10	52.70	
	0.75	3/4	0.7508 0.7500			1.25	1.50				39.20	72.50	
	1.00	1"	1.0008 1.0000				1.50	1.75			45.00	79.40	
	1.50	1-1/2	1.5010 1.5000						2.00	2.50	61.60	123.20	

Order Example

Part No. — **H**

Type **D**

U-SHKWM 0.50 — H 1.00

Technical Information

Callout	H			D	L	H1	G	S	W	W1	L1	d		E	T (Thread)			d2	d1	ℓ	C
	Nominal	Actual	Compatible Bolt									Size	Major Dia.								
	0.75	3/4	0.750																		
1.00	1"	1.000										#8	0.391	#8-32	0.164	0.328	0.180	0.313	0.180	0.079	
1.25	1-1/4	1.250										#10	0.438	#10-32	0.190	0.380	0.206	0.375	0.206	0.079	
1.50	1-1/2	1.500										#10	0.531	#10-32	0.190	0.380	0.206	0.375	0.206	0.079	
1.75	1-3/4	1.750										1/4	0.719	1/4-20	0.250	0.500	0.281	0.438	0.281	0.079	
2.00	2"	2.000										5/16	1.063	5/16-18	0.313	0.626	0.344	0.531	0.344	0.118	

Days to Ship **1** Day

Price

Quantity	1-4	5-19	20-49	50-
Rate	—	2%	3%	5%

⊕ For larger quantity orders "Days to Ship" may differ from published catalog term. P.29

- Contents
- How to Use the Catalog
- Linear Motion
- Linear Shafts
- Bushings
- Shaft Supports
- Shaft Collars
- Linear Guides
- Rotary Motion
- Rotary Shafts
- Bearings w/ Housings
- Pulleys Belts Couplings
- Locating Components
- Locating Pins & Bushings
- Locating Components
- General Components
- Pivot Pins Floating Joints
- Posts Device Stands Strut Clamps
- Angle Plates Gaskets Welded Stands
- Washers Collars
- Manifolds
- Urethanes Rubbers
- Plates
- Misc.
- Technical Data
- Business Information
- Index