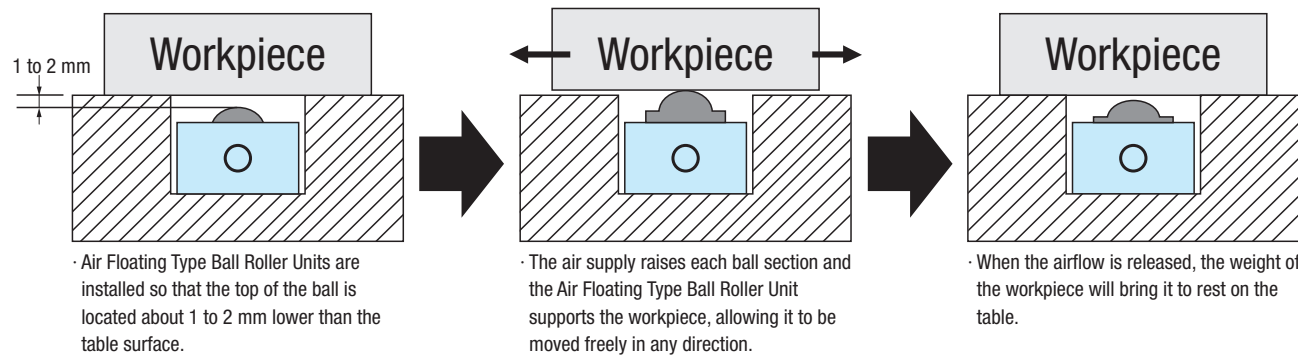
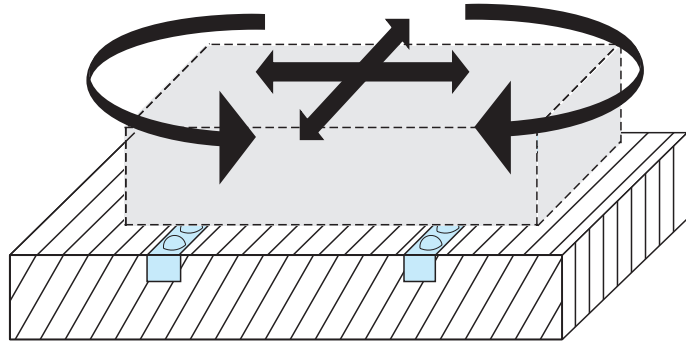




Air Floating Type Ball Roller Unit Overview Hole

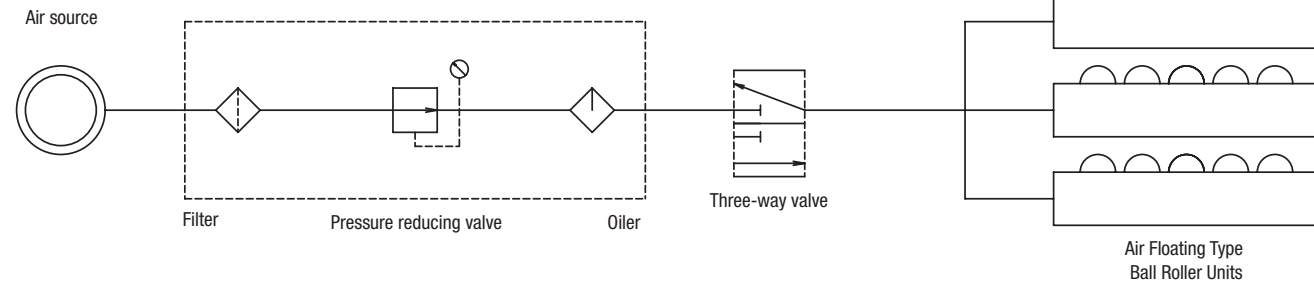
Air Floating Type Ball Roller Unit Operating Principle and Recommended Circuit

The Air Floating Type Ball Roller Unit is a **labor-saving** device that has a built-in air cylinder to lift the workpiece off the table, **allowing it to be moved freely through 360° of motion.**

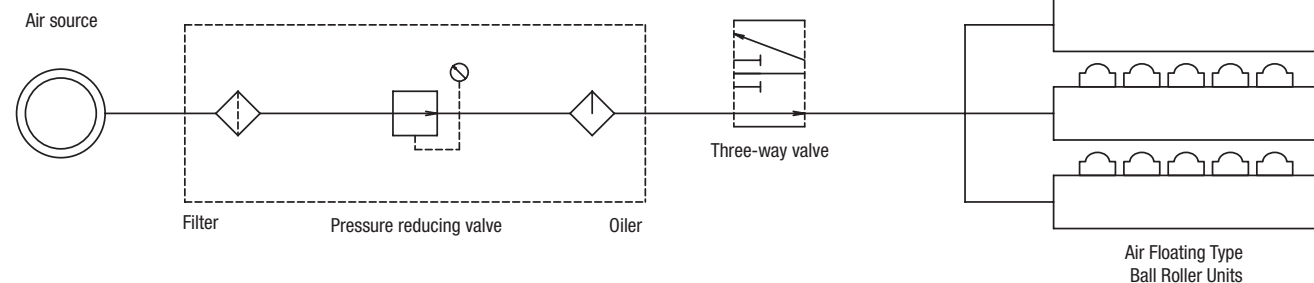


Recommended Circuit
Workpieces are lifted using air pressure and lowered using their own weight.
The air in the cylinder must therefore be released when lowering, so please use a three-way valve.

Under Normal Conditions



With Air Supply



Ball Roller Units (Upward-Facing) Air Floating Type Unit / Unit with Waste Discharge Hole

Features: The built-in air cylinder lifts the conveyed object off of the table surface, allowing it to be moved and positioned freely through 360° of motion.

Air Floating Type Unit

RoHS 10

BCA30
(For all orientations)

4-Ø6.5 through, Ø11 counterbore depth 6
Overall length - 25

Under Normal Conditions With Air Supply

Material				
Ball Rollers				
Main Body	Main Ball	Cover	Sub Ball	Frame
JIS SCM415	S2100 Bearing Steel	Steel	S2100 Bearing Steel	6063 Aluminum Alloy

Ⓜ BCA30 can be used in both vertical and horizontal orientations.
Ⓜ The recommended working pressure range is 0.4 MPa to 0.6 MPa.
Ⓜ The ball rollers cannot be replaced.

Part Number Type	No.	Overall Length	Number of Rollers	Mounting Orientation	Waste Discharge Hole	At 0.4 MPa	At 0.5 MPa	At 0.6 MPa
						Lift Capacity N (kgf)	Lift Capacity N (kgf)	Lift Capacity N (kgf)
BCA30	5	290	5	All orientations	None	*294 (30)	*382 (39)	*470 (48)
	10	540	10					
	15	790	15					

*Lift capacity per ball roller

Part Number Example **Part Number**
BCA30-5

Features: Includes a waste discharge hole that allows any debris inside to be discharged.

Unit with Waste Discharge Hole

RoHS 10

BCUU (Upward-Facing)

Overall Length

Material				
Ball Rollers				
Main Body	Main Ball	Cover	Sub Ball	Frame
S304 Stainless Steel	JIS SWRM8	Steel	JIS SWRM8	Low Carbon Steel

Part Number Type	No.	Overall Length	Number of Rollers	Number of Mounting Holes	F	Mounting Orientation	Waste Discharge Hole	Ball Roller Used	Load Capacity
									N (kgf)
BCUU	6	600	6	6	100	Upward-Facing	Bottom	BCUH50	*490 (50)
	9	900	9	10	50				
	12	1200	12	12	100				
	18	1800	18	18					

*Load capacity per ball roller

Part Number Example **Part Number**
BCUU6