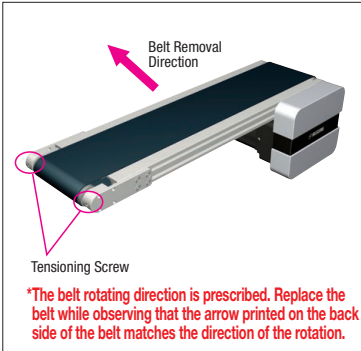


Belt Replacement Procedure

Belt Replacement ~End Drive~



Applicable P/N: SVKA, SVKB

STEP 1

Place a mark to note the existing tension condition. Do the same for the other side.



STEP 2

Slightly loosen 4 pulley holder mounting screws. (Take caution that the pulley may fall off if the screws are completely loosened.) Do the same for the other side.



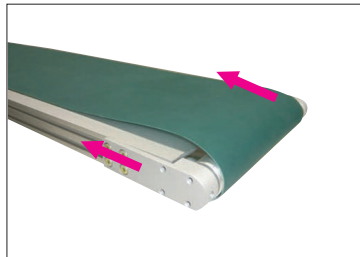
STEP 3

Loosen the tensioning screws and completely remove. Do the same for the other side.



STEP 4

Push both pulley holders towards the main body.



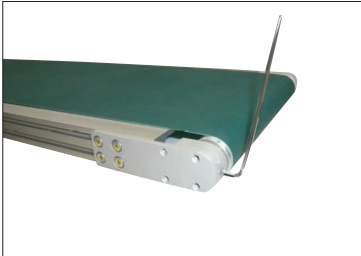
STEP 5

Confirm the belt rotation direction and replace the belt.



STEP 6

Tighten the tensioning screws (2 on both sides) to the position marked in Step 1 to adjust the tension. Perform this adjustment while checking for the parallelism between the pulley holder and the aluminum frame extrusion.



STEP 7

Completely tighten 4 pulley holder screws. Tighten the 4 screws on the other side completely to complete.



Belt Lateral Movement Adjustment ~End Drive~

Applicable P/N: CVSA, CVSB, SVKA, SVKB (CVSA in photo)

For SVKA, SVKB, tensioning screws are located on the end of pulley holder.

STEP 1

While the belt is laterally moving to one side, start the conveyor. The lateral movement adjustment is done with the tensioning screw on the side the belt is deviated to.



STEP 2

First, loosen a nut on the tensioning screw, and gradually tighten the tension screw. If tighten excessively the unit will creep to the opposite side, if this happens, loose the nut.



STEP 3

Lateral movement will gradually disappear. Re-tighten the screws to complete. The belt will come to a stable state by leaving the conveyor in operation for awhile after the adjustment.

